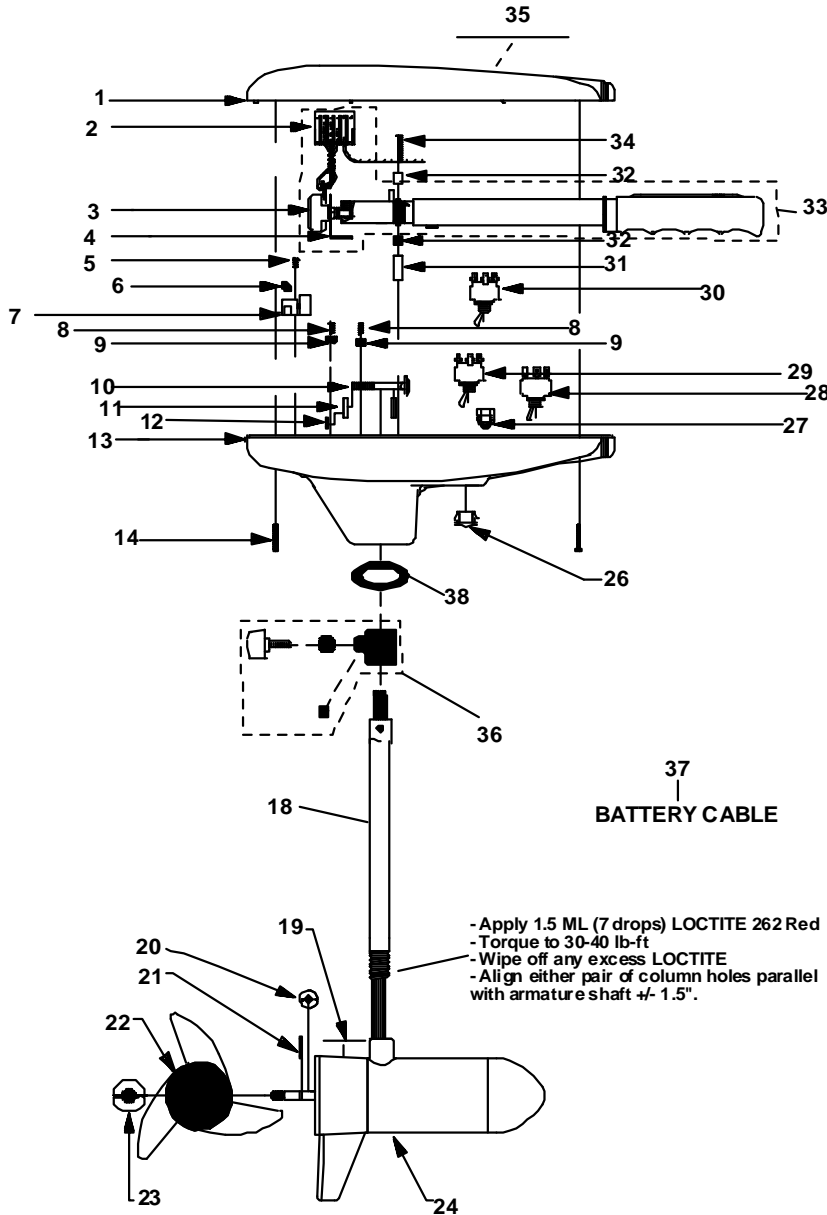


MotorGuide REPAIR PARTS

Model: **POWERplus**
T75V



SPECIFICATIONS:

| | |
|---------------|--------------|
| Year of Intro | 1998 |
| Thrust | 75LBS |
| Volts | 24/36VDC |
| Amp Draw | 0 to 29 amps |
| Mount | 20 Bow |
| Speeds | Variable |

QUICK REFERENCE PARTS GUIDE:

| | |
|----------------|----------|
| Voltage Switch | FP153-04 |
| FOR/REV Switch | FP153-06 |
| DA Board | AF157-01 |
| MOSFET | JF096-07 |
| Motor Seal Kit | 6220 |

PARTS ORDERING & TECH ASSISTANCE

MotorGuide Consumer Relations
 Phone 918-831-6989
 Fax 800-982-8093

Send Returned Goods to:

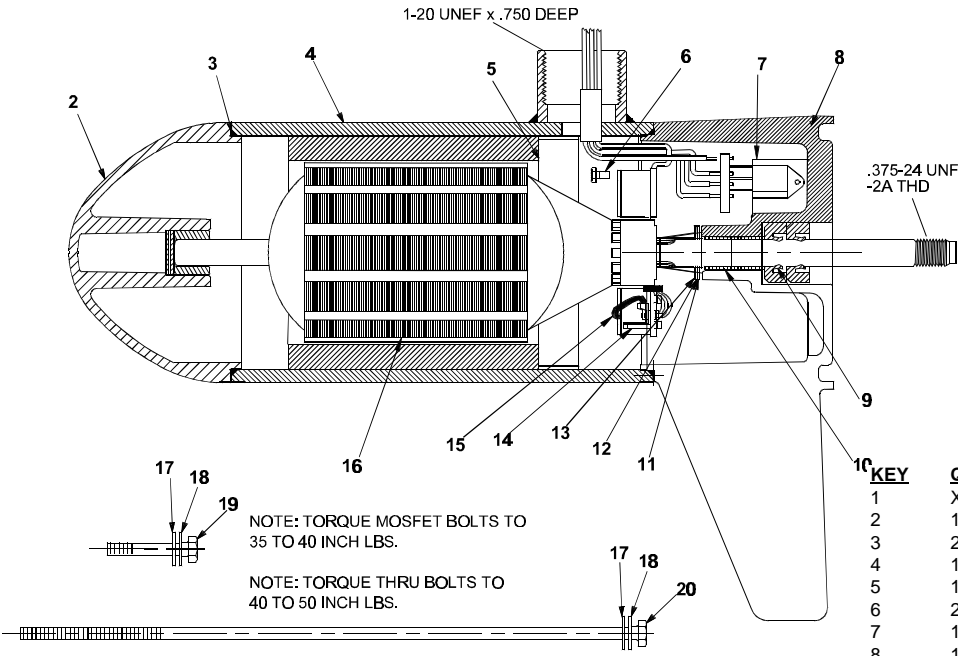
MotorGuide
 605 Hwy 12 West
 Starkville, MS 39760

Returned Goods must be accompanied with a Returned Goods Authorization. Contact MotorGuide Consumer Relations to obtain RGA.

| KEY | DESCRIPTION | PART # | KEY | DESCRIPTION | PART # |
|-----|---------------------------|----------|-----|----------------------------|----------|
| 1 | TOP HOUSING COVER BLACK | AT053-10 | 26 | HOLE PLUG | FP021-03 |
| 2 | AMP CONNECTOR | AP029-01 | 27 | GROMMET | GR019-03 |
| 3 | POTENTIOMETER | AP168-02 | 28 | TOGGLE SWITCH 3 POSITIONS | FP153-05 |
| 4 | POT BRACKET | AT155-03 | 29 | FWD/REV SWITCH 2 POSITIONS | FP153-06 |
| 5 | SELF TAPPING SCREW | AF141-01 | 30 | TOGGLE SWITCH 2 POSITIONS | FP153-04 |
| 6 | INSULATING SLEEVE | AT080-01 | 31 | WIRE BRACKET | AT155-04 |
| 7 | 36 VOLT DURA AMP BOARD | AF157-01 | 32 | RETAINER CLAMP | AR036-01 |
| 8 | #10 X 1/2" SCREW | GR133-01 | 33 | HANDLE ASY | AT372-03 |
| 9 | TERMINAL BLOCK | FT160-01 | 34 | 8 X 1-3/8 SCREW | AR133-01 |
| 10 | BOLT | TT134-01 | 35 | NOMENCLATURE | AT056-15 |
| 11 | CURVED WASHER | TT171-04 | 36 | DEPTH COLLAR ASY | AR158-01 |
| 12 | NYLON LOCK NUT | XT098-02 | 37 | BATTERY CABLE | AT328-02 |
| 13 | T/H BASE BLACK | AR004-14 | 38 | COLUMN SEAL | AT079-01 |
| 14 | SCREW #8 X 1" | LF141-04 | | | |
| 15 | BAR KNOB DEPTH ADJUSTMENT | AR082-02 | | | |
| 16 | COLUMN CLAMP WASHER | AR171-01 | | | |
| 17 | COLUMN SUPPORT NUT | FR098-01 | | | |
| 18 | COLUMN 42" | FR049-15 | | | |
| | COLUMN 50" | FR049-13 | | | |
| 19 | LOWER UNIT DECAL | ET060-04 | | | |
| 20 | MONOFILAMENT WASHER | AR175-01 | | | |
| 21 | PROP DRIVE PIN | BR102-01 | | | |
| 22 | PROP/2 BLADE | AF124-07 | | | |
| 23 | PROP NUT | AR099-01 | | | |
| 24 | H/O MOTOR | AF397-14 | | | |
| 25 | DEPTH ADJUSTMENT COLLAR | AR051-01 | | | |

LOWER UNIT BREAKDOWN

Model:
T75V



DIRECTION OF ROTATION IS COUNTER CLOCKWISE WHEN VIEWED FROM PROPELLER END WITH RED POSITIVE & BLACK NEGATIVE.

| KEY | QTY | DESCRIPTION | PART NO. |
|-----|-----|-----------------------|-----------|
| 1 | X | MOTOR | AF397-14 |
| 2 | 1 | NOSE CAP | JF3212-01 |
| 3 | 2 | O RING SEAL | MR217-01 |
| 4 | 1 | HOUSING ASY | AF3210-06 |
| 5 | 1 | RETAINER | JF233-01 |
| 6 | 2 | BRUSH CARD SCREW | MR228-01 |
| 7 | 1 | DURA AMP MODULE | JF096-07 |
| 8 | 1 | COMM CAP | UF3205-01 |
| 9 | 2 | SHAFT SEAL | MR223-01 |
| 10 | 1 | BEARING | MR206-01 |
| 11 | 1 | NYLATRON WASHER | MR226-01 |
| 12 | 1 | WASHER | MR227-01 |
| 13 | 1 | E RING | MR219-02 |
| 14 | 2 | BRUSH SPRINGS | MR214-02 |
| 15 | 1 | BRUSH ASY LESS SPRING | AF3201-04 |
| 16 | 1 | ARMATURE 3.5" | AF3207-03 |
| 17 | 4 | STATIC SEAL | MR222-01 |
| 18 | 4 | THRU BOLT WASHER | MR216-01 |
| 19 | 2 | DURA AMP SCREW | MR229-04 |
| 20 | 2 | THRU BOLT | MR218-11 |

WIRING

36V/24V D.A. WIRING DIAGRAM

