

L43RF AG43RF

SPECIFICATIONS:

Year of Intro	1998
Thrust	43LBS
Volts	12VDC
Amp Draw	0 to 48 amps
Mount	01 Bow
Speeds	Variable

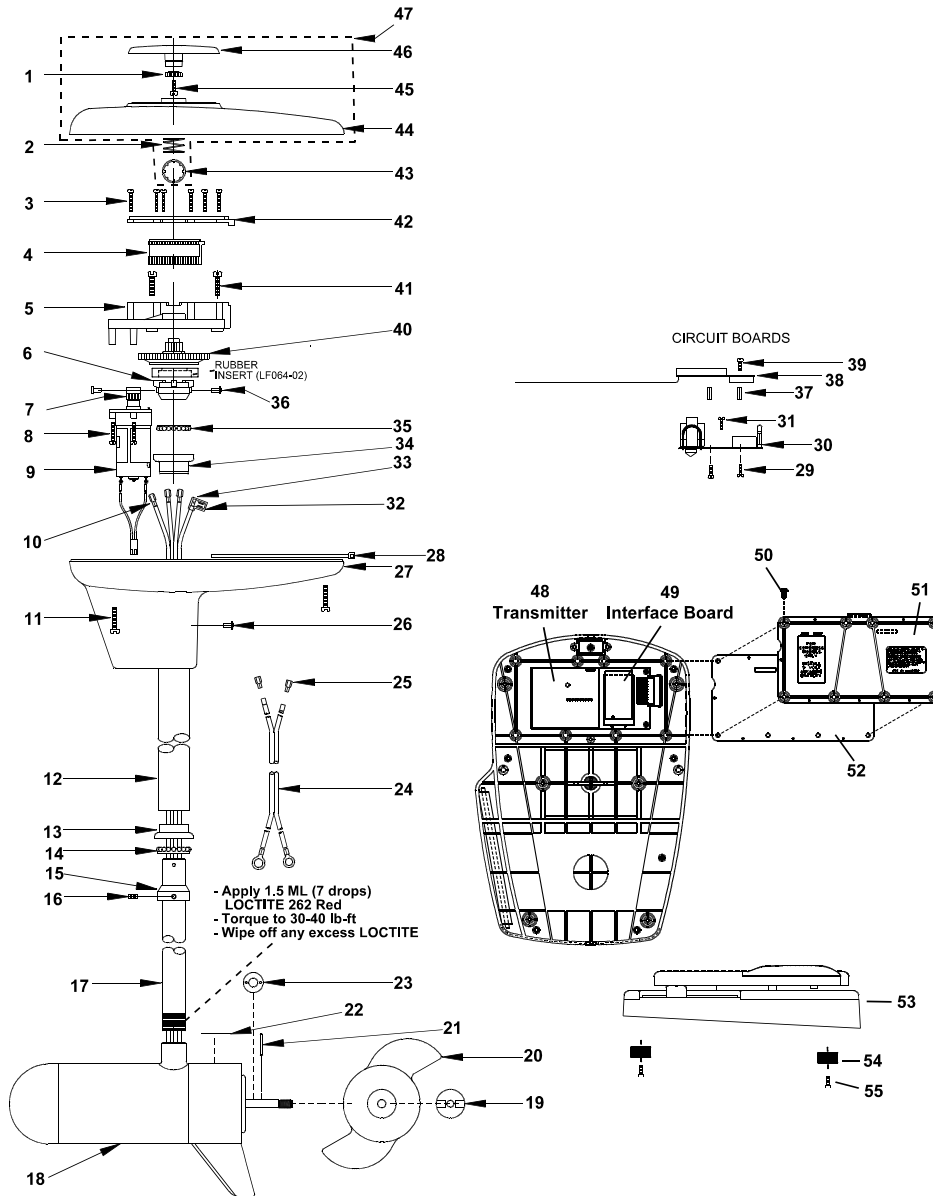
QUICK REFERENCE PARTS GUIDE:

MOSFET	JF096-08
Motor Seal Kit	6220
Transmitter	NP169-02

PARTS ORDERING & TECH ASSISTANCE

MotorGuide Consumer Relations
Phone 918-831-6989
Fax 800-982-8093

Returned Goods must be accompanied with a Returned Goods Authorization. Contact MotorGuide Consumer Relations to obtain RGA.



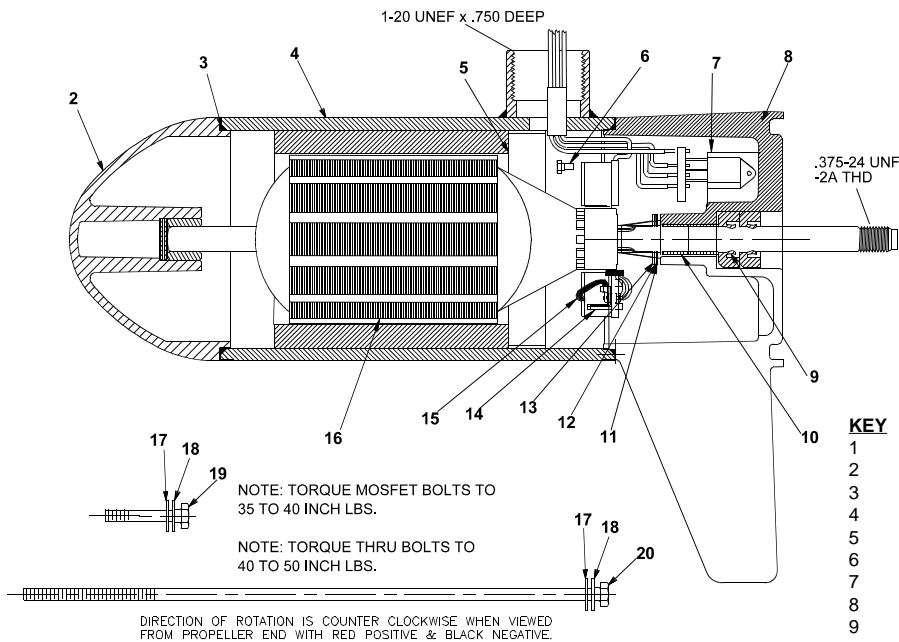
KEY#	PART#	DESCRIPTION	KEY#	PART#	DESCRIPTION	KEY#	PART#	DESCRIPTION
1	LF069-04	LAZER GEAR/INDICATOR	21	BR102-01	PROP DRIVE PIN	46	LF078-09	LAZER INDICATOR
2	LF014-01	SPRING/INDICATOR	22	LF060-04	LOWER UNIT DECAL LAZER	47	LF053-29	LAZER II GENERIC T/H COVER
3	LF141-02	SCREW #4 X 7/8	23	RK171-01	NYLON WASHER .125" THICK	48	NP169-02	AUTOGUIDE GENERIC T/H COVER
4	LF125-01	RACK	24	LF328-01	BATTERY CABLE ASY	49	NP157-03	TRANSMITTER
5	LF126-01	RACK GUIDE	25	PM160-01	TERMINAL	50	NP157-05	LAZER II INTERFACE BD RF
6	LF064-01	COLUMN COUPLER	26	LF111-02	POP RIVET .126-.187 D6	51	NP079-02	AUTOGUIDE INTERFACE BOARD
7	LF068-03	PINION GEAR	27	LF004-03	T/H BASE	52	XF141-06	#6X32X7/16 SCREW
8	LF141-02	SCREW #4 X 7/8	28	AF030-01	CABLE TIE	53	NP012-01	LAZER II BATTERY DOOR
9	LF3126-01	DRIVE MOTOR ASSY 12V	29	AF141-01	SCREW, SELF TAPPING	54	NP300-09	LAZER II DOOR GASKET
10	PM160-01	TERMINAL	30	LF157-01	LAZER II 12V ES/RF BOARD	55	NP300-14	AUTOGUIDE RF PEDAL ASY
11	LF141-04	SCREW #8 X 1"	31	LF157-06	AUTOGUIDE 12V ES/RF BOARD		XP023-01	LAZER II PEDAL ASY
12	AF165-06	(46") OUTER TUBE	32	AF141-01	SELF TAPPING SCREW		XF135-01	AUTOGUIDE RF PEDAL ASY
13	AF007-01	RETAINER/BEARING CUP	33	AF161-03	20-14 FLAG TERMI/STRIP G2			FOOT PEDAL PADS
14	AF005-01	BEARING	34	AT080-01	INSULATING SLEEVE			SCREW, PAD
15	AF006-01	RETAINER/BEARING	35	FM007-01	BEARING CUP			
16	AF143-01	SET SCREW	36	FM005-01	BALL BEARING			
17	LF049-03	36" SS COLUMN	37	LF111-01	POP RIVET .376-.500 D6			
18	LF049-04	42" SS COLUMN	38	LF102-03	STANDOFF			
19	LF049-05	50" SS COLUMN	39	LF170-01	RECEIVER			
20	LF049-08	54" SS COLUMN	40	IR133-01	SELF TAPPING SCREW			
21	LF049-09	60" SS COLUMN	41	LF069-08	COLUMN GEAR/POWDER MET			
22	KF397-04	43# F/O MOTOR	42	LF141-03	SCREW #8X3/4			
23	AR099-01	PROP NUT	43	LF127-01	RACK GUIDE COVER			
24	AF124-10	3.5 NINJA 3 BLADE PROP	44	LF098-01	TINNERMAN CLIP			
25			45	LF053-29	LAZER II GENERIC T/H COVER			
26				LF053-31	AUTOGUIDE GENERIC T/H COVER			
27				LF141-06	SCREW #6X1/2 PLASTIC			
28								
29								
30								
31								
32								
33								
34								
35								
36								
37								
38								
39								
40								
41								
42								
43								
44								
45								
46								
47								
48								
49								
50								
51								
52								
53								
54								
55								

PARTS NOT ILLUSTRATED

LF078-02	RAISED SECONDARY INDICATOR
LF141-01	SCREW, SECONDARY INDICATOR
LF057-01	INDICATOR DECAL
LF056-22	L43RF TOP HOUSING DECAL
LF056-29	AG43RF TOP HOUSING DECAL

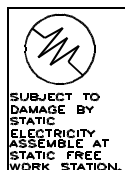
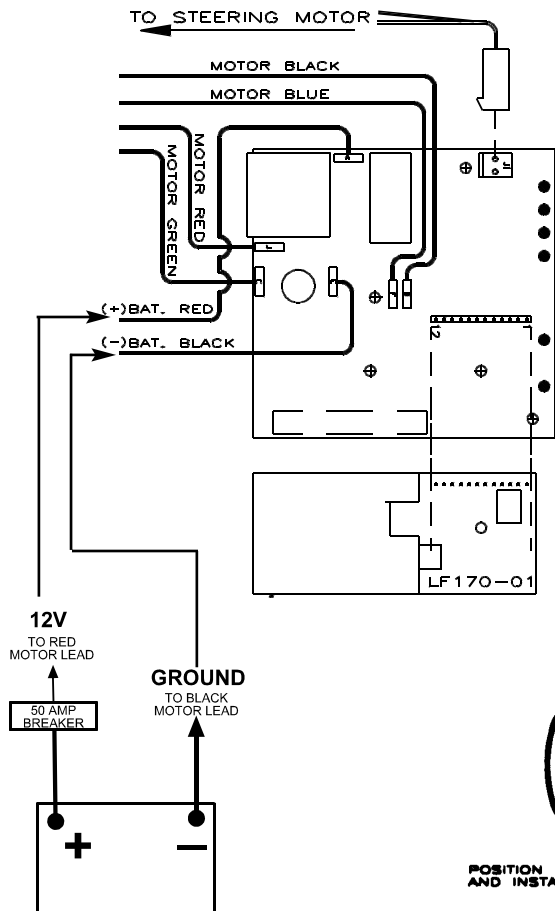
LOWER UNIT BREAKDOWN

Models:
L43RF
AG43RF



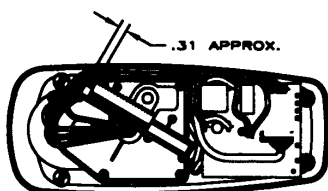
KEY	QTY	DESCRIPTION	PART NO.
1	X	MOTOR	KF397-04
2	1	NOSE CAP	JF3212-02
3	2	O RING SEAL	MR217-01
4	1	HOUSING ASY	KF3210-01
5	1	RETAINER	JF233-01
6	2	BRUSH CARD SCREW	MR228-01
7	1	DURA AMP MODULE	JF096-08
8	1	COMM CAP	JF3205-04
9	2	SHAFT SEAL	MR223-01
10	1	BEARING	MR206-01
11	1	NYLATRON WASHER	MR226-01
12	1	WASHER	MR227-01
13	1	E RING	MR219-01
14	2	BRUSH SPRINGS	MR214-02
15	1	BRUSH ASY LESS SPRING	JF3201-05
16	1	ARMATURE	KF3207-01
17	4	STATIC SEAL	MR22-01
18	4	THRU BOLT WASHER	MR216-01
19	2	DURA AMP SCREW	MR229-02
20	2	THRU BOLT	MR218-01

WIRING



Lubricate wire exiting pinion with non washout grease and bend wires flat to clear indicator gear teeth.

Battery cable leads to be bent at 90 degrees. Leads must be at or below top of Control electronics board.



RACK INSTALLATION
POSITION MOTOR IN LINE WITH TOP HOUSING (SEE BELOW) AND INSTALL RACK APPROX. 5/16 FROM END OF TRAVEL

