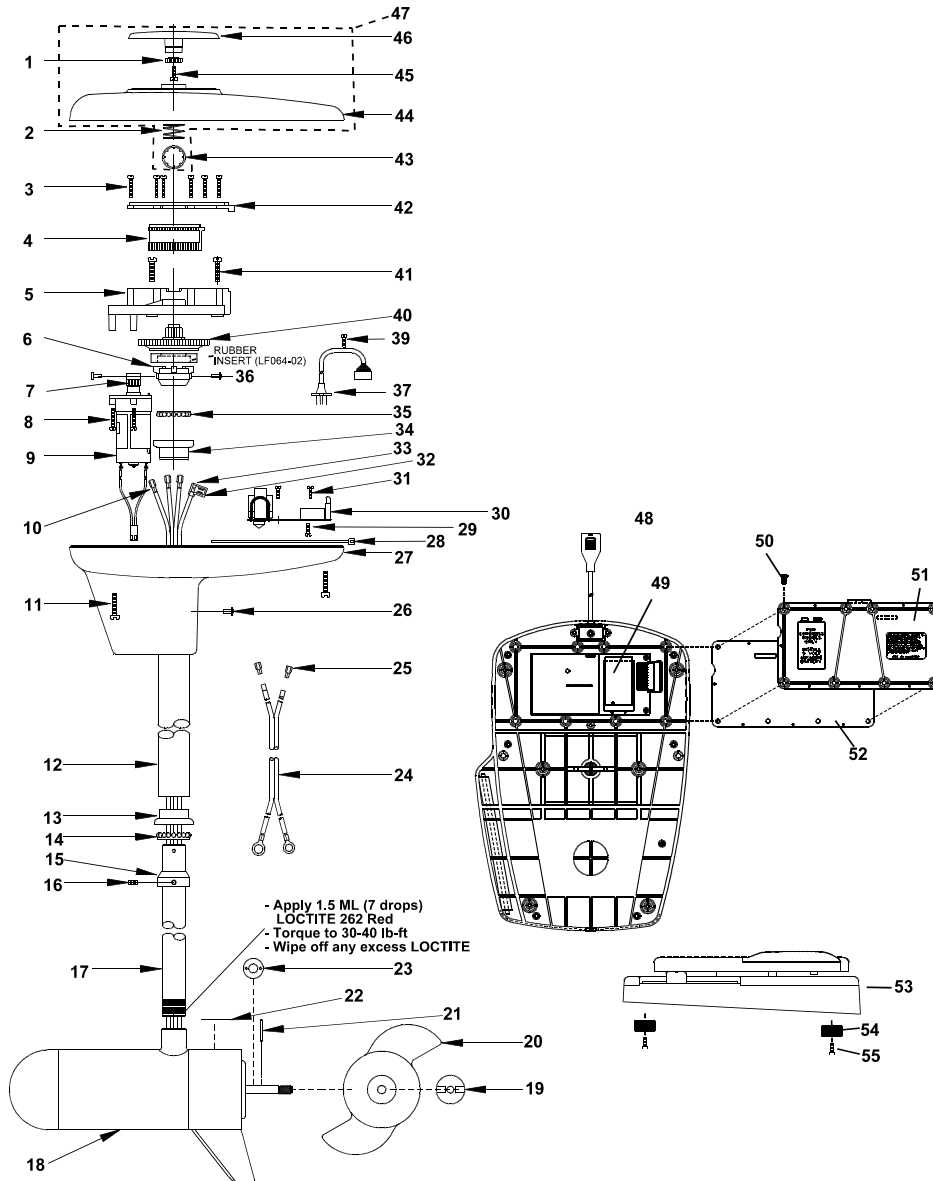


MotorGuide® REPAIR PARTS

Models:
L320ES



SPECIFICATIONS:

Year of Intro	1994
Thrust	37LBS
Volts	12VDC
Amp Draw	0 to 48 amps
Mount	01 Bow
Speeds	Variable

QUICK REFERENCE PARTS GUIDE:

MOSFET	JF096-08
Motor Seal Kit	6220

Note: Should the original pedal need service, upgrade pedal to Lazer II ES pedal with housing receptacle.

PARTS ORDERING & TECH ASSISTANCE

MotorGuide Consumer Relations
Phone 918-831-6989
Fax 800-982-8093

Send Returned Goods to:

MotorGuide
605 Hwy 12 West
Starkville, MS 39760

Returned Goods must be accompanied with a Returned Goods Authorization. Contact MotorGuide Consumer Relations to obtain RGA.

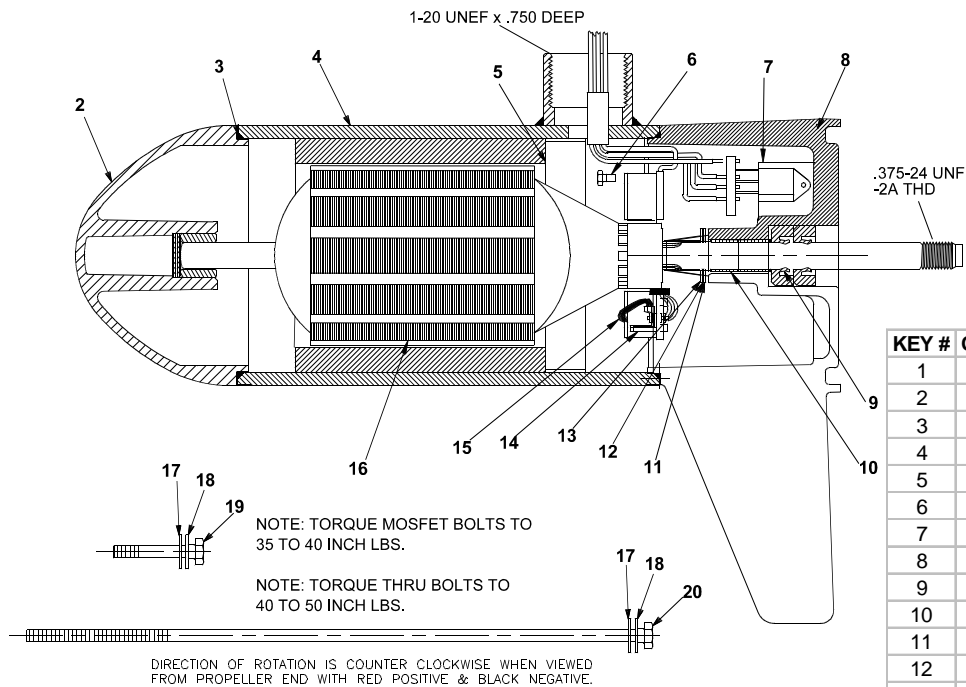
KEY#	PART#	DESCRIPTION	KEY#	PART#	DESCRIPTION	KEY#	PART#	DESCRIPTION
1	LF069-04	LAZER GEAR/INDICATOR	22	LF060-04	LOWER UNIT DECAL LAZER	47	LF053-29	LAZER II GENERIC TH COVER
2	LF014-01	SPRING/INDICATOR	23	RK171-01	NYLON WASHER .125" THICK	48	NP327-03	CONTROL CABLE
3	LF141-02	SCREW #4 X 7/8	24	LF328-01	BATTERY CABLE ASY	49	NP157-04	LAZER II INTERFACE BD ES
4	LF125-01	RACK	25	PM160-01	TERMINAL	50	XF141-06	#6X32X7/16 SCREW
5	LF126-01	RACK GUIDE	26	LF111-02	POP RIVET .126-.187 D6	51	NP012-01	LAZER II BATTERY DOOR
6	LF064-01	COLUMN COUPLER	27	LF004-02	T/H BASE	52	NP079-02	LAZER II DOOR GASKET
7	LF068-03	PINION GEAR	28	AF030-01	CABLE TIE	53	NP300-10	LAZER II PEDAL ASY
8	LF141-02	SCREW #4 X 7/8	29	AF141-01	SCREW, SELF TAPPING	54	XP023-01	FOOT PEDAL PADS
9	LF3126-01	DRIVE MOTOR ASSY 12V	30	LF157-01	LAZER II 12V ES/RF BOARD	55	XF135-01	SCREW, PAD
10	PM160-01	TERMINAL	31	AF141-01	SELF TAPPING SCREW			
11	LF141-04	SCREW #8 X 1"	32	BR161-03	20-14 FLAG TERMI/STRIP G2			
12	AF165-06	(46") OUTER TUBE	33	AT080-01	INSULATING SLEEVE			
	AF165-07	(30") OUTER TUBE	34	FM007-01	BEARING CUP			
	AF165-08	(36") OUTER TUBE	35	FM005-01	BALL BEARING			
	AF165-01	(13") OUTER TUBE	36	LF111-01	POP RIVET .376-.500 D6			
13	FM007-01	RETAINER/ BEARING CUP	37	LF327-02	HOUSING CABLE			
14	FM005-01	BEARING	38					
15	AF006-01	RETAINER/BEARING	39	IR133-01	SELF TAPPING SCREW			
16	AF143-01	SET SCREW	40	LF69-08	LARGE PINION GEAR			
17	LF049-03	36" SS COLUMN	41	LF141-03	SCREW #8X3/4			
	LF049-04	42" SS COLUMN	42	LF127-01	RACK GUIDE COVER			
	LF049-05	50" SS COLUMN	43	LF098-01	TINNERMAN CLIP			
	LF049-08	54" SS COLUMN	44	LF053-29	LAZER II GENERIC TH COVER			
	LF049-09	60" SS COLUMN	45	LF141-06	SCREW #6X1/2 PLASTIC			
18	KF397-04	F/O MOTOR	46	LF078-09	LAZER INDICATOR			
19	AR099-01	PROP NUT						
20	AF124-10	3.5 NINJA 3 BLADE PROP						
21	BR102-01	PROP DRIVE PIN						

PARTS NOT ILLUSTRATED

LF056-04 TOP HOUSING DECAL

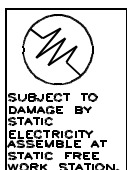
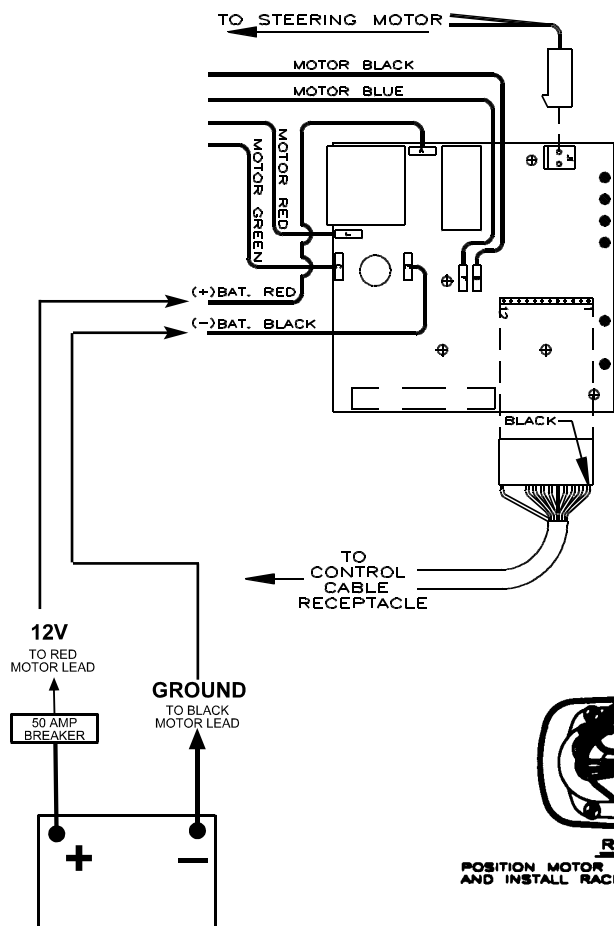
LOWER UNIT BREAKDOWN

Models:
L320ES



KEY #	QTY	DESCRIPTION	PART NO.
1	X	MOTOR	KF397-04
2	1	NOSE CAP	JF3212-01
3	2	O RING SEAL	MR217-01
4	1	HOUSING ASSY	KF3210-01
5	1	RETAINER	JF233-01
6	2	BRUSH CARD SCREW	MR228-01
7	1	DURA AMP MODULE	JF096-08
8	1	COMM CAP	JF3205-04
9	2	SHAFT SEAL	MR223-01
10	1	BEARING	MR206-01
11	1	NYLATRON WASHER	MR226-01
12	1	WASHER	MR227-01
13	1	E RING	MR219-01
14	2	BRUSH SPRINGS	MR214-02
15	1	BRUSH ASSY LESS SPRING	JF3201-04
16	1	ARMATURE 3.5"	KF3207-01
17	4	STATIC SEAL	MR222-01
18	4	THRU BOLT WASHER	MR216-01
19	2	DURA AMP SCREW	MR229-01
20	2	THRU BOLT	MR218-01

WIRING



Lubricate wire exiting pinion with non washout grease and bend wires flat to clear indicator gear teeth.

Battery cable leads to be bent at 90 degrees. Leads must be at or below top of Control electronics board.

