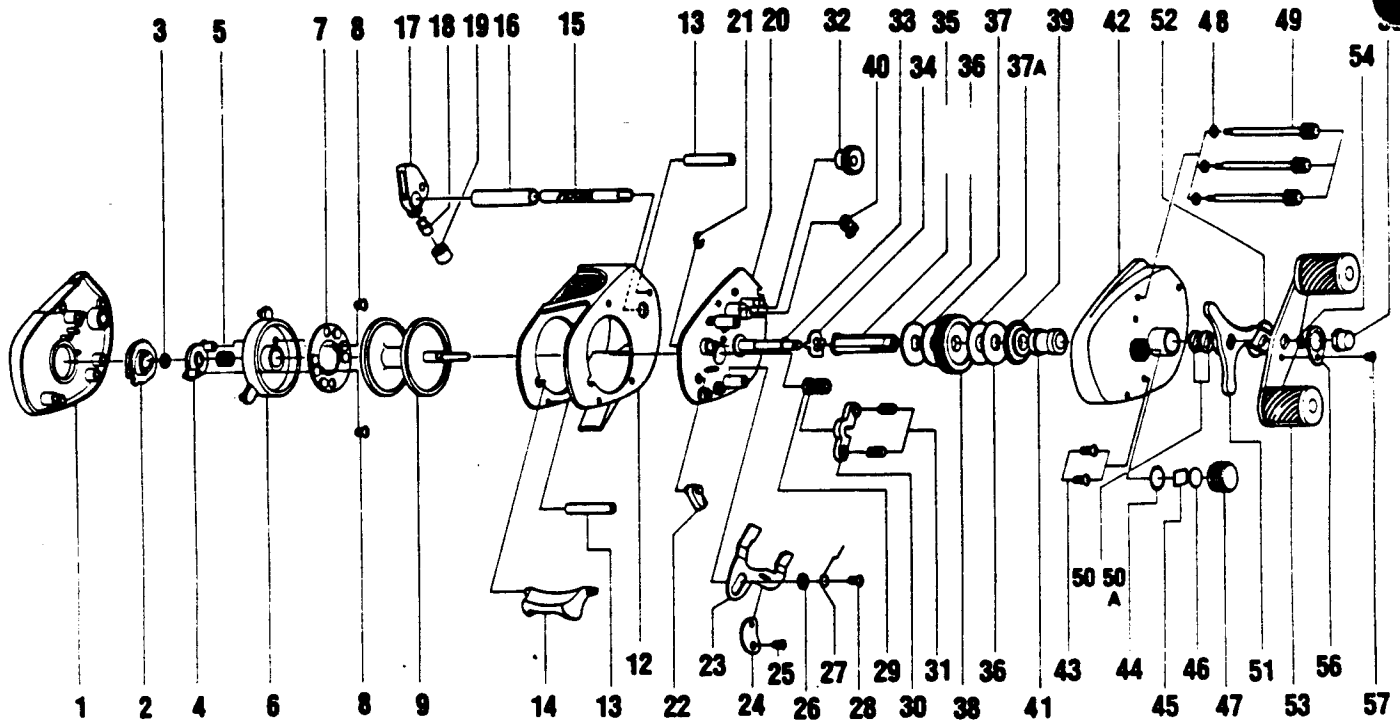


# ZEBCO 511MG

# DISCONTINUED



Key No.	Part No.	Description	Price	Key No.	Part No.	Description	Price
1	YX4101	LEFT SIDE COVER	10.03	33	GX4105	SET PLATE SHAFT WSHR	.49
2	VX4303	MAGNET CONTROL DIAL	1.53	34	GX4655	CONTROL ELEMENT	1.23
3	VX4250	DIAL FRICTION RING	.85	35	GX4652	CRANK SHAFT	3.69
4	VX4261	SLIDE CAM	.91	36	GX4653	DRAG WASHER 'D'	1.84
5	VX4301	SLIDE CAM SPRING	.80	37	GX4659	DRAG WASHER 'B'	1.46
6	YX4108	SPOOL COVER	4.71	37	GX4659-1	DRAG W/S B (.8 T)	1.46
7	VX4257	MAGNET PLATE ASSY	13.45	38	GX4651	DRIVE GEAR	3.80
8	VX4602	MAGNET PLATE SCREW	1.77	39	GX4451	ANTI-REVERSE	1.84
9	YX4251	SPOOL ASSY.	12.73	40	YX4452	ANTI-REVERSE PAWL	3.78
12	YX4051	FRAME	10.16	41	GX4254	RIGHT SIDE CVR BUSHING	2.21
13	GX4159	CARRIER GUIDE	1.72	42	EW4103	RIGHT SIDE COVER	8.72
14	YX4406	THUMB BAR	5.74	43	GX4352	RIGHT SIDE CVR SCR	1.16
15	YX4151	WORM SHAFT	2.98	44	GX4258	SPOOL TENSION KN. RING	.91
16	YX4158	WORM SHAFT GUIDE	4.87	45	GX4304	SPOOL TEN. KN. WSHR (SQ)	.49
17	YX4201	LINE GUIDE CARRIER	6.42	46	GX4302	SPOOL TNSN. KN. WSHR.(FL)	.49
18	GX4202	LINE GUIDE PAWL	1.66	47	YX4259	SPOOL TENSION KNOB	4.02
19	GX4204	LINE GUIDE CARRIER SCR	1.78	48	GX4109	FRAME SCREW WSHR	.49
20	EW4351	SET PLATE ASSY.	9.35	49	GX4104	FRAME SCREW	1.53
21	GX4665	SHAFT CLIP-E	.49	50	GX4662	SPRING WASHER	1.53
22	GX4406	THUMB BAR CAM	.99	50	GX4662-1	SPRING W/S (.4 T)	1.53
23	GX4402	RELEASE SLIDER	2.27	51	GX4663	STAR DRAG	7.06
24	GX4405	LINK	1.23	52	GX4660	HANDLE WASHER	1.23
25	GX4506	LINK SCREW	.74	53	YX4701	HANDLE ASSY.	10.16
27	GX4502	SPOOL REL. SPRING	.91	54	GX4657	CRANK SHAFT E-CLIP	.49
28	GX4656	RELEASE SLIDER SCREW	.91	55	GX4702	HANDLE NUT	.99
29	GX4256	PINION GEAR ASSY	2.83	56	GX4703	HANDLE NUT LOCK	.91
30	GX4401	PINION YOKE	1.16	57	GX4704	HANDLE NUT LOCK SCR	.42
31	GX4403	PINION YOKE SPR	.91	58	YX4105	SET PLATE SHAFT W/S	2.00
32	GX4150	OSCILLATOR GEAR	3.14	59	YX4156	SPOOL SHAFT BUSHING	2.00

Prices subject to change without notice. Prices do not include postage and handling. Some parts may not be available.

**PLEASE ORDER BY PART NUMBER**

Rev. 5/82 Zebco Division Brunswick Corporation, Box 370, Tulsa, OK 74101 USA 918-836-5581

