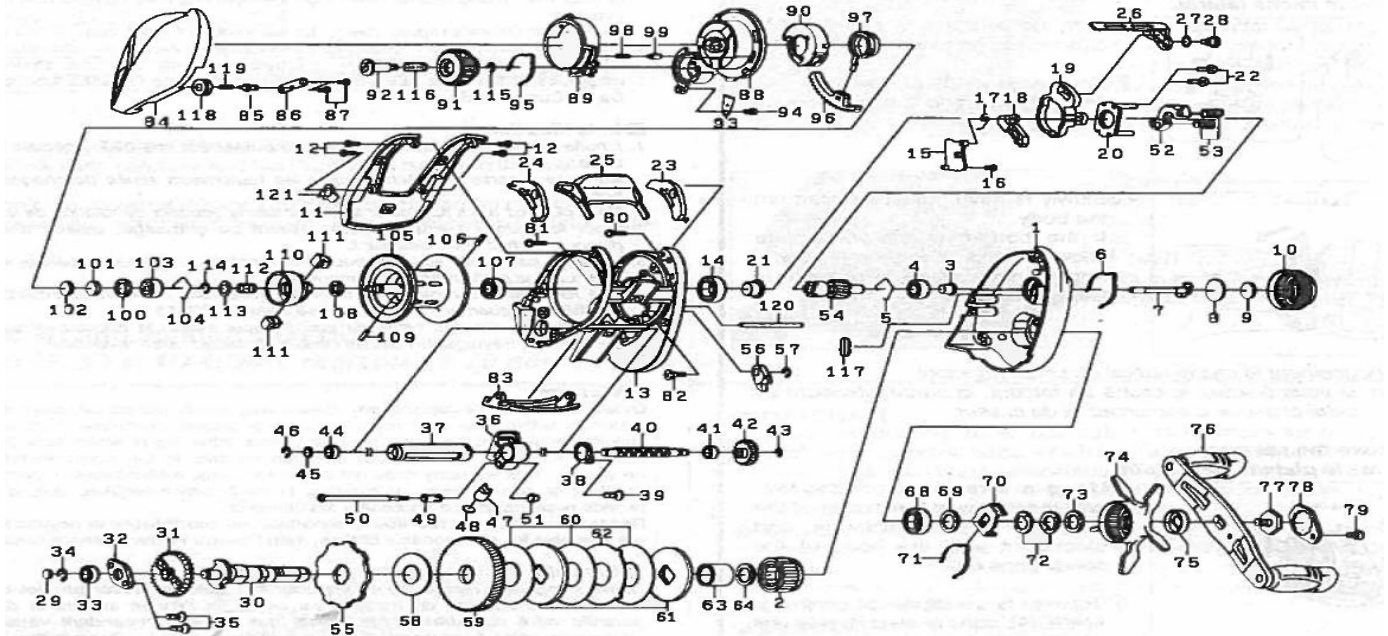


Please order by parts number, not key number
 Veuillez indiquer le numéro de la pièce (Non "Key" No.)



BAITCASTING REEL

Z200H / Z200HS



Key No.	Parts No.	Parts Name
1	H69-3601	Right side plate
2	F55-2703	Roller clutch
3	H15-9501	Ball bearing collar (A)
4	F81-1804	Ball bearing (A)
5	H16-0801	Bearing retainer (A)
6	H16-0901	Click leaf spring (A)
7	H15-9601	Spinion shaft
8	H16-1001	Spacer (A)
9	B17-5503	Spacer (B)
10	H28-1203	Cast control cap
11	H28-1302	Cover
12	G55-7101	Cover screw
13	H69-4601	Frame assembly
14	G52-3403	Ball bearing (B)
15	H28-1601	Clutch plate
16	H29-4101	Screw (A)
17	H28-1701	Clutch cam spring
18	H28-1801	Clutch trip lever
19	H28-1901	Clutch cam
20	H28-2001	Clutch cam plate (A)
21	H26-6601	Ball bearing collar (B)
22	B03-2904	Clutch cam screw
23	H28-2101	Spacer (C)
24	H28-2201	Spacer (E)
25	H28-2301	Clutch lever
26	H28-2401	Clutch cam plate (B)
27	H15-9201	Washer (A)
28	H15-9301	Screw (B)
29	G09-9800	Washer (B)
30	H69-3701	Drive shaft
31	H27-5001	Drive shaft gear
32	H15-6501	Plate
33	G53-8003	Ball bearing (C)
34	320-8002	Retainer
35	E13-4509	Screw (J)
36	H28-2601	Line guide
37	H28-2901	Level wind guard
38	H28-9101	Worm shaft plate
39	H29-4101	Screw (C)
40	H69-3901	Worm shaft
41	G72-0001	Worm shaft bearing (A)
42	H27-5101	Worm shaft gear
43	B33-9801	Worm shaft retainer (A)
44	G72-0001	Worm shaft bearing (B)
45	B41-1700	Worm shaft washer
46	320-5901	Worm shaft retainer (B)
47	H16-8601	Line guide pawl
48	G09-9800	Line guide washer
49	H16-8701	Line guide collar
50	H27-5201	Line guide screw
51	H43-2401	Front plate collar
52	H28-3101	Yoke
53	H28-3201	Yoke spring
54	H27-5501	Pinion gear
55	H31-2501	Clutch wheel
56	H70-8401	Stopper
57	B33-9801	Retainer (A)
58	H35-9401	Drive shaft washer
59	H69-4701	Drive gear

Key No.	Parts No.	Parts Name
60	H22-7101	Drag washer
61	H35-9301	Key washer (A)
62	H22-7301	Eared washer
63	H15-7201	Gear shaft collar
64	373-7816	Bearing washer (A)
68	G52-3403	Ball bearing (D)
69	373-7810	Bearing washer (B)
70	H15-8801	Click leaf spring holder
71	H15-8701	Click leaf spring (B)
72	150-8901	Drag spring washer
73	G69-4201	Washer (C)
74	H69-4101	Star drag
75	H32-6801	Handle collar
76	H69-4001	Handle assembly
77	H16-6801	Handle screw (A)
78	H28-3603	Handle screw plate
79	H25-7001	Handle screw (B)
80	G04-0801	Screw (D)
81	G04-0802	Screw (E)
82	E13-4516	Screw (F)
83	H28-3703	Front plate
84	H69-4201	Left side plate
85	H48-5101	Screw (G)
86	H28-4201	Left side plate retainer
87	G17-1402	Screw (H)
88	H28-4301	Left set plate (A)
89	H28-4401	Brake adjusting knob (A)
90	H69-4301	Left set plate (B)
91	H28-4702	Brake adjusting knob (B)
92	H28-4801	Set plate screw
93	H28-4901	Set plate retainer
94	E49-2003	Screw (I)
95	H28-5001	Brake dick spring
96	H28-5201	Magnet holder
97	H69-4401	Magnet holder gear
98	H28-5501	Brake adjusting knob spring
99	H28-5601	Brake adjusting knob pawl
100	G18-5101	Spacer (D)
101	375-7411	Spacer (F)
102	375-7400	Spacer (G)
103	G51-1506	Ball bearing (E)
104	H44-8401	Bearing retainer (B)
105-114	H69-3401	Spool assembly
115	B33-9801	Brake dial retainer
116	H44-0001	Set plate spring
117	H44-0201	Left side plate spacer
118	H46-4901	Left side plate nut
119	H48-5001	Left side plate spring
120	H50-7201	Stabilizer bar
121	H57-8301	Cover plate

■ Z200HS		
Key No.	Parts No.	Parts Name
1	H69-4901	Right side plate
10	H28-1202	Cast control cap
13	H69-5001	Frame assembly
54	H38-7101	Pinion gear
59	H69-5101	Drive gear
105-114	H69-3402	Spool assembly