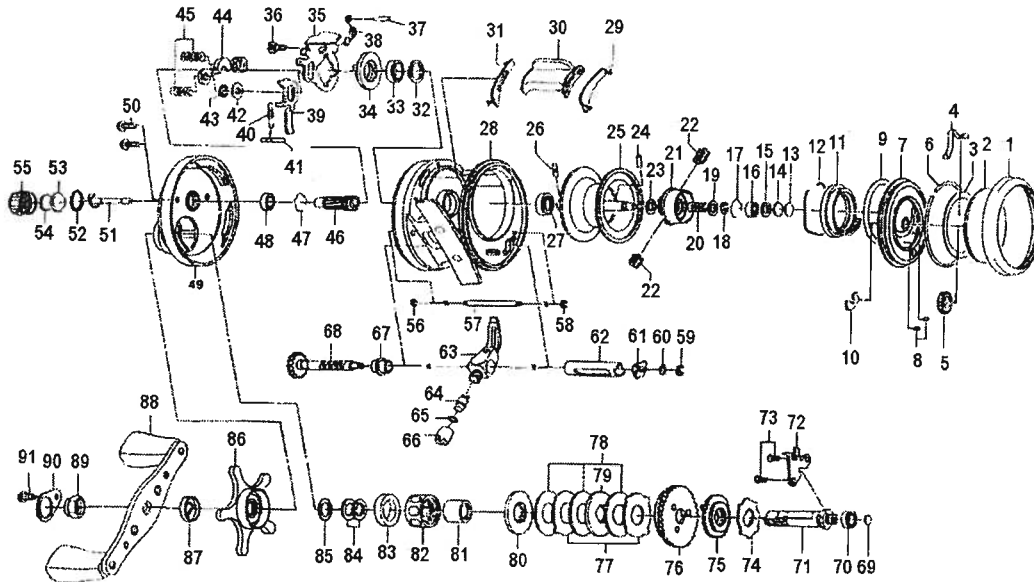


BAITCASTING REEL

TEAM DAIWA LUNA 203L/253L



| Key No. | Parts No. | Parts Name | Key No. | Parts No. | Parts Name |
|---------|-----------|--------------------------|---------|-----------|------------------------|
| 1 | F79-8111 | R/S OUTER RING | 57 | G52-7801 | STABILIZER BAR |
| 2 | G28-8809 | DIAL | 58 | F55-0501 | STABILIZER BAR RET |
| 3 | G28-7801 | RING | 59 | 320-5901 | WORM SHAFT RET |
| 4 | G28-8101 | CLICK SPRING | 60 | 373-1303 | WORM SHAFT WASHER |
| 5 | G53-8701 | IDLE GEAR | 61 | F79-5801 | WORM SHAFT HOLDER A |
| 6 | F79-8201 | RET | 62 | F79-5101 | LEVEL WIND GUARD |
| 7 | G60-9002 | R/S PLT | 63 | F79-5201 | LINE GUIDE |
| 8 | G50-0901 | PIN | 64 | 121-4212 | LINE GUIDE PAWL |
| 9 | F79-8301 | O RING A | 65 | 375-4101 | LINE GUIDE PAWL WASHER |
| 10 | G53-8801 | DIAL HOLDER | 66 | 341-5901 | PAWL CAP |
| 11 | G28-8402 | MAGNET HOLDER | 67 | F79-5501 | WORM SHAFT HOLDER B |
| 12 | G00-4601 | MAGNET HOLDER RET | 68 | F84-9101 | WORM SHAFT |
| 13 | 375-7404 | SPACER A | 69 | F57-5601 | DRIVE SHAFT WASHER |
| 14 | 375-7411 | SPACER B | 70 | G53-8001 | BALL BEARING D |
| 15 | F57-4303 | SPACER C | 71 | F84-9002 | DRIVE SHAFT |
| 16 | G43-1101 | BALL BEARING A | 72 | F99-8001 | DRIVE SHAFT RET |
| 17 | E21-9701 | BEARING RET A | 73 | E13-4501 | DRIVE SHAFT RET SCREW |
| 18-27 | Z01-7613 | SPOOL | 74 | F76-1701 | A/R RATCHET |
| 28 | G82-9601 | FRAME | 75 | F79-5901 | DRIVE GEAR A |
| 29 | F79-3305 | CLUTCH LEVER PLT A | 76 | F99-8501 | DRIVE GEAR B |
| 30 | F99-7501 | CLUTCH LEVER | 77 | F79-6101 | EARED WASHER |
| 31 | F79-3203 | CLUTCH LEVER PLT B | 78 | G42-8501 | DRAG WASHER |
| 32 | F79-3401 | BEARING RET B | 79 | F79-6301 | KEY WASHER A |
| 33 | G43-1001 | BALL BEARING B | 80 | B36-0303 | KEY WASHER B |
| 34 | F99-7401 | CLUTCH CAM | 81 | G05-6301 | GEAR SHAFT COLLAR |
| 35 | F99-7701 | YOKE PLT | 82 | F55-2703 | ROLLER CLUTCH |
| 36 | F79-3801 | YOKE PLT SCREW | 83 | G05-6201 | DRAG COLLAR |
| 37 | F79-4401 | CLUTCH SPRING PIN | 84 | 150-8901 | DRAG SPRING WASHER |
| 38 | G60-8901 | CLUTCH SPRING | 85 | 373-7810 | SPACING SLEEVE |
| 39 | F99-7901 | CLUTCH TRIP PLT | 86 | G70-3802 | STAR DRAG |
| 40 | F79-4701 | CLUTCH TRIP LEVER SPRING | 87 | F85-0401 | HANDLE COLLAR |
| 41 | F79-4601 | CLUTCH TRIP LEVER PIN | 88 | G70-5501 | HANDLE |
| 42 | 371-6905 | CLUTCH TRIP LEVER WASHER | 89 | 341-5805 | HANDLE NUT |
| 43 | 320-1402 | CLUTCH TRIP LEVER RET | 90 | 040-3208 | HANDLE NUT PLT |
| 44 | F99-8201 | YOKE | 91 | 353-8301 | HANDLE NUT PLT SCREW |
| 45 | F79-4901 | YOKE SPRING | | | |
| 46 | F99-8301 | PINION GEAR | | | |
| 47 | E21-9701 | BEARING RET C | | | |
| 48 | G43-0901 | BALL BEARING C | | | |
| 49 | G14-6507 | L/S PLT | | | |
| 50 | B67-9302 | R/S PLT SCREW | | | |
| 51 | F80-0501 | PINION SHAFT | | | |
| 52 | 171-5201 | O RING B | | | |
| 53 | B17-5401 | SPOOL ADJ CAP METAL | | | |
| 54 | B17-5503 | RUBBER WASHER | | | |
| 55 | F57-4403 | CAST CONTROL CAP | | | |
| 56 | F55-0501 | STABILIZER BAR RET | | | |

| TDLUNA253L Special Parts | | |
|--------------------------|-----------|------------------|
| Key No. | Parts No. | Parts Name |
| 18-27 | Z01-7616 | SPOOL |
| 28 | G82-9401 | FRAME |
| 30 | F99-7601 | CLUTCH LEVER |
| 35 | F99-7801 | YOKE PLT |
| 49 | G14-6506 | L/S PLT |
| 57 | G52-7901 | STABILIZER BAR |
| 62 | F81-9901 | LEVEL WIND GUARD |
| 68 | F81-9401 | WORM SHAFT |