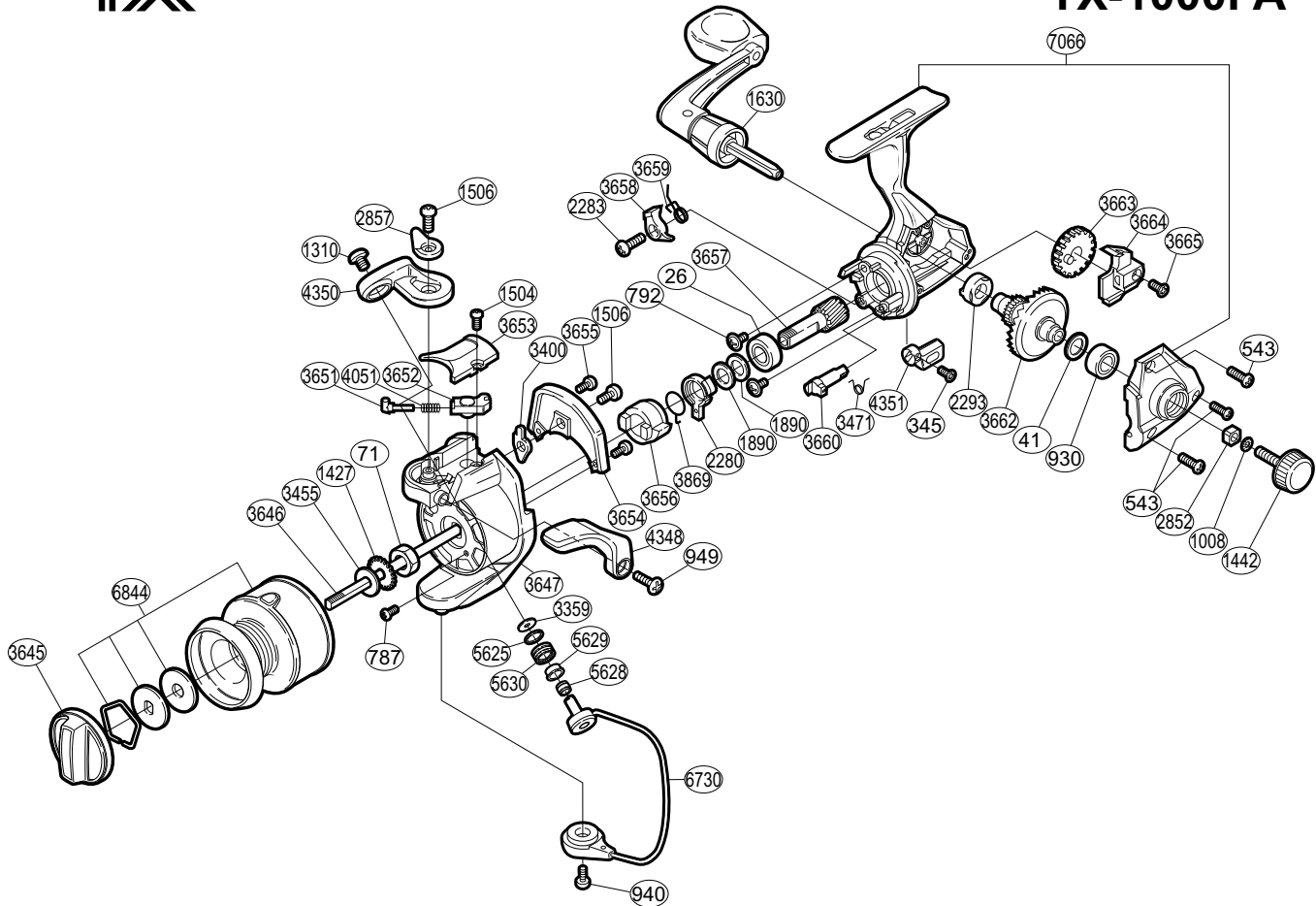


SHIMANO®

TX®

TX-1000FA



Part No.	Description	Part No.	Description	Part No.	Description
RD 0026	Ball Bearing	RD 2283	Anti-Reverse Pawl Screw	RD 3659	Anti-Reverse Pawl Spring
RD 0041	Drive Gear Washer	RD 2293	Drive Gear Bushing	RD 3660	Anti-Reverse Cam
RD 0071	Rotor Nut	RD 2852	Handle Screw Lock	RD 3662	Drive Gear
RD 0345	Anti-Reverse Lever Screw	RD 2857	Trigger Cam	RD 3663	Oscillating Gear
RD 0543	Side Cover Screw	RD 3359	Line Roller Washer	RD 3664	Oscillating Slider
RD 0787	Nut Lock Screw	RD 3400	Bail Trip Lever	RD 3665	Slider Retainer Screw
RD 0792	Bearing Retainer Screw	RD 3455	Spool Washer	RD 3869	Anti-Reverse Lock Out Spring
RD 0930	Ball Bearing	RD 3471	Anti-Reverse Cam Spring	RD 4051	Bail Spring
RD 0940	Bail Hold Support Screw	RD 3645	Drag Knob	RD 4348	Quick-Fire II Trigger
RD 0949	Trigger Screw	RD 3646	Main Shaft	RD 4350	Bail Arm
RD 1008	Handle Lock Washer	RD 3647	Rotor	RD 4351	Anti-Reverse Lever
RD 1310	Line Roller Screw	RD 3651	Bail Spring Guide (A)	RD 5625	Line Roller Spacer
RD 1427	Spool Support	RD 3652	Bail Spring Guide (B)	RD 5628	Line Roller Collar
RD 1442	Handle Screw Cap	RD 3653	Bail Spring Cover	RD 5629	Line Roller Bushing
RD 1504	Bail Spring Cover Screw	RD 3654	Counterbalance Cover	RD 5630	Line Roller
RD 1506	Multi-Purpose Screw	RD 3655	Cover Screw	RD 6730	Bail Assembly
RD 1630	Handle Assembly	RD 3656	Anti-Reverse Ratchet	RD 6844	Spool Assembly
RD 1890	Bushing Washer	RD 3657	Pinion Gear	RD 7066	Body Assembly
RD 2280	Anti-Reverse Lock Out	RD 3658	Anti-Reverse Pawl		