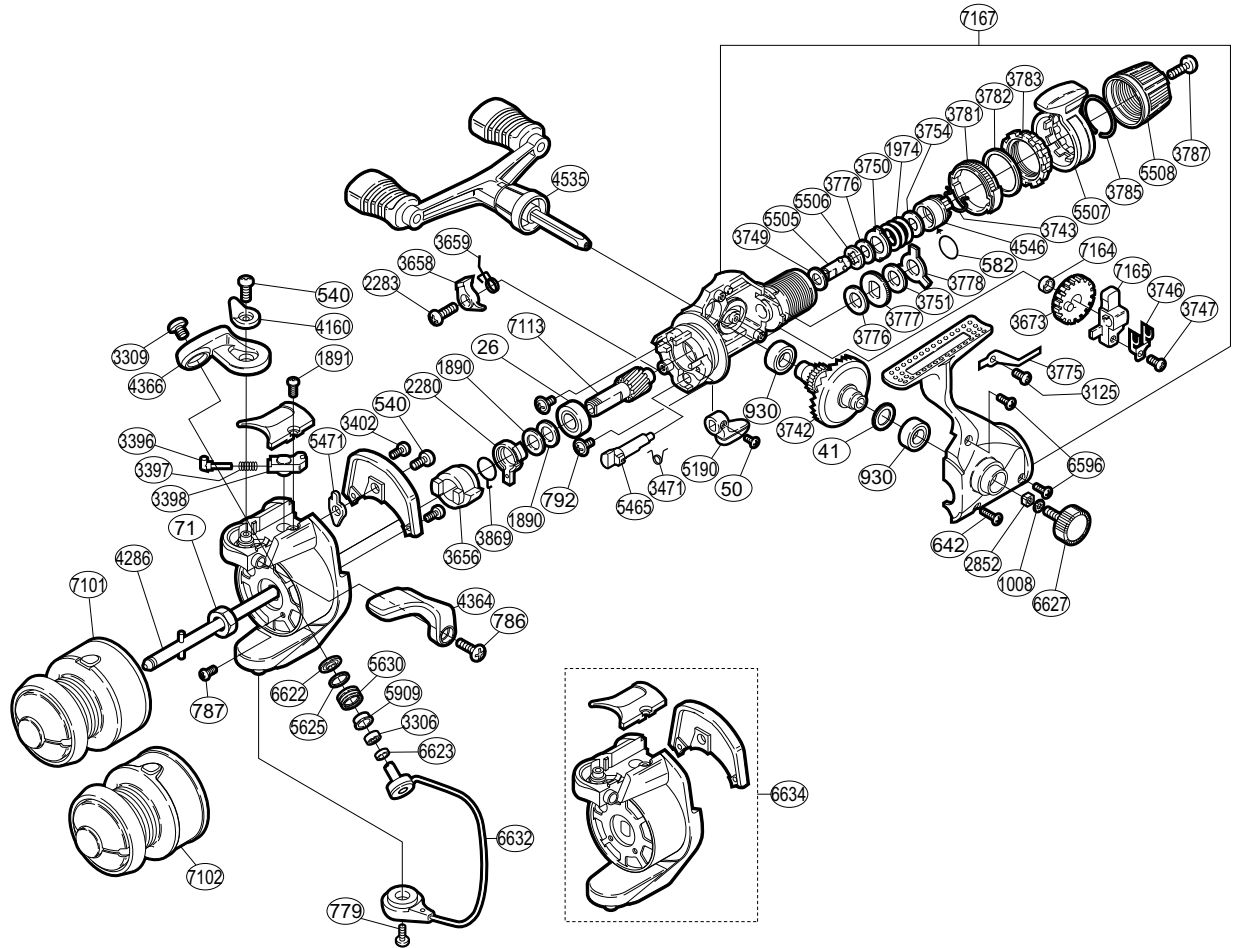


SHIMANO®

SPIREX®

SR-2000RD



Part No.	Description	Part No.	Description	Part No.	Description
RD 0026	Ball Bearing	RD 3471	Anti-Reverse Cam Spring	RD 4366	Bail Arm
RD 0041	Drive Gear Washer	RD 3656	Anti-Reverse Ratchet	RD 4535	Double Paddle Handle Assembly
RD 0050	Anti-Reverse Lever Screw	RD 3658	Anti-Reverse Pawl	RD 4546	Pressure Screw
RD 0071	Rotor Nut	RD 3659	Anti-Reverse Pawl Spring	RD 5190	Anti-Reverse Lever
RD 0540	Multi-Purpose Screw	RD 3673	Oscillating Gear	RD 5465	Anti-Reverse Cam
RD 0582	"O" Ring	RD 3742	Drive Gear	RD 5471	Bail Trip Lever
RD 0642	Side Cover Screw (long)	RD 3743	Hold Click Spring	RD 5505	Drag Shaft (A)
RD 0779	Bail Hold Support Screw	RD 3746	Oscillating Slider Retainer	RD 5506	Drag Shaft (B)
RD 0786	Trigger Screw	RD 3747	Slider Retainer Screw	RD 5507	Fightin' Drag Lever
RD 0787	Nut Lock Screw	RD 3749	Drag Washer "C" (white)	RD 5508	Drag Programmer
RD 0792	Bearing Retainer Screw	RD 3750	Eared Washer "B"	RD 5625	Line Roller Spacer
RD 0930	Ball Bearing	RD 3751	Drag Washer "C" (blue)	RD 5630	Line Roller
RD 1008	Handle Lock Washer	RD 3754	Drag Spring Washer	RD 5909	Line Roller Bushing
RD 1890	Bushing Washer	RD 3775	Drag Click	RD 6596	Side Cover Screw (short)
RD 1891	Bail Spring Cover Screw	RD 3776	Drag Washer "C" (cloth)	RD 6622	Line Roller Washer
RD 1974	Drag Coil Spring	RD 3777	Click Gear	RD 6623	Bearing Spacer
RD 2280	Anti-Reverse Lock Out	RD 3778	Eared Washer "B"	RD 6627	Handle Screw Cap
RD 2283	Anti-Reverse Pawl Screw	RD 3781	Lever Click Gear	RD 6632	Bail Assembly
RD 2852	Handle Screw Lock	RD 3782	Fightin' Pressure Screw Washer	RD 6634	Rotor Assembly
RD 3125	Drag Click Screw	RD 3783	Fightin' Pressure Screw	RD 7101	Spool Assembly (aluminum)
RD 3306	Line Roller Bearing	RD 3785	Lever Hold Spring	RD 7102	Spool Assembly (graphite)
RD 3309	Line Roller Screw	RD 3787	Drag Programmer Screw	RD 7113	Pinion Gear
RD 3396	Bail Spring Guide (A)	RD 3869	Anti-Reverse Lock Out Spring	RD 7164	Oscillating Gear Bushing
RD 3397	Bail Spring	RD 4160	Trigger Cam	RD 7165	Oscillating Slider
RD 3398	Bail Spring Guide (B)	RD 4286	Main Shaft	RD 7167	Body Assembly
RD 3402	Cover Screw	RD 4364	Quick-Fire II Trigger		