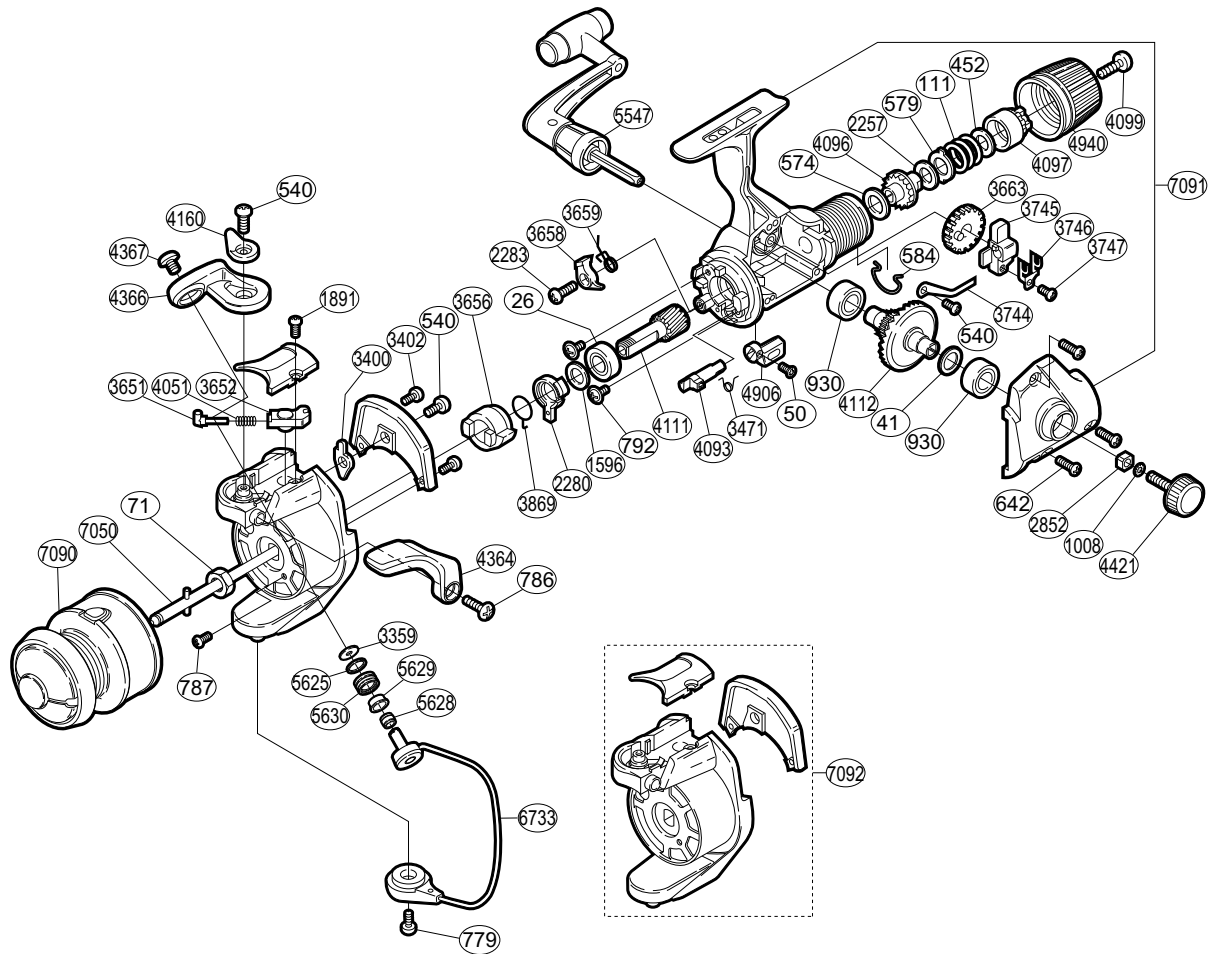


SHIMANO®

SIDESTAB®

SI-1000RD



Part No.	Description	Part No.	Description	Part No.	Description
RD 0026	Ball Bearing	RD 2283	Anti-Reverse Pawl Screw	RD 4099	Drag Knob Screw
RD 0041	Drive Gear Washer	RD 2852	Handle Screw Lock	RD 4111	Pinion Gear
RD 0050	Anti-Reverse Lever Screw	RD 3359	Line Roller Washer	RD 4112	Drive Gear
RD 0071	Rotor Nut	RD 3400	Bail Trip Lever	RD 4160	Trigger Cam
RD 0111	Drag Coil Spring	RD 3402	Cover Screw	RD 4364	Quick-Fire II Trigger
RD 0452	Drag Spring Washer	RD 3471	Anti-Reverse Cam Spring	RD 4366	Bail Arm
RD 0540	Multi-Purpose Screw	RD 3651	Bail Spring Guide (A)	RD 4367	Line Roller Screw
RD 0574	Drag Washer "C" (cloth)	RD 3652	Bail Spring Guide (B)	RD 4421	Handle Screw Cap
RD 0579	Eared Washer "B"	RD 3656	Anti-Reverse Ratchet	RD 4906	Anti-Reverse Lever
RD 0584	Hold Click Spring	RD 3658	Anti-Reverse Pawl	RD 4940	Drag Knob Assembly
RD 0642	Side Cover Screw	RD 3659	Anti-Reverse Pawl Spring	RD 5547	Handle Assembly
RD 0779	Bail Hold Support Screw	RD 3663	Oscillating Gear	RD 5625	Line Roller Spacer
RD 0786	Trigger Screw	RD 3744	Drag Click	RD 5628	Line Roller Collar
RD 0787	Nut Lock Screw	RD 3745	Oscillating Slider	RD 5629	Line Roller Bushing
RD 0792	Bearing Retainer Screw	RD 3746	Oscillating Slider Retainer	RD 5630	Line Roller
RD 0930	Ball Bearing	RD 3747	Slider Retainer Screw	RD 6733	Bail Assembly
RD 1008	Handle Lock Washer	RD 3869	Anti-Reverse Lock Out Spring	RD 7050	Main Shaft Assembly
RD 1596	Bushing Washer	RD 4051	Bail Spring	RD 7090	Spool Assembly
RD 1891	Bail Spring Cover Screw	RD 4093	Anti-Reverse Cam	RD 7091	Body Set
RD 2257	Drag Washer "H" (blue)	RD 4096	Drag Shaft	RD 7092	Rotor Assembly
RD 2280	Anti-Reverse Lock Out	RD 4097	Pressure Screw		