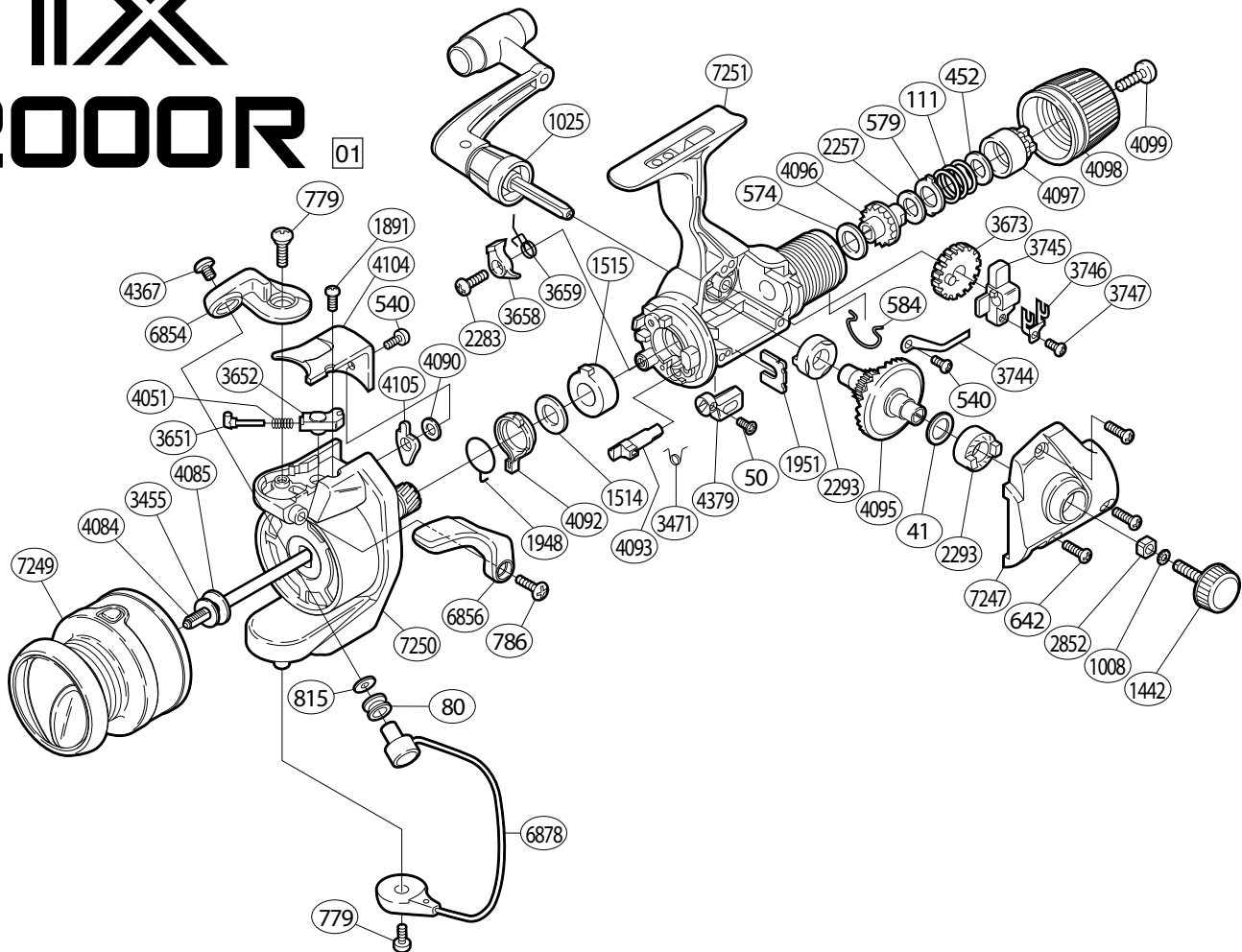


IX 2000R



Part No.	Description	Part No.	Description	Part No.	Description
RD 0041	Drive Gear Washer	RD 1951	Rotor Lock	RD 4092	Anti-Reverse Lock Out
RD 0050	Anti-Reverse Lever Screw	RD 2257	Drag Washer "H" (blue)	RD 4093	Anti-Reverse Cam
RD 0080	Line Roller	RD 2283	Anti-Reverse Pawl Screw	RD 4095	Drive Gear
RD 0111	Drag Coil Spring	RD 2293	Drive Gear Bushing	RD 4096	Drag Shaft
RD 0452	Drag Spring Washer	RD 2852	Handle Screw Lock	RD 4097	Pressure Screw
RD 0540	Multi-Purpose Screw	RD 3455	Spool Washer	RD 4098	Drag Knob
RD 0574	Drag Washer "C" (cloth)	RD 3471	Anti-Reverse Cam Spring	RD 4099	Drag Knob Screw
RD 0579	Eared Washer "B"	RD 3651	Bail Spring Guide (A)	RD 4104	Bail Spring Cover
RD 0584	Hold Click Spring	RD 3652	Bail Spring Guide (B)	RD 4105	Bail Trip Lever
RD 0642	Side Cover Screw	RD 3658	Anti-Reverse Pawl	RD 4367	Line Roller Screw
RD 0779	Multi-Purpose Screw	RD 3659	Anti-Reverse Pawl Spring	RD 4379	Anti-Reverse Lever
RD 0786	Trigger Screw	RD 3673	Oscillating Gear	RD 6854	Bail Arm
RD 0815	Line Roller Washer	RD 3744	Drag Click	RD 6856	Quick-Fire II Trigger
RD 1008	Handle Lock Washer	RD 3745	Oscillating Slider	RD 6878	Bail Assembly
RD 1025	Handle Assembly	RD 3746	Oscillating Slider Retainer	RD 7247	Side Cover
RD 1442	Handle Screw Cap	RD 3747	Slider Retainer Screw	RD 7249	Spool Assembly
RD 1514	Bushing Washer	RD 4051	Bail Spring	RD 7250	Rotor Assembly
RD 1515	Bushing	RD 4084	Main Shaft	RD 7251	Body
RD 1891	Bail Spring Cover Screw	RD 4085	Spool Support		
RD 1948	Anti-Reverse Lock Out Spring	RD 4090	Bail Trip Lever Washer		