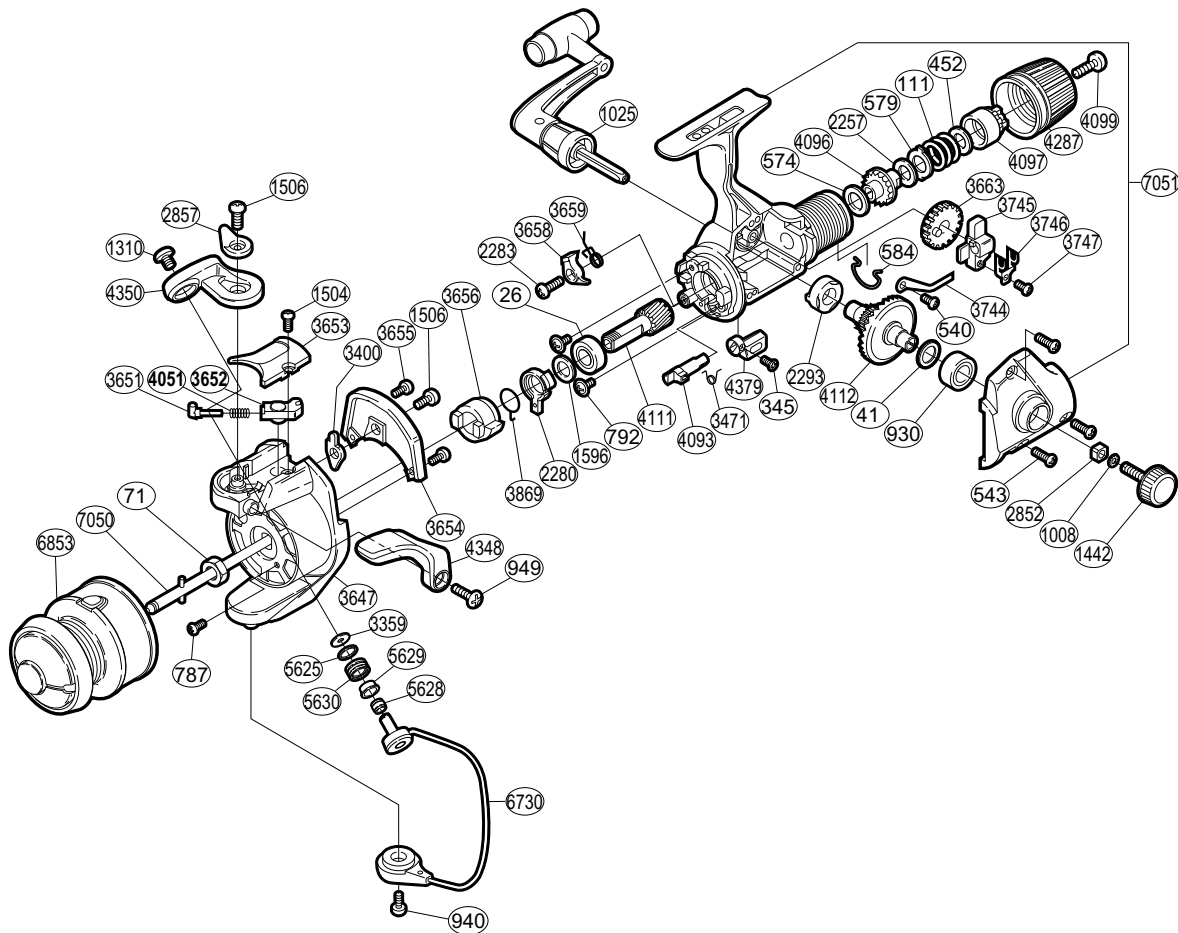


SHIMANO®

CX®

CX-1000RA



Part No.	Description	Part No.	Description	Part No.	Description
RD 0026	Ball Bearing	RD 1596	Bushing Washer	RD 3746	Oscillating Slider Retainer
RD 0041	Drive Gear Washer	RD 2257	Drag Washer "H" (blue)	RD 3747	Slider Retainer Screw
RD 0071	Rotor Nut	RD 2280	Anti-Reverse Lock Out	RD 3869	Anti-Reverse Lock Out Spring
RD 0111	Drag Coil Spring	RD 2283	Anti-Reverse Pawl Screw	RD 4051	Bail Spring
RD 0345	Anti-Reverse Lever Screw	RD 2293	Drive Gear Bushing	RD 4093	Anti-Reverse Cam
RD 0452	Drag Spring Washer	RD 2852	Handle Screw Lock	RD 4096	Drag Shaft
RD 0540	Drag Click Screw	RD 2857	Trigger Cam	RD 4097	Pressure Screw
RD 0543	Side Cover Screw	RD 3359	Line Roller Washer	RD 4099	Drag Knob Screw
RD 0574	Drag Washer "C" (cloth)	RD 3400	Bail Trip Lever	RD 4111	Pinion Gear
RD 0579	Eared Washer "B"	RD 3471	Anti-Reverse Cam Spring	RD 4112	Drive Gear
RD 0584	Hold Click Spring	RD 3647	Rotor	RD 4287	Drag Knob Assembly
RD 0787	Nut Lock Screw	RD 3651	Bail Spring Guide (A)	RD 4348	Quick-Fire II Trigger
RD 0792	Bearing Retainer Screw	RD 3652	Bail Spring Guide (B)	RD 4350	Bail Arm
RD 0930	Ball Bearing	RD 3653	Bail Spring Cover	RD 4379	Anti-Reverse Lever
RD 0940	Bail Hold Support Screw	RD 3654	Counterbalance Cover	RD 5625	Line Roller Spacer
RD 0949	Trigger Screw	RD 3655	Cover Screw	RD 5628	Line Roller Collar
RD 1008	Handle Lock Washer	RD 3656	Anti-Reverse Ratchet	RD 5629	Line Roller Bushing
RD 1025	Handle Assembly	RD 3658	Anti-Reverse Pawl	RD 5630	Line Roller
RD 1310	Line Roller Screw	RD 3659	Anti-Reverse Pawl Spring	RD 6730	Bail Assembly
RD 1442	Handle Screw Cap	RD 3663	Oscillating Gear	RD 6853	Spool Assembly
RD 1504	Bail Spring Cover Screw	RD 3744	Drag Click	RD 7050	Main Shaft Assembly
RD 1506	Multi-Purpose Screw	RD 3745	Oscillating Slider	RD 7051	Body Set