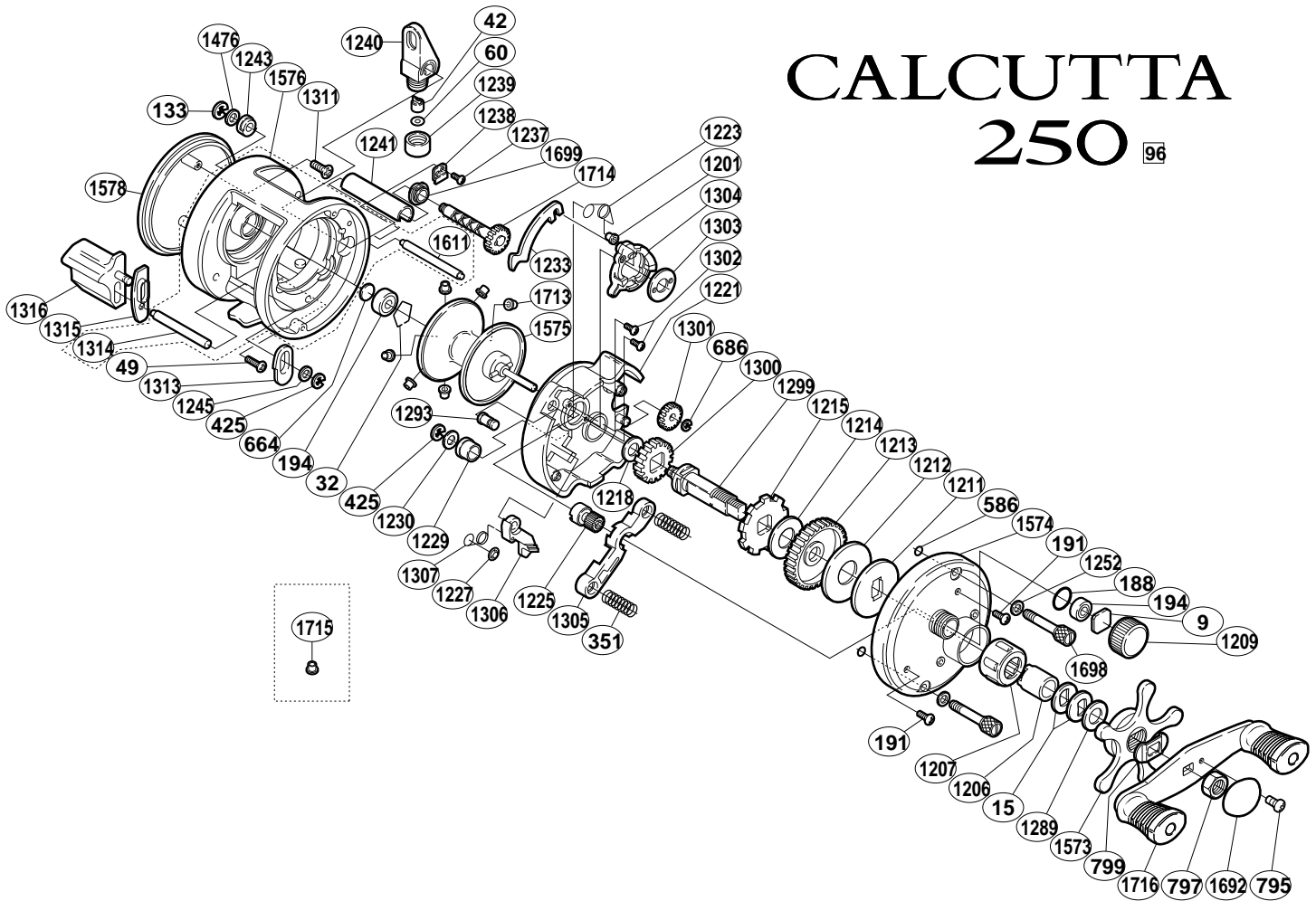


CALCUTTA 250 ⁹⁶



1997-10-7

BNT No.	PARTS NAMES	BNT No.	PARTS NAMES	BNT No.	PARTS NAMES
0009	Cast Control Spacer	1215	Anti-Reverse Ratchet	1306	Clutch Pawl
0015	Drag Spring Washer	1218	Idle Gear (A) Spacer	1307	Clutch Pawl Spring
0032	Bearing Retainer	1221	Set Plate	1311	Left Side Plate Screw
0042	Line Guide Pawl	1223	Retractor Spring	1313	Clutch Ber Guide (A)
0049	Left Side Plate Screw	1225	Pinion Gear	1314	Clutch Ber Support
0060	Spacer (optional)	1227	Clutch Pawl Spring Retainer	1315	Clutch Ber Guide (B)
0133	Worm Shaft Retainer	1229	Drive Shaft Bushing	1316	Quick-Fire II Clutch Bar
0188	"O" Ring	1230	Drive Shaft Spacer	1476	Worm Shaft Spacer
0191	Right Side Plate Screw	1233	Clutch Plate	1573	Ster Drag
0194	Ball Bearing	1237	Worm Bushing (A) Retainer Screw	1574	Rigte Side Plate
0351	Yoke Spring	1238	Worm Bushing (A) Retainer	1575	Spool Assembly
0425	"E" Lock	1239	Pawl Cap	1576	Forged One-Piece Frame
0586	Bolt Retainer	1240	Line Guide	1578	Left Side Plate
0664	Spacer (B)	1241	Level Wind Guard	1611	Level Wind Guide
0686	Idle Gear (B) Retainer	1243	Worm Bushing (B)	1692	Handle Nut Plate
0795	Handle Nut Plate Screw	1245	Clutch Ber Support Spacer	1698	Right Side Plate Bolt
0797	Handle Nut	1252	Right Side Plate Bolt Washer	1699	Worm Bushing (A)
0799	Friction Washer	1289	Ster Drag Spacer	1713	Brake Coller (green)
1201	Retractor Spring Collar	1293	Retractor Spring Pin	1714	Worm Shaft
1206	Roller Clutch Inner Tube	1299	Drive Shaft	1716	Handle Assembly
1207	Roller Clutch Bearing	1300	Idle Gear (A)		
1209	Cast Control Cap	1301	Idle Gear (B)		
1211	Key Washer	1302	Clutch Cam Screw		
1212	Drag Washer (C)	1303	Clutch Cam Retainer		
1213	Drive Gear	1304	Clutch Cam		
1214	Drag Washer (A)	1305	Yoke	1715	Brake Collar (red)