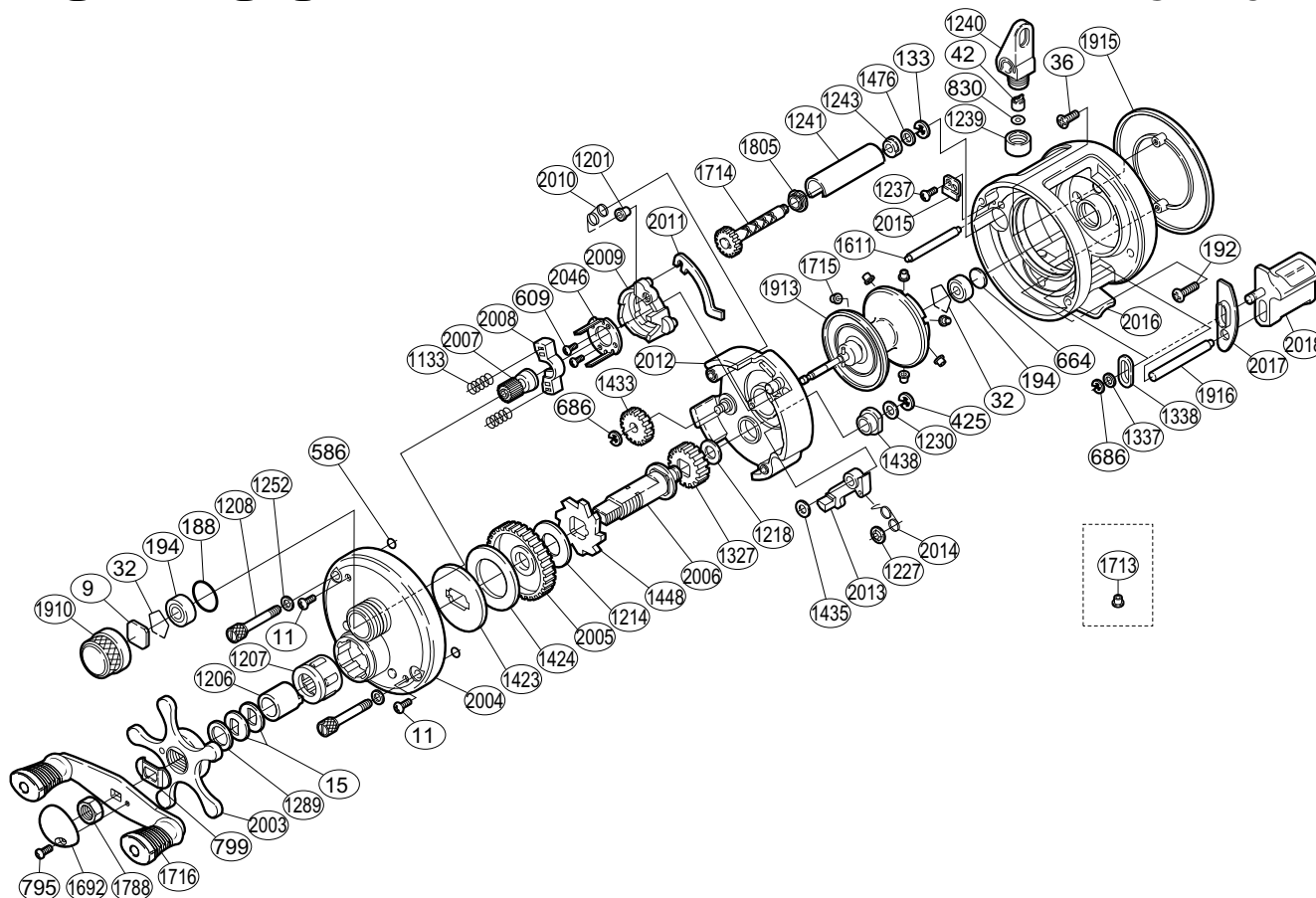


SHIMANO®

CALCUTTA®

CT-151



Part No.	Description	Part No.	Description	Part No.	Description
BNT0009	Cast Control Spacer	BNT1227	Clutch Pawl Spring Retainer	BNT1805	Worm Bushing (A)
BNT0011	Left Side Plate Screw	BNT1230	Drive Shaft Spacer	BNT1910	Cast Control Cap
BNT0015	Drag Spring Washer	BNT1237	Worm Bushing (A) Retainer Screw	BNT1913	Spool Assembly
BNT0032	Bearing Retainer	BNT1239	Pawl Cap	BNT1915	Right Side Plate
BNT0036	Right Side Plate Screw	BNT1240	Line Guide	BNT1916	Clutch Bar Support
BNT0042	Line Guide Pawl	BNT1241	Level Wind Guard	BNT2003	Star Drag
BNT0133	Worm Shaft Retainer	BNT1243	Worm Bushing (B)	BNT2004	Left Side Plate
BNT0188	"O" Ring	BNT1252	Left Side Plate Bolt Washer	BNT2005	Drive Gear
BNT0192	Right Side Plate Screw	BNT1289	Star Drag Spacer	BNT2006	Drive Shaft
BNT0194	Ball Bearing	BNT1327	Idle Gear	BNT2007	Pinion Gear
BNT0425	"E" Lock	BNT1337	Clutch Bar Support Spacer	BNT2008	Yoke
BNT0586	Bolt Retainer	BNT1338	Clutch Bar Guide (A)	BNT2009	Clutch Cam
BNT0609	Clutch Cam Screw	BNT1423	Key Washer	BNT2010	Retractor Spring
BNT0664	Spacer (B)	BNT1424	Drag Washer (C)	BNT2011	Clutch Plate
BNT0686	Idle Gear (B) Retainer	BNT1433	Idle Gear (B)	BNT2012	Set Plate
BNT0795	Handle Nut Plate Screw	BNT1435	Clutch Pawl Spacer	BNT2013	Clutch Pawl
BNT0799	Friction Washer	BNT1438	Drive Shaft Bushing	BNT2014	Clutch Pawl Spring
BNT0830	Spacer (optional)	BNT1448	Anti-Reverse Ratchet	BNT2015	Worm Bushing (A) Retainer
BNT1133	Yoke Spring	BNT1476	Worm Shaft Spacer	BNT2016	Forged One-Piece Frame
BNT1201	Retractor Spring Collar	BNT1611	Level Wind Guide	BNT2017	Clutch Bar Guide (B)
BNT1206	Roller Clutch Inner Tube	BNT1692	Handle Nut Plate	BNT2018	Quick-Fire II Clutch Bar
BNT1207	Roller Clutch Bearing	BNT1714	Worm Shaft	BNT2046	Clutch Cam Retainer
BNT1208	Left Side Plate Bolt	BNT1715	Brake Collar (red)		
BNT1214	Drag Washer (A)	BNT1716	Handle Assembly		
BNT1218	Idle Gear (A) Spacer	BNT1788	Handle Nut	BNT1713	Brake Collar (green)