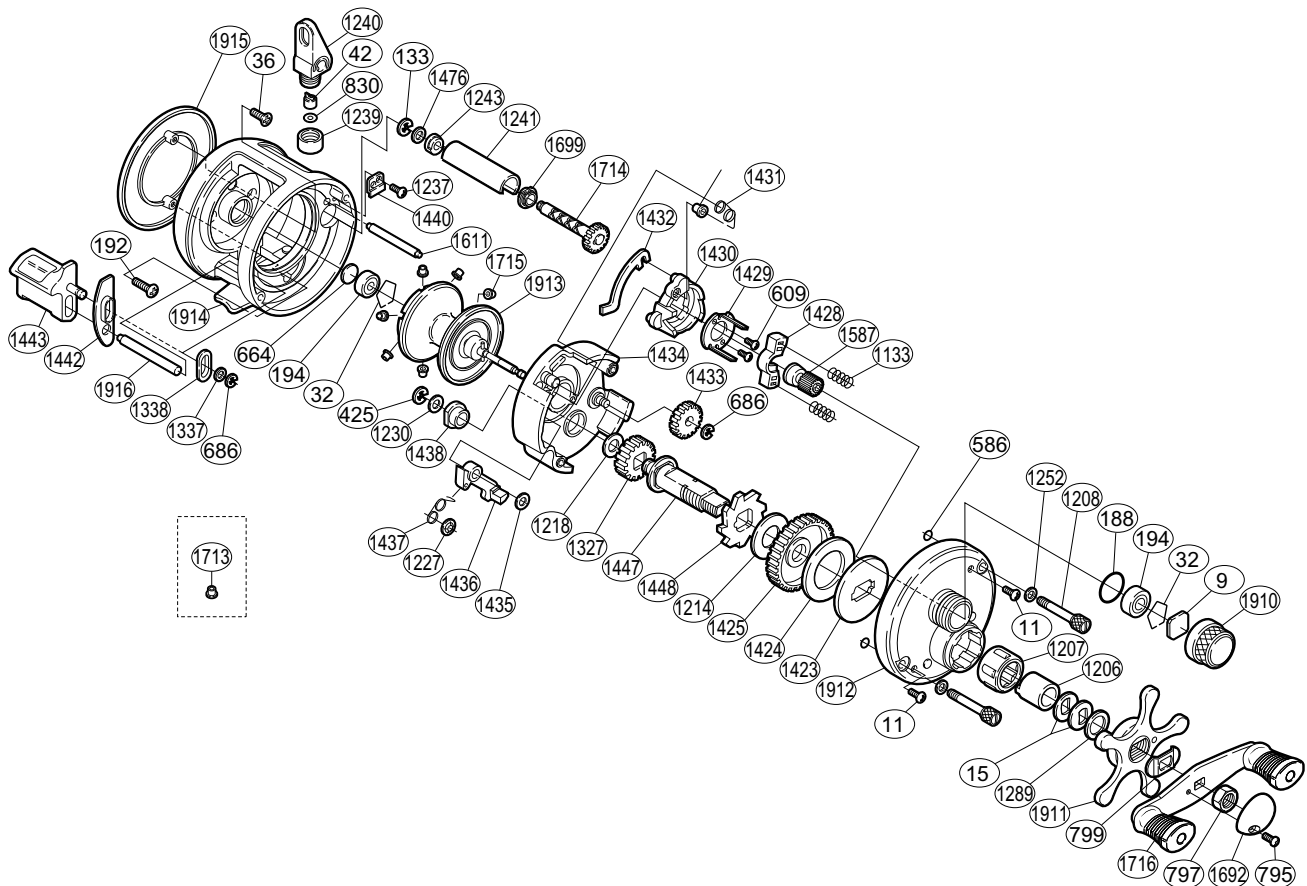


# SHIMANO®

## CALCUTTA®

CT-150



Part No.	Description	Part No.	Description	Part No.	Description
BNT0009	Cast Control Spacer	BNT1218	Idle Gear (A) Spacer	BNT1437	Clutch Pawl Spring
BNT0011	Right Side Plate Screw	BNT1227	Clutch Pawl Spring Retainer	BNT1438	Drive Shaft Bushing
BNT0015	Drag Spring Washer	BNT1230	Drive Shaft Spacer	BNT1440	Worm Bushing (A) Retainer
BNT0032	Bearing Retainer	BNT1237	Worm Bushing (A) Retainer Screw	BNT1442	Clutch Bar Guide (B)
BNT0036	Left Side Plate Screw	BNT1239	Pawl Cap	BNT1443	Quick-Fire II Clutch Bar
BNT0042	Line Guide Pawl	BNT1240	Line Guide	BNT1447	Drive Shaft
BNT0133	Worm Shaft Retainer	BNT1241	Level Wind Guard	BNT1448	Anti-Reverse Ratchet
BNT0188	"O" Ring	BNT1243	Worm Bushing (B)	BNT1476	Worm Shaft Spacer
BNT0192	Left Side Plate Screw	BNT1252	Right Side Plate Bolt Washer	BNT1587	Pinion Gear
BNT0194	Ball Bearing	BNT1289	Star Drag Spacer	BNT1611	Level Wind Guide
BNT0425	"E" Lock	BNT1327	Idle Gear	BNT1692	Handle Nut Plate
BNT0586	Bolt Retainer	BNT1337	Clutch Bar Support Spacer	BNT1699	Worm Bushing (A)
BNT0609	Clutch Cam Screw	BNT1338	Clutch Bar Guide (A)	BNT1714	Worm Shaft
BNT0664	Spacer (B)	BNT1423	Key Washer	BNT1715	Brake Collar (red)
BNT0686	Idle Gear (B) Retainer	BNT1424	Drag Washer (C)	BNT1716	Handle Assembly
BNT0795	Handle Nut Plate Screw	BNT1425	Drive Gear	BNT1910	Cast Control Cap
BNT0797	Handle Nut	BNT1428	Yoke	BNT1911	Star Drag
BNT0799	Friction Washer	BNT1429	Clutch Cam Retainer	BNT1912	Right Side Plate
BNT0830	Spacer (optional)	BNT1430	Clutch Cam	BNT1913	Spool Assembly
BNT1133	Yoke Spring	BNT1431	Retractor Spring	BNT1914	Forged One-Piece Frame
BNT1201	Retractor Spring Collar	BNT1432	Clutch Plate	BNT1915	Left Side Plate
BNT1206	Roller Clutch Inner Tube	BNT1433	Idle Gear (B)	BNT1916	Clutch Bar Support
BNT1207	Roller Clutch Bearing	BNT1434	Set Plate		
BNT1208	Right Side Plate Bolt	BNT1435	Clutch Pawl Spacer		
BNT1214	Drag Washer (A)	BNT1436	Clutch Pawl	BNT1713	Brake Collar (green)