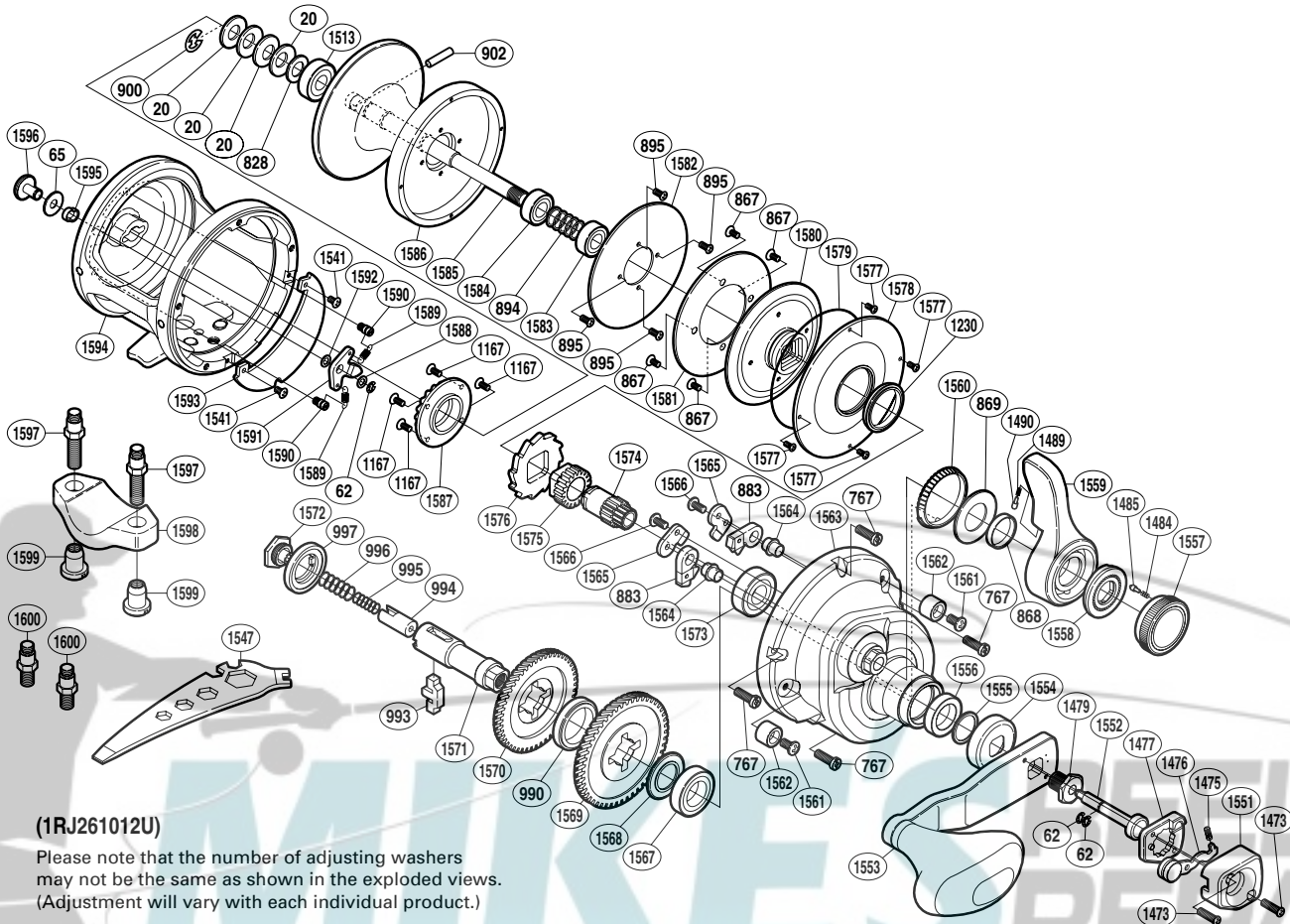


SHIMANO

TALICA SA-RB

TAC-12II



(1RJ261012U)

Please note that the number of adjusting washers may not be the same as shown in the exploded views. (Adjustment will vary with each individual product.)

| Part No. | Description | Part No. | Description | Part No. | Description |
|----------|-------------------------|----------|--------------------------|----------|------------------------------|
| TGT0020 | Coned Disc Spring | TGT1490 | Lever Click | TGT1577 | Screw |
| TGT0062 | E Lock | TGT1513 | Ball Bearing | TGT1578 | Cooling Shield |
| TGT0065 | Spacer | TGT1541 | Screw | TGT1579 | O Ring |
| TGT0767 | Screw | TGT1551 | Push Button Shield | TGT1580 | Pinion Guard |
| TGT0828 | Bearing Thrust Washer | TGT1552 | Push LOW Button Shaft | TGT1581 | Drag Plate |
| TGT0867 | Screw | TGT1553 | Handle | TGT1582 | Drag Washer |
| TGT0868 | Lever Thrust Ring | TGT1554 | Drive Shaft Shield | TGT1583 | Ball Bearing |
| TGT0869 | Washer | TGT1555 | Washer | TGT1584 | Ball Bearing |
| TGT0883 | Anti-Reverse Pawl | TGT1556 | Drive Gear Bushing | TGT1585 | Spool Shaft |
| TGT0894 | Pressure Release Spring | TGT1557 | Pre-Program Dial | TGT1586 | Spool |
| TGT0895 | Screw | TGT1558 | Lever Shaft Body | TGT1587 | Click Gear Support |
| TGT0900 | E Lock | TGT1559 | Drag Control Lever | TGT1588 | Spacer |
| TGT0902 | Cross Pin | TGT1560 | Lever Click Gear | TGT1589 | Click Pawl Spring |
| TGT0990 | Friction Washer | TGT1561 | Screw | TGT1590 | Click Spring Shaft |
| TGT0993 | Gear Select Cross Bar | TGT1562 | Bolt Shield | TGT1591 | Click Pawl |
| TGT0994 | Cross Bar Stop | TGT1563 | Right Side Plate | TGT1592 | Spacer |
| TGT0995 | Drive Shaft Spring B | TGT1564 | Anti-Reverse Pawl Pin | TGT1593 | Set Plate |
| TGT0996 | Drive Shaft Spring | TGT1565 | Anti-Reverse Pawl Keeper | TGT1594 | One-Piece Frame |
| TGT0997 | Friction Washer | TGT1566 | Screw | TGT1595 | Click Switch Cam |
| TGT1167 | Screw | TGT1567 | Ball Bearing | TGT1596 | Click Button |
| TGT1230 | Waterproof Ring | TGT1568 | Drive Gear Washer | | |
| TGT1473 | Screw | TGT1569 | Drive Gear A | | |
| TGT1475 | Slide Plate Spring | TGT1570 | Drive Gear B | | |
| TGT1476 | Slide Plate | TGT1571 | Drive Shaft | TGT1597 | Rod Clamp Bolt (accessory) |
| TGT1477 | Handle Bolt Plate | TGT1572 | Drive Shaft Screw | TGT1598 | Rod Clamp (accessory) |
| TGT1479 | Handle Bolt | TGT1573 | Ball Bearing | TGT1599 | Rod Clamp Nut (accessory) |
| TGT1484 | Click Spring | TGT1574 | Pinion Gear A | TGT1600 | Rod Clamp Bolt S (accessory) |
| TGT1485 | Click Pin | TGT1575 | Pinion Gear B | | |
| TGT1489 | Lever Click Shoe | TGT1576 | Anti-Reverse Ratchet | TGT1547 | Wrench (accessory) |