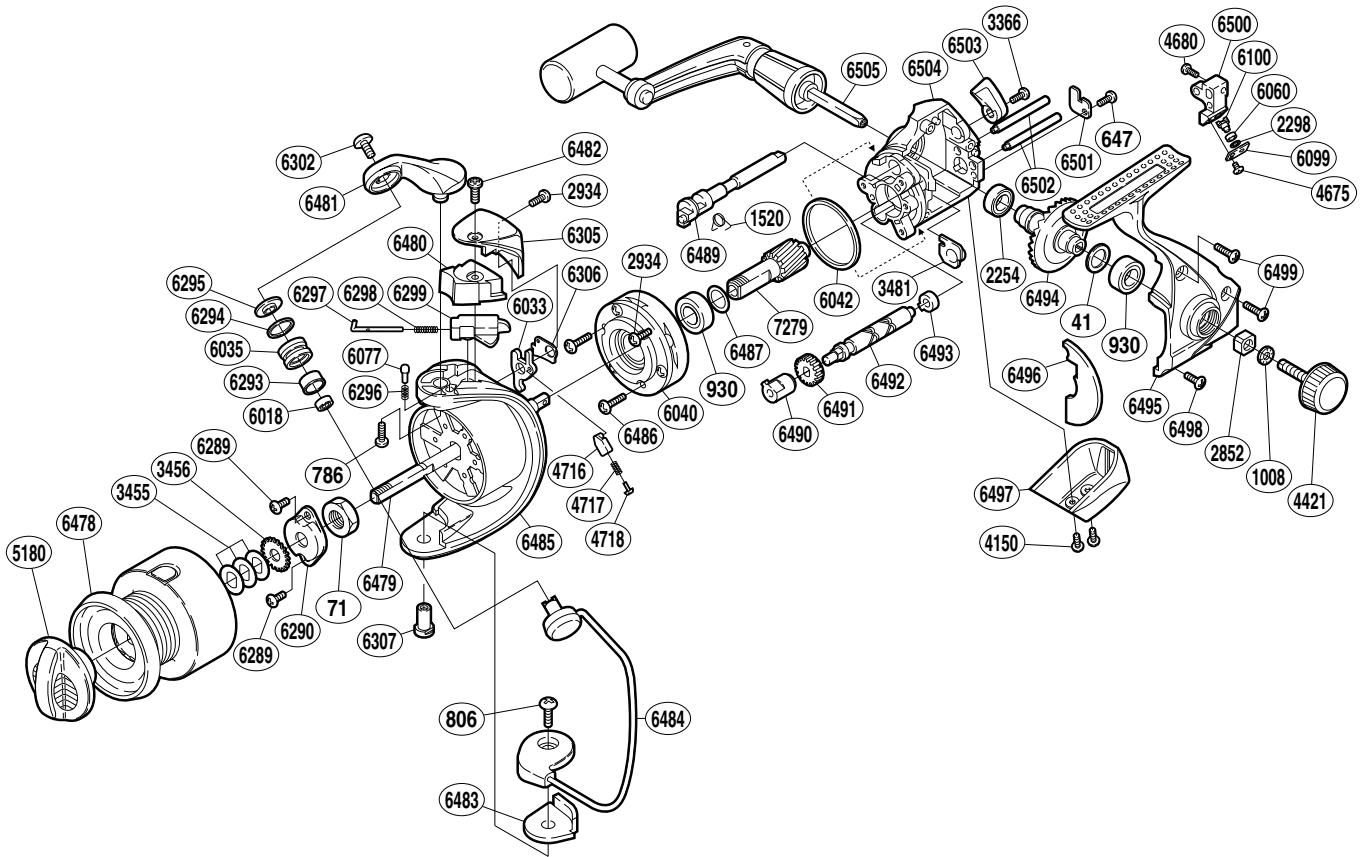


SHIMANO®

STRADIC®

ST-1000FG



Part No.	Description	Part No.	Description	Part No.	Description
RD 0041	Drive Gear Washer	RD 6033	Bail Trip Lever	RD 6482	Protector Screw
RD 0071	Rotor Nut	RD 6035	Line Roller	RD 6483	Bail Hold Support Spacer
RD 0647	Worm Shaft Retainer Screw	RD 6040	Roller Clutch Assembly	RD 6484	Bail Assembly
RD 0786	Bail Arm Screw	RD 6042	Friction Ring	RD 6485	Rotor
RD 0806	Bail Hold Support Screw	RD 6060	Oscillating Slider Bushing	RD 6486	Roller Clutch Screw
RD 0930	Ball Bearing	RD 6077	Click Pin	RD 6487	Adjusting Washer
RD 1008	Handle Lock Washer	RD 6099	Oscillating Pawl Cover	RD 6489	Anti-Reverse Cam
RD 1520	Anti-Reverse Cam Spring	RD 6100	Oscillating Pawl	RD 6490	Worm Bushing (front)
RD 2254	Ball Bearing	RD 6289	Nut Lock Screw	RD 6491	Idle Gear
RD 2298	Spacer	RD 6290	Rotor Nut Lock Plate	RD 6492	Worm Shaft
RD 2852	Handle Screw Lock	RD 6293	Line Roller Bushing	RD 6493	Worm Bushing (rear)
RD 2934	Multi-Purpose Screw	RD 6294	Line Roller Spacer	RD 6494	Drive Gear
RD 3366	Anti-Reverse Lever Screw	RD 6295	Line Roller Washer	RD 6495	Side Cover
RD 3455	Spool Washer	RD 6296	Click Spring	RD 6496	Side Cover Flange
RD 3456	Spool Support	RD 6297	Bail Spring Guide (A)	RD 6497	Rear Protector
RD 3481	Bushing	RD 6298	Bail Spring	RD 6498	Side Cover Screw (short)
RD 4150	Rear Protector Screw	RD 6299	Bail Spring Guide (B)	RD 6499	Side Cover Screw (long)
RD 4421	Handle Screw Cap	RD 6302	Line Roller Screw	RD 6500	Oscillating Slider
RD 4675	Oscillating Pawl Cover Screw	RD 6305	Rotor Protector	RD 6501	Worm Shaft Retainer
RD 4680	Slider Retainer Screw	RD 6306	Trip Lever Spacer	RD 6502	Oscillating Guide
RD 4716	Lever Spring Guide (B)	RD 6307	Bail Hold Support Shaft	RD 6503	Anti-Reverse Lever
RD 4717	Lever Spring	RD 6478	Spool Assembly	RD 6504	Body
RD 4718	Lever Spring Guide (A)	RD 6479	Main Shaft	RD 6505	Handle Assembly
RD 5180	Drag Knob	RD 6480	Bail Spring Cover	7279RD	Pinion Gear
RD 6018	Ball Bearing	RD 6481	Bail Arm		