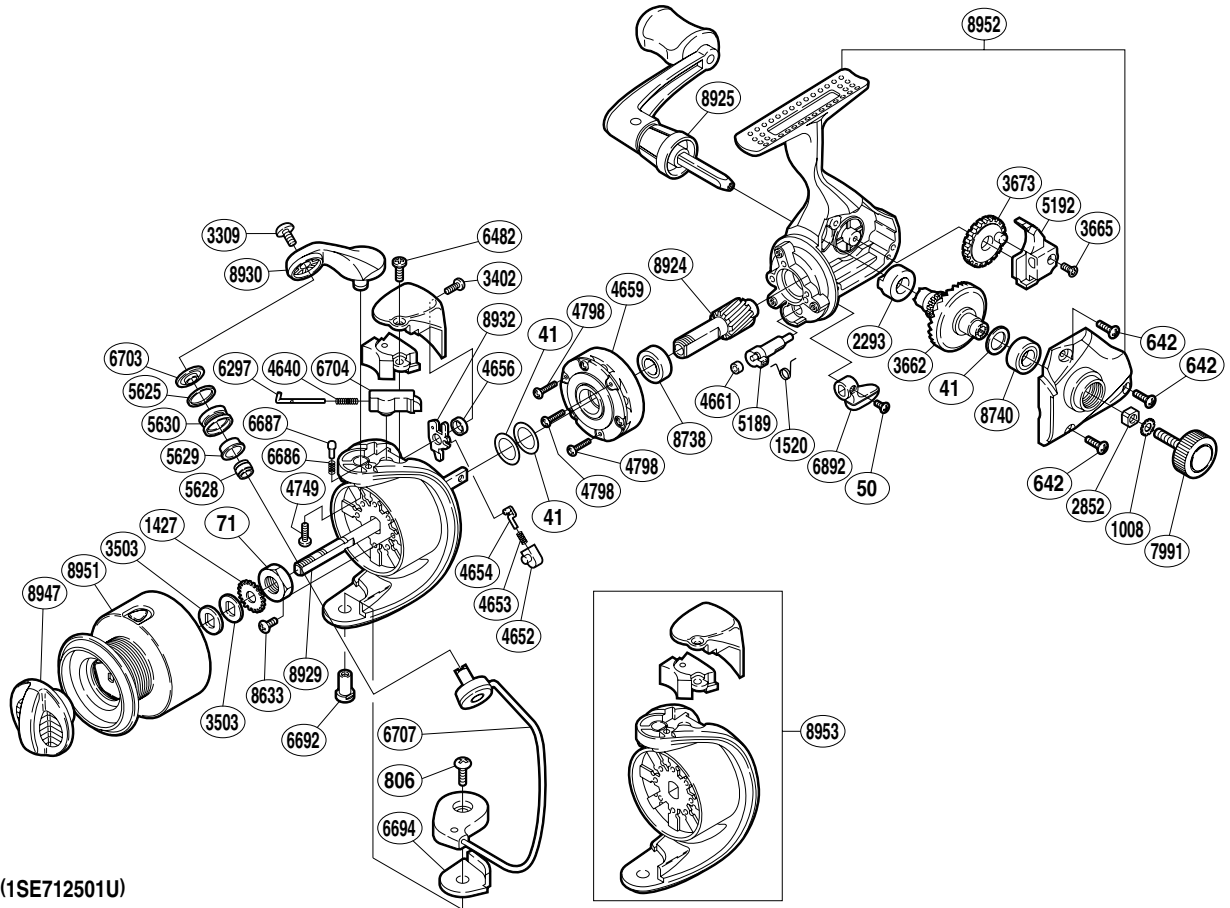


# SHIMANO®

*Sonora*™

SON-2500FA



(1SE712501U)

Part No.	Description	Part No.	Description	Part No.	Description
RD 0041	Adjusting Washer	RD 4653	Lever Spring	RD 6694	Bail Hold Support Spacer
RD 0050	Anti-Reverse Lever Screw	RD 4654	Lever Spring Guide (A)	RD 6703	Line Roller Washer
RD 0071	Rotor Nut	RD 4656	Trip Lever Spacer	RD 6704	Bail Spring Guide (B)
RD 0642	Side Cover Screw	RD 4659	Roller Clutch Assembly	RD 6707	Bail Assembly
RD 0806	Bail Hold Support Screw	RD 4661	Anti-Reverse Cam Ring	RD 6892	Anti-Reverse Lever
RD 1008	Handle Lock Washer	RD 4749	Bail Arm Screw	RD 7991	Handle Screw Cap
RD 1427	Spool Support	RD 4798	Roller Clutch Screw	RD 8633	Nut Lock Screw
RD 1520	Anti-Reverse Cam Spring	RD 5189	Anti-Reverse Cam	RD 8738	Ball Bearing
RD 2293	Drive Gear Bushing	RD 5192	Oscillating Slider	RD 8740	Ball Bearing
RD 2852	Handle Screw Lock	RD 5625	Line Roller Spacer	RD 8924	Pinion Gear
RD 3309	Line Roller Screw	RD 5628	Line Roller Collar	RD 8925	Handle Assembly
RD 3402	Bail Spring Cover Screw (B)	RD 5629	Line Roller Bushing	RD 8929	Main Shaft
RD 3503	Spool Washer	RD 5630	Line Roller	RD 8930	Bail Arm
RD 3662	Drive Gear	RD 6297	Bail Spring Guide (A)	RD 8932	Bail Trip Lever
RD 3665	Slider Retainer Screw	RD 6482	Bail Spring Cover Screw (A)	RD 8947	Drag Knob
RD 3673	Oscillating Gear	RD 6686	Click Spring	RD 8951	Spool Assembly
RD 4640	Bail Spring	RD 6687	Bail Arm Click	RD 8952	Body Assembly
RD 4652	Lever Spring Guide (B)	RD 6692	Bail Hold Support Shaft	RD 8953	Rotor Assembly