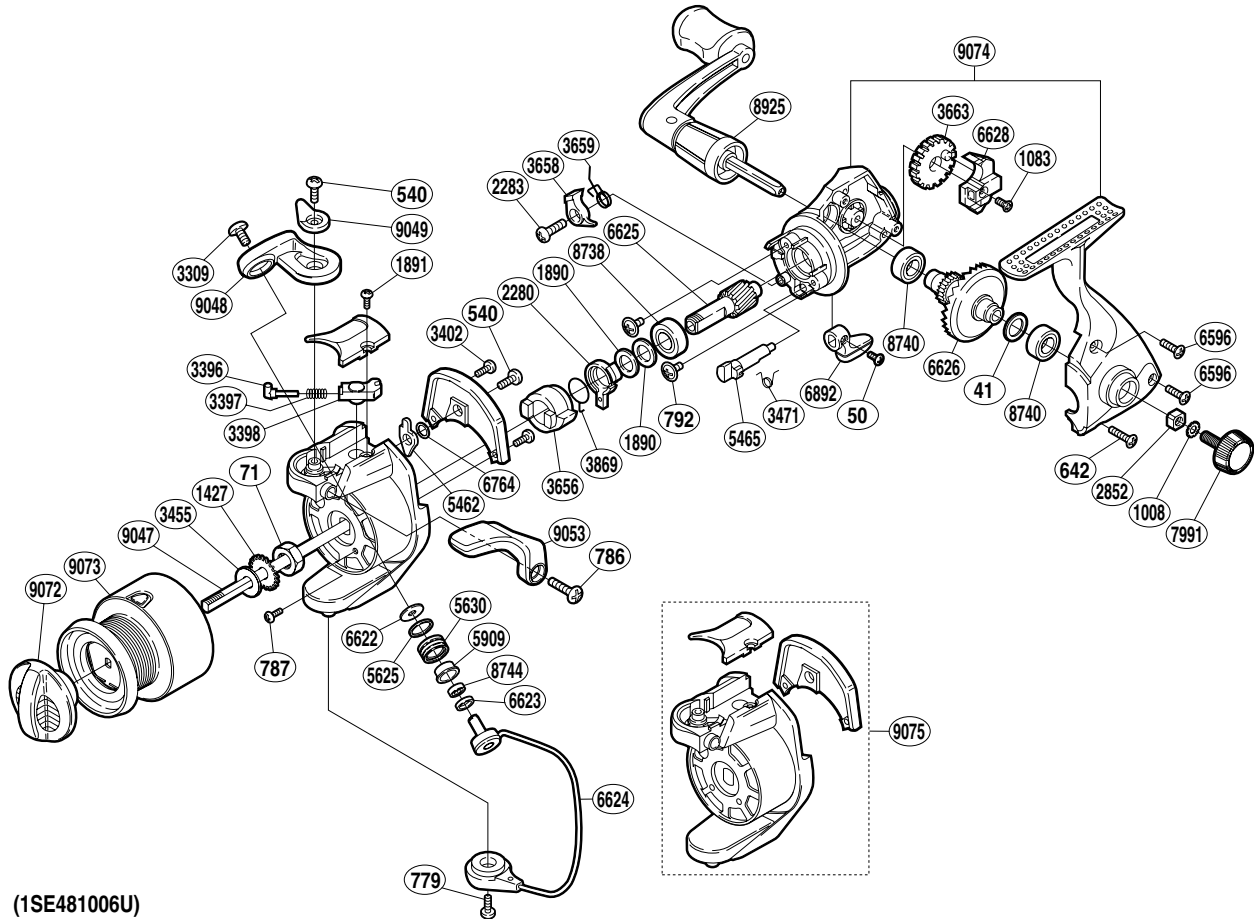


SHIMANO®

SOLSTACE

SO-1000FH



(1SE481006U)

Part No.	Description	Part No.	Description	Part No.	Description
RD 0041	Drive Gear Washer	RD 3397	Bail Spring	RD 6625	Pinion Gear
RD 0050	Anti-Reverse Lever Screw	RD 3398	Bail Spring Guide (B)	RD 6626	Drive Gear
RD 0071	Rotor Nut	RD 3402	Cover Screw	RD 6628	Oscillating Slider
RD 0540	Multi-Purpose Screw	RD 3455	Spool Washer	RD 6764	Spacer
RD 0642	Side Cover Screw (long)	RD 3471	Anti-Reverse Cam Spring	RD 6892	Anti-Reverse Lever
RD 0779	Bail Hold Support Screw	RD 3656	Anti-Reverse Ratchet	RD 7991	Handle Screw Cap
RD 0786	Trigger Screw	RD 3658	Anti-Reverse Pawl	RD 8738	Ball Bearing
RD 0787	Nut Lock Screw	RD 3659	Anti-Reverse Pawl Spring	RD 8740	Ball Bearing
RD 0792	Bearing Retainer Screw	RD 3663	Oscillating Gear	RD 8744	Ball Bearing
RD 1008	Handle Lock Washer	RD 3869	Anti-Reverse Lock Out Spring	RD 8925	Handle Assembly
RD 1083	Slider Retainer Screw	RD 5462	Bail Trip Lever	RD 9047	Main Shaft
RD 1427	Spool Support	RD 5465	Anti-Reverse Cam	RD 9048	Bail Arm
RD 1890	Bushing Washer	RD 5625	Line Roller Spacer	RD 9049	Trigger Cam
RD 1891	Bail Spring Cover Screw	RD 5630	Line Roller	RD 9053	Quick-Fire II Trigger
RD 2280	Anti-Reverse Lock Out	RD 5909	Line Roller Bushing	RD 9072	Drag Knob
RD 2283	Anti-Reverse Pawl Screw	RD 6596	Side Cover Screw (short)	RD 9073	Spool Assembly
RD 2852	Handle Screw Lock	RD 6622	Line Roller Washer	RD 9074	Body Assembly
RD 3309	Line Roller Screw	RD 6623	Bearing Spacer	RD 9075	Rotor Assembly
RD 3396	Bail Spring Guide (A)	RD 6624	Bail Assembly		