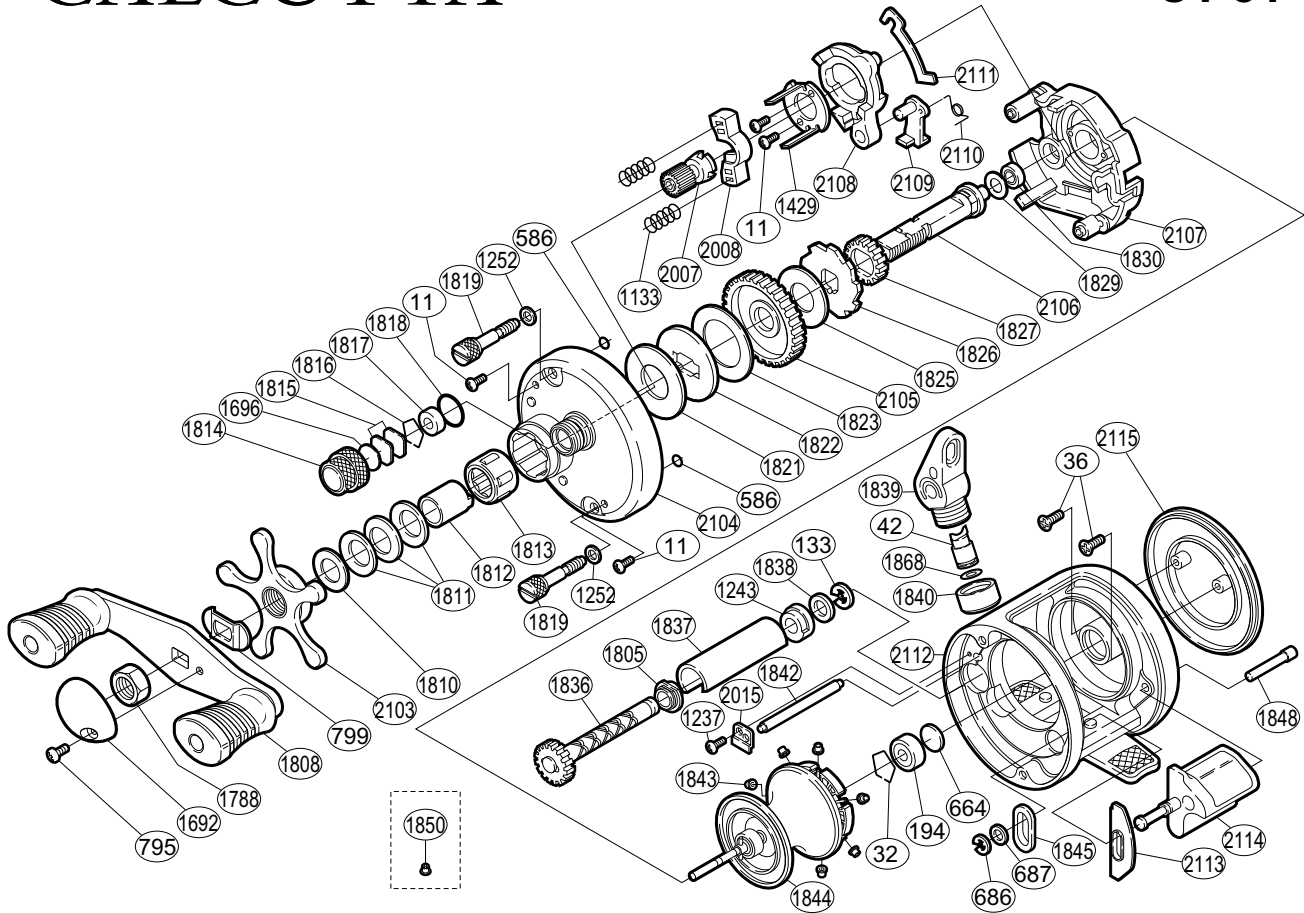


SHIMANO®

CALCUTTA®

CT-51



Part No.	Description	Part No.	Description	Part No.	Description
BNT0011	Multi-Purpose Screw	BNT1811	Coned Disc Spring	BNT1843	Brake Collar (blue)
BNT0032	Bearing Retainer	BNT1812	Roller Clutch Inner Tube	BNT1844	Spool Assembly
BNT0036	Right Side Plate Screw	BNT1813	Roller Clutch Bearing	BNT1845	Clutch Bar Guide (A)
BNT0042	Line Guide Pawl	BNT1814	Cast Control Cap	BNT1848	Clutch Bar Support
BNT0133	Worm Shaft Retainer	BNT1815	Spool Tension Spacer	BNT1868	Spacer
BNT0194	Ball Bearing	BNT1816	Bearing Retainer	BNT2007	Pinion Gear
BNT0586	Bolt Retainer	BNT1817	Spool Shaft Bushing	BNT2008	Yoke
BNT0664	Spacer (B)	BNT1818	"O" Ring	BNT2015	Worm Bushing (A) Retainer
BNT0686	"E" Lock	BNT1819	Left Side Plate Bolt	BNT2103	Star Drag
BNT0687	Clutch Bar Support Spacer	BNT1821	Drag Washer (D)	BNT2104	Left Side Plate
BNT0795	Handle Nut Plate Screw	BNT1822	Key Washer (A-2)	BNT2105	Drive Gear
BNT0799	Friction Washer	BNT1823	Drag Washer (A-2)	BNT2106	Drive Shaft
BNT1133	Yoke Spring	BNT1825	Drag Washer (A-1)	BNT2107	Set Plate
BNT1237	Worm Bushing (A) Retainer Screw	BNT1826	Anti-Reverse Ratchet	BNT2108	Clutch Cam
BNT1243	Worm Bushing (B)	BNT1827	Idle Gear (A)	BNT2109	Clutch Pawl
BNT1252	Left Side Plate Bolt Washer	BNT1829	Drive Shaft Spacer	BNT2110	Clutch Pawl Spring
BNT1429	Clutch Cam Retainer	BNT1830	Ball Bearing	BNT2111	Clutch Plate
BNT1692	Handle Nut Plate	BNT1836	Worm Shaft	BNT2112	Forged One-Piece Frame
BNT1696	Cast Control Spacer (B)	BNT1837	Level Wind Guard	BNT2113	Clutch Bar Guide (B)
BNT1788	Handle Nut	BNT1838	Worm Shaft Spacer	BNT2114	Quick-Fire II Clutch Bar
BNT1805	Worm Bushing (A)	BNT1839	Line Guide	BNT2115	Right Side Plate
BNT1808	Handle Assembly	BNT1840	Pawl Cap		
BNT1810	Star Drag Spacer	BNT1842	Level Wind Guide	BNT1850	Brake Collar (yellow)