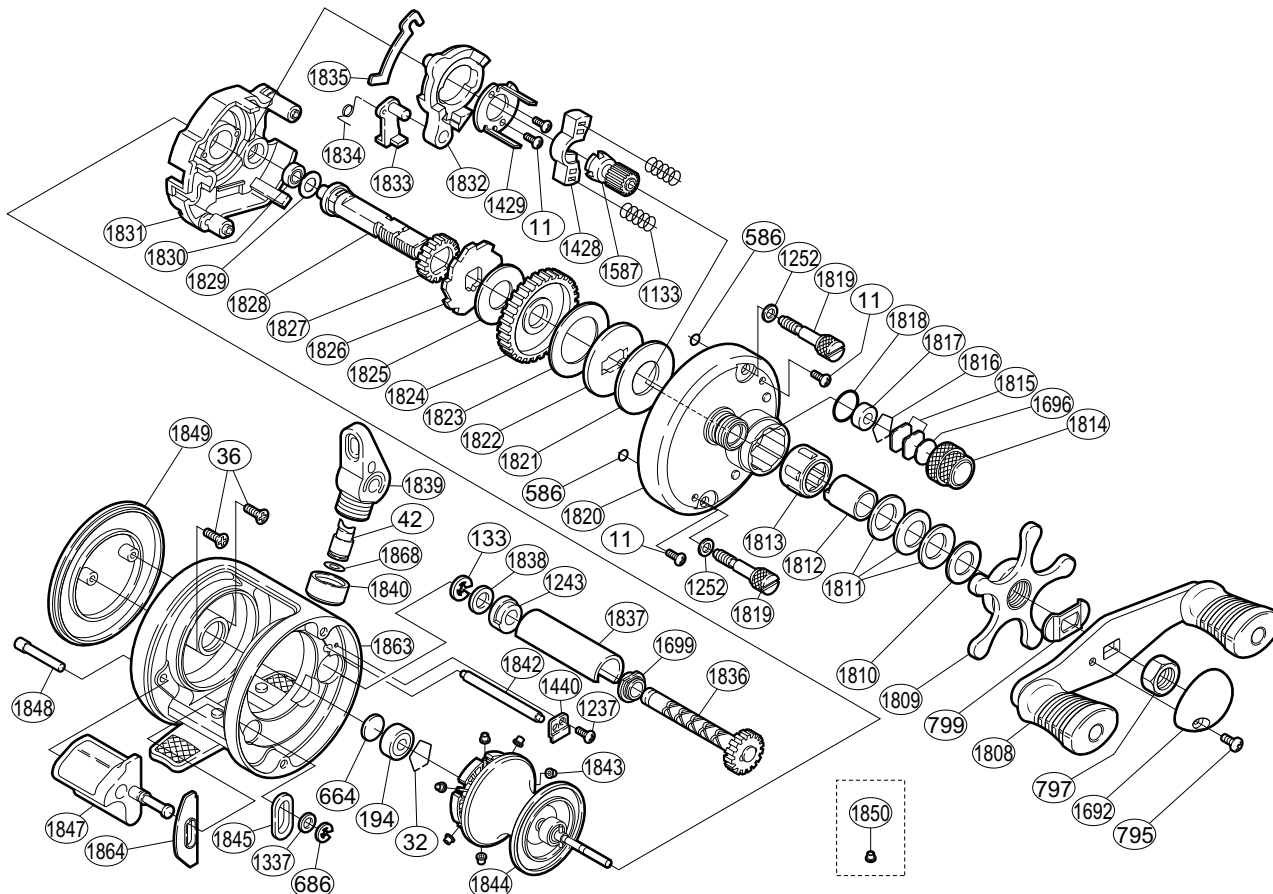


# SHIMANO®

## CALCUTTA®

CT-50



Part No.	Description	Part No.	Description	Part No.	Description
BNT0011	Multi-Purpose Screw	BNT1808	Handle Assembly	BNT1832	Clutch Cam
BNT0032	Bearing Retainer	BNT1809	Star Drag	BNT1833	Clutch Pawl
BNT0036	Left Side Plate Screw	BNT1810	Star Drag Spacer	BNT1834	Clutch Pawl Spring
BNT0042	Line Guide Pawl	BNT1811	Coned Disc Spring	BNT1835	Clutch Plate
BNT0133	Worm Shaft Retainer	BNT1812	Roller Clutch Inner Tube	BNT1836	Worm Shaft
BNT0194	Ball Bearing	BNT1813	Roller Clutch Bearing	BNT1837	Level Wind Guard
BNT0586	Bolt Retainer	BNT1814	Cast Control Cap	BNT1838	Worm Shaft Spacer
BNT0664	Spacer (B)	BNT1815	Spool Tension Spacer	BNT1839	Line Guide
BNT0686	"E" Lock	BNT1816	Bearing Retainer	BNT1840	Pawl Cap
BNT0795	Handle Nut Plate Screw	BNT1817	Spool Shaft Bushing	BNT1842	Level Wind Guide
BNT0797	Handle Nut	BNT1818	"O" Ring	BNT1843	Brake Collar (blue)
BNT0799	Friction Washer	BNT1819	Right Side Plate Bolt	BNT1844	Spool Assembly
BNT1133	Yoke Spring	BNT1820	Right Side Plate	BNT1845	Clutch Bar Guide (A)
BNT1237	Worm Bushing (A) Retainer Screw	BNT1821	Drag Washer (D)	BNT1847	Quick-Fire II Clutch Bar
BNT1243	Worm Bushing (B)	BNT1822	Key Washer (A-2)	BNT1848	Clutch Bar Support
BNT1252	Right Side Plate Bolt Washer	BNT1823	Drag Washer (A-2)	BNT1849	Left Side Plate
BNT1337	Clutch Bar Support Spacer	BNT1824	Drive Gear	BNT1863	Forged One-Piece Frame
BNT1428	Yoke	BNT1825	Drag Washer (A-1)	BNT1864	Clutch Bar Guide (B)
BNT1429	Clutch Cam Retainer	BNT1826	Anti-Reverse Ratchet	BNT1868	Spacer
BNT1440	Worm Bushing (A) Retainer	BNT1827	Idle Gear (A)		
BNT1587	Pinion Gear	BNT1828	Drive Shaft		
BNT1692	Handle Nut Plate	BNT1829	Drive Shaft Spacer		
BNT1696	Cast Control Spacer (B)	BNT1830	Ball Bearing	BNT1850	Brake Collar (yellow)
BNT1699	Worm Bushing (A)	BNT1831	Set Plate		