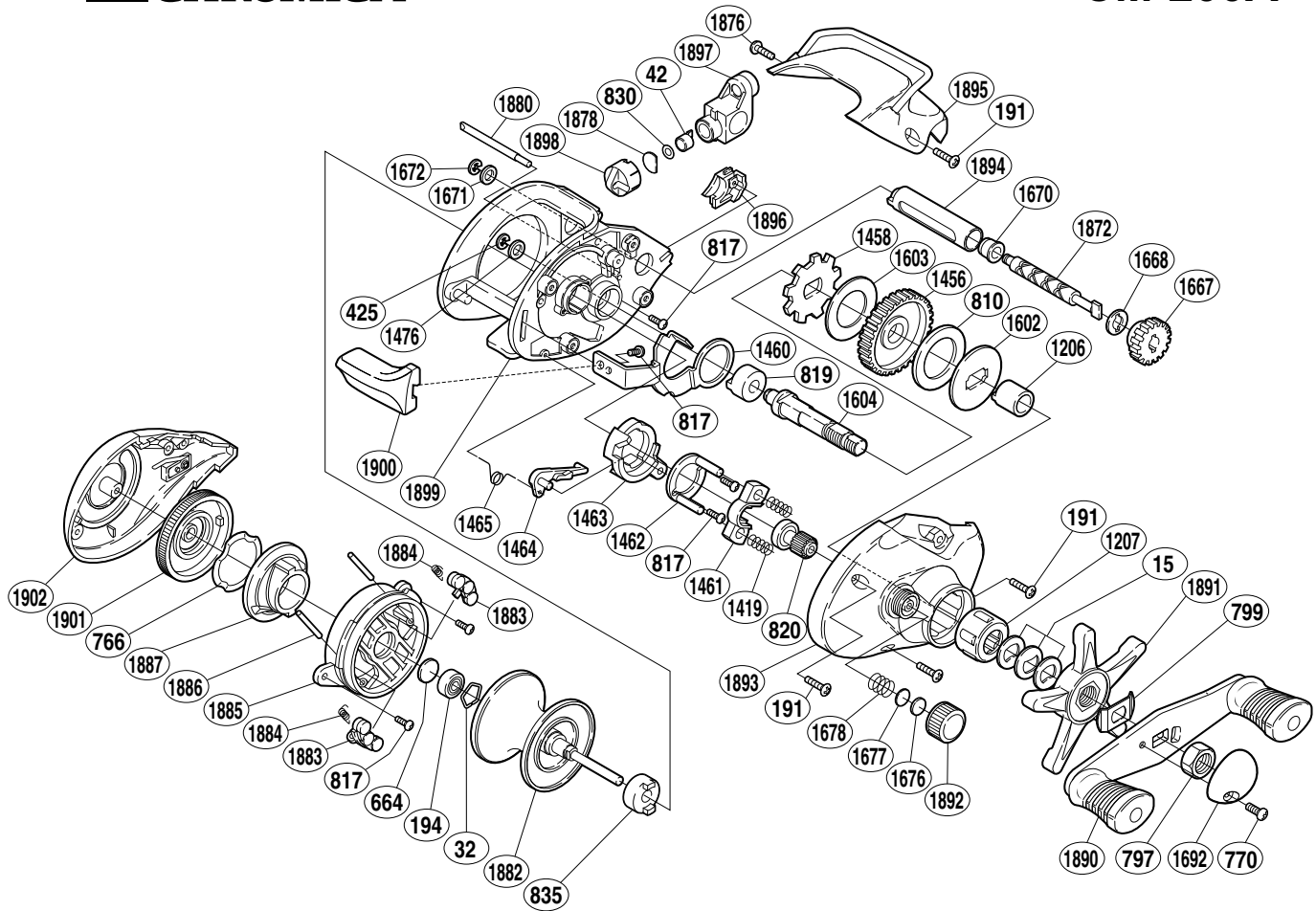


SHIMANO®

CHROMICA

CM-200A



Part No.	Description	Part No.	Description	Part No.	Description
BNT0015	Drag Spring Washer	BNT1460	Clutch Plate	BNT1880	Stabilizer Bar
BNT0032	Bearing Retainer	BNT1461	Yoke	BNT1882	Spool
BNT0042	Line Guide Pawl	BNT1462	Clutch Cam Retainer	BNT1883	Magnet Retainer
BNT0191	Multi-Purpose Screw	BNT1463	Clutch Cam	BNT1884	Magnet Retainer Spring
BNT0194	Ball Bearing	BNT1464	Clutch Pawl	BNT1885	Dial Case
BNT0425	Drive Gear Retainer	BNT1465	Clutch Pawl Spring	BNT1886	Magnet Retainer Shaft
BNT0664	Spacer (B)	BNT1476	Drive Shaft Washer (D)	BNT1887	Brake Cam
BNT0766	Dial Friction Washer	BNT1602	Key Washer	BNT1890	Handle Assembly
BNT0770	Handle Nut Plate Screw	BNT1603	Drive Shaft Washer	BNT1891	Star Drag
BNT0797	Handle Nut	BNT1604	Drive Shaft	BNT1892	Cast Control Cap
BNT0799	Friction Washer	BNT1667	Worm Gear	BNT1893	Right Side Plate
BNT0810	Drag Washer	BNT1668	Worm Shaft Washer (A)	BNT1894	Level Wind Guard
BNT0817	Multi-Purpose Screw	BNT1670	Worm Bushing	BNT1895	Thumb Rest
BNT0819	Drive Shaft Bushing	BNT1671	Worm Shaft Washer (B)	BNT1896	Drive Shaft Cover
BNT0820	Pinion Gear	BNT1672	"E" Lock	BNT1897	Line Guide
BNT0830	Spacer (optional)	BNT1676	Spool Tension Spacer (B)	BNT1898	Pawl Cap
BNT0835	Spool Shaft Bushing (B)	BNT1677	Spool Tension Spacer (A)	BNT1899	One-Piece Frame
BNT1206	Roller Clutch Inner Tube	BNT1678	Spool Tension Spring	BNT1900	Quick-Fire II Clutch Bar
BNT1207	Roller Clutch Bearing	BNT1692	Handle Nut Plate	BNT1901	Magnetic Control Dial
BNT1419	Yoke Spring	BNT1872	Worm Shaft	BNT1902	Left Side Plate
BNT1456	Drive Gear	BNT1876	Thumb Rest Screw		
BNT1458	Anti-Reverse Ratchet	BNT1878	Pawl Cap Spacer		