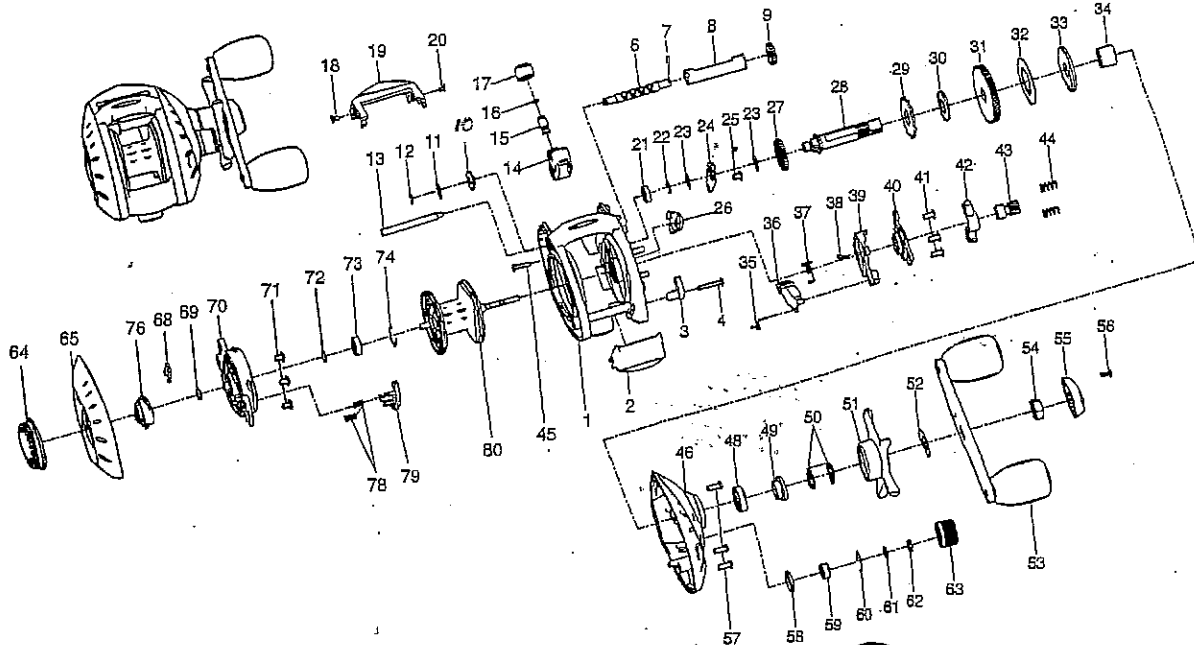


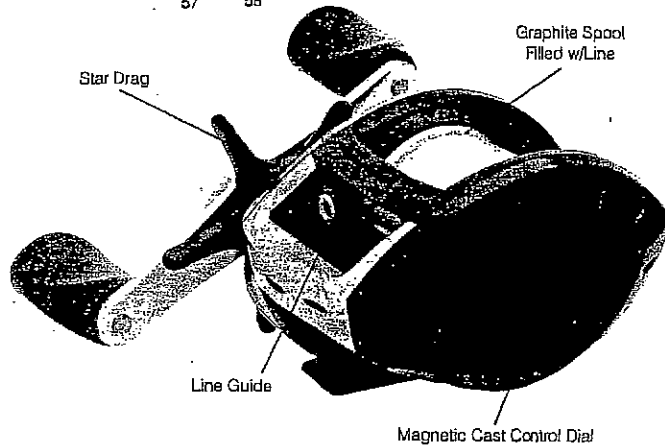
Lakespear® Baitcast Reel Parts List

For Parts and Service
 Call 1-888-404-1119
 www.mikesreelrepair.com

X T L P



Part #	Part Name
1	FRAME
2	CLUTCH BAR
3	CLUTCH LINK
4	CLUTCH BAR SCREW
6	WORM SHAFT
7	WORM SHAFT PIN - 1145950
8	LINE GUIDE PIPE
9	IDLER(S) - 1145711
10	WORM SHAFT BUSHING - 1145178
11	WORM SHAFT WASHER
12	E-RING - 1145282
13	PILLAR
14	LINE GUIDE ASSEMBLY - 1145149
15	LINE GUIDE PAWL - 1145927
16	SPACER - 1146818
17	PAWL CAP - 1145272
18	FRONT COVER SCREW-A
19	FRONT COVER
20	FRONT COVER SCREW-B
21	BUSHING
22	E-RING - 1145283
23	IDLER(L) WASHER
24	BEARING PLATE
25	BEARING PLATE SCREW
26	STOPPER ASSEMBLY
27	IDLER(L) - 1145712
28	CRANK SHAFT
29	RATCHET
30	RATCHET WASHER
31	DRIVE GEAR
32	DRAG WASHER(B)
33	DRAG WASHER(D)
34	O.W.C. SLEEVE
35	RETURN PAWL SPRING - 1146750
36	RETURN PAWL
37	CLUTCH SPRING - 1146749
38	CLUTCH SPRING BUSHING - 1145288
39	CLUTCH CAM - 1146022
40	CAM PLATE - 1146021
41	CAM PLATE SCREW
42	PINION YOKE ASSEMBLY - 1146917
43	PINION GEAR
44	PINION YOKE SPRING(2) - 1146620
45	R-COVER SCREW
46	RIGHT SIDE COVER
48	BUSHING
49	BUSHING
50	DRAG SPRING WASHER(2) - 1146895
51	STAR DRAG
52	LEAF SPRING - 1146744
53	HANDLE ASSEMBLY
54	HANDLE NUT - 1145790
55	HANDLE NUT CAP - 1145273
56	HANDLE NUT CAP SCREW - 1146215



57	R-COVER SCREW(B)
58	O-RING - 1146071
59	BUSHING
60	BEARING RETAINER - 1146066
61	SPOOL SPACER(B)
62	TENSION WASHER - 1146948
63	CAST CONTROL CAP
64	MAGNET CONTROL DIAL
65	LEFT SIDE COVER ASSEMBLY
68	LOCKING SPRING
69	O-RING
70	SPOOL COVER
71	SPOOL COVER SCREW-A (3)
72	SPOOL SPACER
73	BUSHING
74	BEARING RETAINER
76	SLIDE CAM
78	MAGNET HOLDER SPRING(2)
79	MAGNET HOLDER ASSEMBLY
80	SPOOL ASSEMBLY

REEL SPECIFICATIONS

Model #	Line Capacity	Gear Ratio	Weight	Class
X T L P	140 Yds/10# Line	-5.1:1	7.6 oz.	Medium Freshwater

124