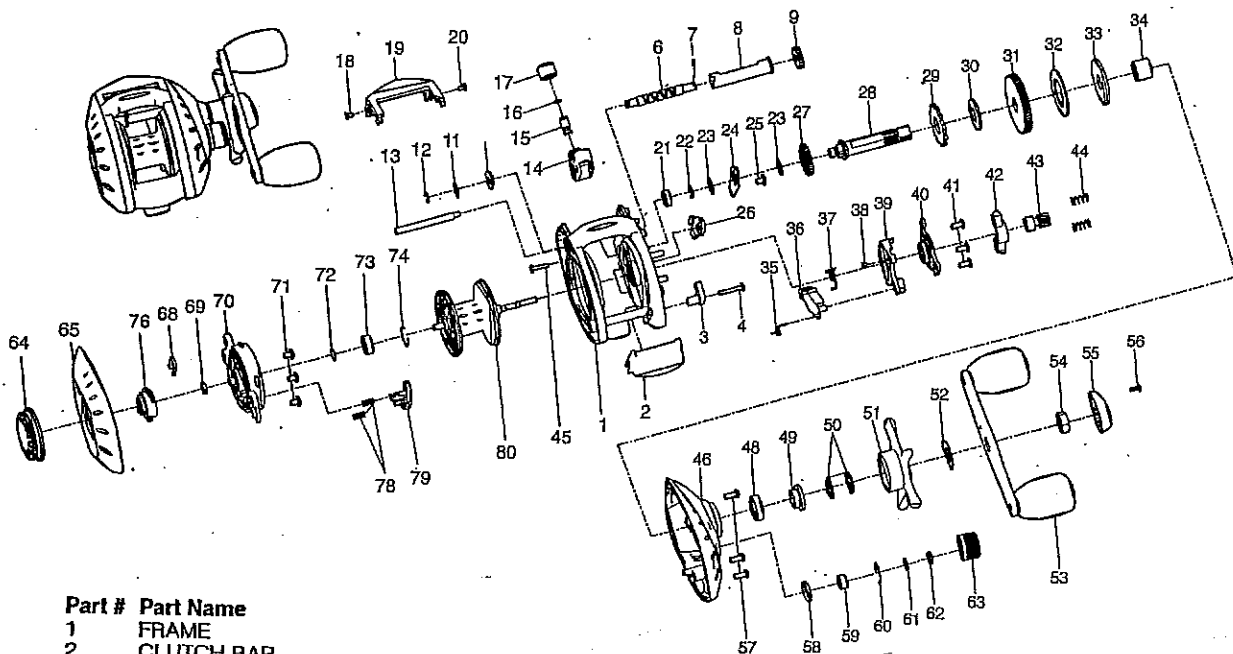


**Shakespeare® SYNERGY Baitcast Reel Parts List**

*Synergy LP*



**Part # Part Name**

- |    |                                 |    |                            |
|----|---------------------------------|----|----------------------------|
| 1  | FRAME                           | 57 | R-COVER SCREW(B)           |
| 2  | CLUTCH BAR                      | 58 | O-RING — 1146071           |
| 3  | CLUTCH LINK                     | 59 | BUSHING                    |
| 4  | CLUTCH BAR SCREW                | 60 | BEARING RETAINER — 1146066 |
| 6  | WORM SHAFT                      | 61 | SPOOL SPACER(B)            |
| 7  | WORM SHAFT PIN — 1145950        | 62 | TENSION WASHER             |
| 8  | LINE GUIDE PIPE                 | 63 | CAST CONTROL CAP           |
| 9  | IDLER(S)                        | 64 | MAGNET CONTROL DIAL        |
| 10 | WORM SHAFT BUSHING              | 65 | LEFT SIDE COVER ASSEMBLY   |
| 11 | WORM SHAFT WASHER               | 68 | LOCKING SPRING             |
| 12 | E-RING — 1145278                | 69 | O-RING                     |
| 13 | PILLAR                          | 70 | SPOOL COVER                |
| 14 | LINE GUIDE ASSEMBLY             | 71 | SPOOL COVER SCREW-A (3)    |
| 15 | LINE GUIDE PAWL                 | 72 | SPOOL SPACER               |
| 16 | SPACER                          | 73 | BUSHING                    |
| 17 | PAWL CAP                        | 74 | BEARING RETAINER           |
| 18 | FRONT COVER SCREW-A             | 76 | SLIDE CAM                  |
| 19 | FRONT COVER                     | 78 | MAGNET HOLDER SPRING(2)    |
| 20 | FRONT COVER SCREW-B             | 79 | MAGNET HOLDER ASSEMBLY     |
| 21 | BUSHING — 1145089               | 80 | SPOOL ASSEMBLY             |
| 22 | E-RING — 1145285                |    |                            |
| 23 | IDLER(L) WASHER — 1146825       |    |                            |
| 24 | BEARING PLATE                   |    |                            |
| 25 | BEARING PLATE SCREW             |    |                            |
| 26 | STOPPER ASSEMBLY                |    |                            |
| 27 | IDLER(L)                        |    |                            |
| 28 | CRANK SHAFT                     |    |                            |
| 29 | RATCHET                         |    |                            |
| 30 | RATCHET WASHER                  |    |                            |
| 31 | DRIVE GEAR                      |    |                            |
| 32 | DRAG WASHER(B)                  |    |                            |
| 33 | DRAG WASHER(D)                  |    |                            |
| 34 | O.W.C. SLEEVE                   |    |                            |
| 35 | RETURN PAWL SPRING — 1146750    |    |                            |
| 36 | RETURN PAWL                     |    |                            |
| 37 | CLUTCH SPRING                   |    |                            |
| 38 | CLUTCH SPRING BUSHING — 1145288 |    |                            |
| 39 | CLUTCH CAM                      |    |                            |
| 40 | CAM PLATE                       |    |                            |
| 41 | CAM PLATE SCREW                 |    |                            |
| 42 | PINION YOKE ASSEMBLY            |    |                            |
| 43 | PINION GEAR                     |    |                            |
| 44 | PINION YOKE SPRING(2) — 1146620 |    |                            |
| 45 | R-COVER SCREW                   |    |                            |
| 46 | RIGHT SIDE COVER                |    |                            |
| 48 | BUSHING                         |    |                            |
| 49 | BUSHING                         |    |                            |
| 50 | DRAG SPRING WASHER(2) — 1146859 |    |                            |
| 51 | STAR DRAG                       |    |                            |
| 52 | LEAF SPRING — 1146744           |    |                            |
| 53 | HANDLE ASSEMBLY                 |    |                            |
| 54 | HANDLE NUT — 1145790            |    |                            |
| 55 | HANDLE NUT CAP                  |    |                            |
| 56 | HANDLE NUT CAP SCREW            |    |                            |

Tension Knob Assy — 1146936