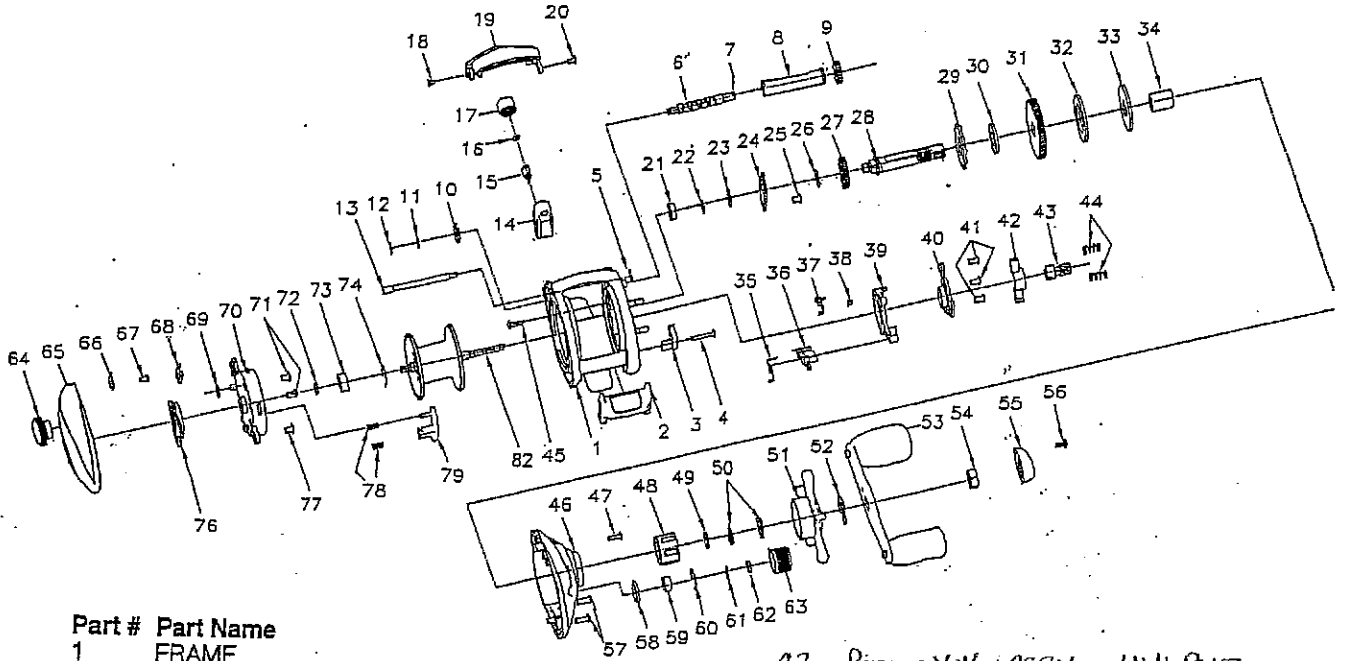


For Parts and Service
 Call 1-888-404-1119
 www.mikesreelrepair.com

Sigma Baitcast
 Older SIGMABC

Shakespeare®

SINCE 1897



- | Part # | Part Name |
|--------|--------------------------------|
| 1 | FRAME |
| 2 | CLUTCH BAR |
| 3 | CLUTCH LINK |
| 4 | CLUTCH BAR SCREW |
| 5 | E-RING |
| 6 | WORM SHAFT—1146322 |
| 7 | WORM SHAFT PIN—1145950 |
| 8 | LINE GUIDE PIPE |
| 9 | IDLER(S)—1145711 |
| 10 | WORM SHAFT BUSHING—1145178 |
| 11 | WORM SHAFT WASHER |
| 12 | E-RING—1145282 |
| 13 | PILLAR—1145947 |
| 14 | LINE GUIDE ASSEMBLY—1145149 |
| 15 | LINE GUIDE PAWL—1145924 |
| 16 | SPACER—1146818 |
| 17 | PAWL CAP—1145272 |
| 18 | FRONT COVER SCREW-A |
| 19 | FRONT COVER |
| 20 | FRONT COVER SCREW-B |
| 21 | BALL BEARING—1145089 |
| 22 | E-RING—1145283 |
| 23 | IDLER(L) WASHER |
| 24 | BEARING PLATE |
| 25 | BEARING PLATE SCREW |
| 26 | IDLER(L) WASHER—1146825 |
| 27 | IDLER(L)—1145712 |
| 28 | CRANK SHAFT |
| 29 | RATCHET |
| 30 | RATCHET WASHER |
| 31 | DRIVE GEAR |
| 32 | DRAG WASHER(B) |
| 33 | DRAG WASHER(D) |
| 34 | O.W.C. SLEEVE |
| 35 | RETURN PAWL SPRING—1146750 |
| 36 | RETURN PAWL |
| 37 | CLUTCH SPRING—1146749 |
| 38 | CLUTCH SPRING BUSHING—1145288 |
| 39 | CLUTCH CAM—1146022 |
| 40 | CAM PLATE—1146021 |
| 41 | CAM PLATE SCREW(3) |
| 42 | Pinion Yoke ASSY—1146917 |
| 43 | PINION GEAR—1146011 |
| 44 | PINION YOKE SPRING(2)—1146620 |
| 45 | R-COVER SCREW |
| 46 | RIGHT SIDE COVER |
| 47 | R-COVER SCREW(A) |
| 48 | ONE WAY CLUTCH |
| 49 | SPACER |
| 50 | DRAG SPRING WASHER(2)—1146895 |
| 51 | STAR DRAG |
| 52 | LEAF SPRING—1146744 |
| 53 | HANDLE ASSEMBLY |
| 54 | HANDLE NUT—1145790 |
| 55 | HANDLE NUT CAP |
| 56 | HANDLE NUT CAP SCREW—1146215 |
| 57 | R-COVER SCREW(B) |
| 58 | O-RING—1146071 |
| 59 | BALL BEARING—1145123 |
| 60 | BEARING RETAINER—1146066 |
| 61 | SPOOL SPACER(B) |
| 62 | TENSION WASHER |
| 63 | CAST CONTROL CAP—1146948 |
| 64 | MAGNET CONTROL DIAL |
| 65 | LEFT SIDE COVER ASSEMBLY |
| 66 | MAGNET CONTROL DIAL CLIP |
| 67 | MAGNET CONTROL DIAL CLIP SCREW |
| 68 | LOCKING SPRING |
| 69 | O-RING |
| 70 | SPOOL COVER |
| 71 | SPOOL COVER SCREW-A(2) |
| 72 | SPOOL SPACER |
| 73 | BALL BEARING—1145095 |
| 74 | BEARING RETAINER—1146064 |
| 76 | SLIDE CAM |
| 77 | SPOOL COVER SCREW-B |
| 78 | MAGNET HOLDER SPRING(2) |
| 79 | MAGNET HOLDER ASSEMBLY |
| 82 | SPOOL ASSEMBLY |
| 83 | BALL BEARING—1145131 |

(62)