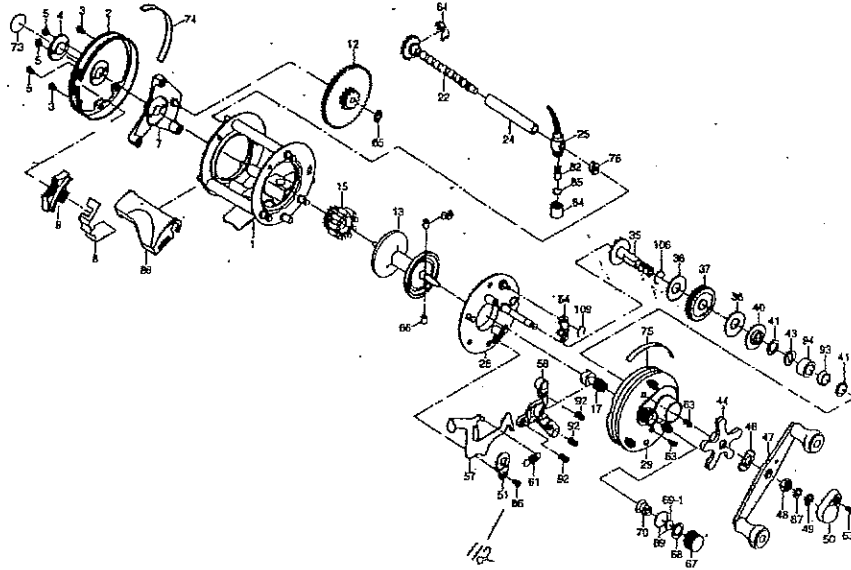


**Shakespeare**

SKP 2000 (older)  
**Baitcast Reel Parts List**

Use this parts list for ordering replacement parts for your Shakespeare Baitcast Reel. When ordering, please specify which reel you own and the model number printed on the reel body.



- | Part # | Part Name                 |
|--------|---------------------------|
| 1      | Main Body Assembly        |
| 2      | Left Side Plate           |
| 3      | Left Side Plate Screw     |
| 4      | Decal Seat                |
| 5      | Decal Seat Screw          |
| 7      | Level Wind Gear Frame     |
| 8      | Bait Clicker Spring       |
| 9      | Bait Clicker Button       |
| 12     | Level Wind Gear — 1145587 |
| 13     | Spool Assembly            |
| 15     | Level Wind Pinion Gear    |
| 17     | Pinion Gear               |
| 22     | Worm Shaft                |
| 24     | Line Guard                |
| 25     | Line Guide                |
| 28     | Right Side Plate Seat     |
| 29     | Right Side Plate          |
| 35     | Crankshaft                |
| 37     | Main Gear                 |
| 38     | Drag Friction Disc        |
| 40     | Drag Pressure Plate       |
| 41     | Drag Washer               |
| 43     | Drag Spring Washer        |
| 44     | Star Drag Handle          |
| 46     | Handle Spring Washer      |
| 47     | Crank Handle Assembly     |
| 48     | Handle Nut                |
| 49     | E-Ring — 1145286          |
| 50     | Retaining Cap             |
| 51     | Latch Keeper              |
| 54     | Anti-Reverse Pawl         |
| 57     | Thumb Latch               |

Tension Knob  
 ASSY  
 1146833

- | Part # | Part Name                            |
|--------|--------------------------------------|
| 58     | Yoke                                 |
| 61     | Latch Spring                         |
| 63     | Multi-Purpose Screw                  |
| 64     | Level Wind Retainer                  |
| 65     | E-Ring — 1145278                     |
| 66     | Centrifugal Brake Shoe               |
| 67     | Cast Control Knob — 1145217          |
| 68     | Cast Control Pressure Ring           |
| 69     | Cast Control Brass Washer — 1146844  |
| 69-1   | Cast Control Rubber Washer — 1146843 |
| 70     | Cast Control Spring — 1146710        |
| 73     | Decal                                |
| 74     | Left Side Label                      |
| 75     | Right Side Label                     |
| 78     | Bushing                              |
| 82     | Line Guide Pawl — 1145917            |
| 84     | Line Guide Pawl Cap — 1145794        |
| 85     | Washer — 1146818                     |
| 86     | Keeper Screw                         |
| 87     | Shim Washer                          |
| 88     | Thumb Rest Hood                      |
| 92     | Yoke Spring                          |
| 93     | Brass Bushing                        |
| 94     | Ball Bearing                         |
| 108    | Retaining Spring                     |
| 109    | Pawl Retaining Spring                |
| 110    | WASHER                               |
| 111    | WASHER                               |
| 112    | WASHER                               |

68