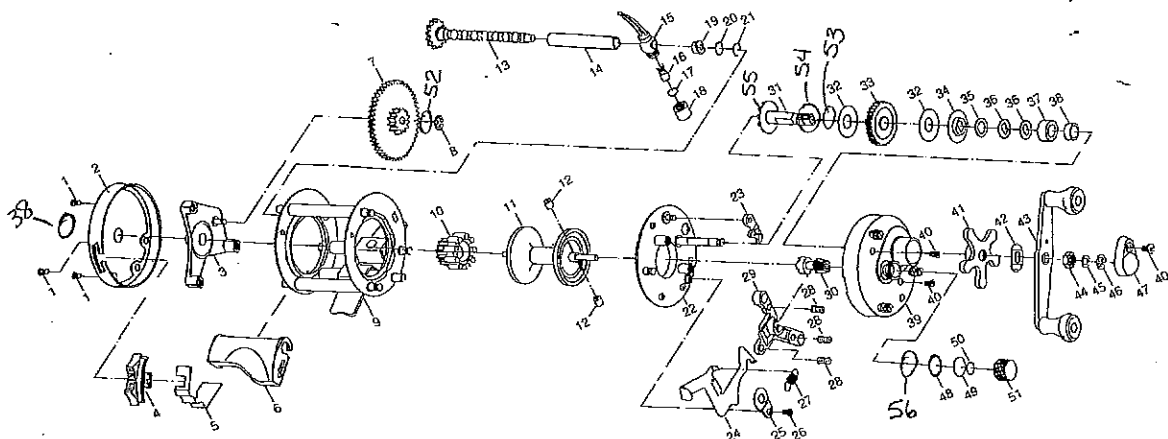


SKP 1500 *newer*

Bass Pro 2000 - SKP Warranty

Shakespeare Baitcast Reel Parts List



1	Left Side Plate Screw(3)	31	Crankshaft
2	Left Side Plate	32	Drag Friction Disc(2)
3	Level Wind Gear Frame	33	Main Gear
4	Bait Clicker Button	34	Drag Pressure Plate
5	Bait Clicker Spring	35	Drag Washer
6	Thumb Rest Hood	36	Drag Spring Washer(2)
7	Level Wind Gear	37	Ball Bearing
8	E-Ring = 1145278	38	Label
9	Main Body Assembly	39	Right Side Plate
10	Level Wind Pinion Gear	40	Screw (2)
11	Spool Assembly	41	Star Drag Handle
12	Centrifugal Brake Shoe(2)	42	Handle Spring Washer
13	Worm Shaft	43	Crank Handle Assembly
14	Line Guard	44	Handle Nut
15	Line Guide	45	Shim Washer
16	Line Guide Pawl	46	E-Ring --- 1145278
17	Yoke	47	Retaining Cap
18	Line Guide Pawl Cap --- 1145221	48	O-Ring
19	Bushing	49	Cast Cntrl Brass Washer
20	Washers (1)steel/(1)Brass	50	Cast Control Rubber Washer --- 1146846
21	Retaining Ring	51	Cast Control Knob
22	Right Side Plate Seat	52	Washer (2)
23	A/R Pawl	53	Friction Washer
24	Thumb Latch	54	Washer
25	Latch Keeper	55	Ratchet
26	Keeper Screw	56	Retaining Clip
27	Latch Spring		
28	Yoke Spring(3)		
29	Yoke		
30	Pinion Gear		

REV. 9/28/00

Model #	Line Capacity	Gear Ratio	Weight	Class
SKP 1500	300 Yds/12# Line	5.3:1	10.4 oz.	Medium Freshwater
SKP 2500	220 Yds/20# Line	5.3:1	11.2 oz.	Heavy Freshwater/Light Saltwater

67