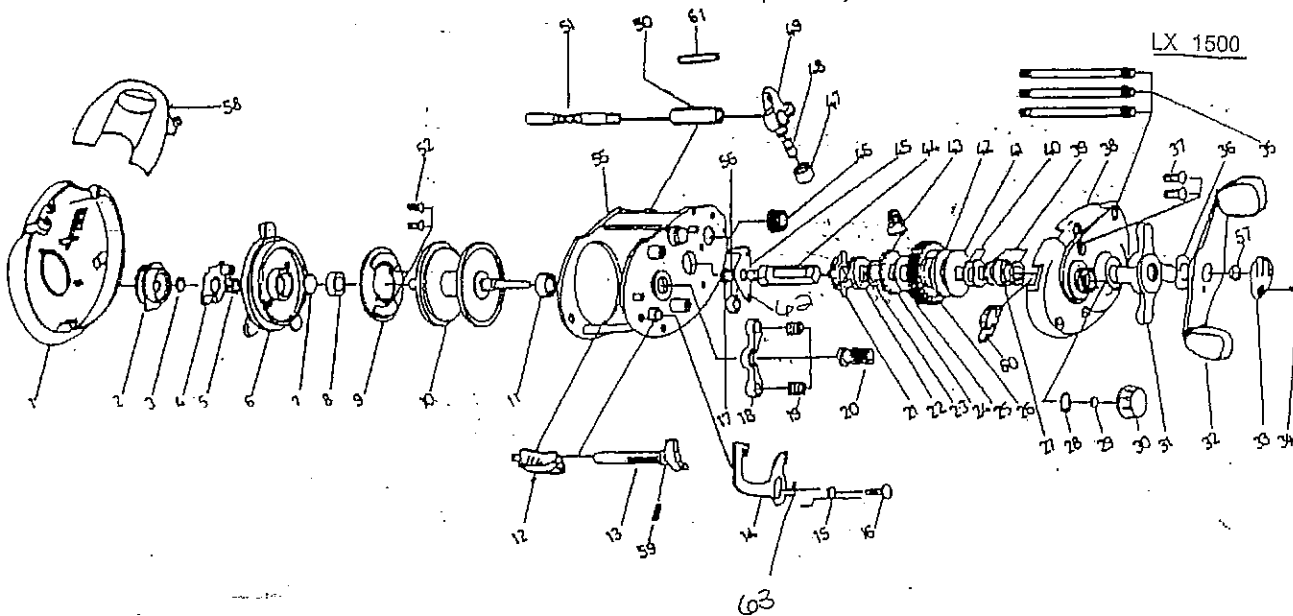


LX 1500



- | KEY | DESCRIPTION |
|-----|-------------------------------|
| 1 | Left Side Cover |
| 2 | Control Dial |
| 3 | Dial Friction Ring |
| 4 | Slide Cam |
| 5 | Slide Cam Spring |
| 6 | Spool Cover |
| 7 | Spool Tension Shim |
| 8 | Spool Cover Bushing |
| 9 | Magnet Plate Assembly |
| 10 | Spool Assembly(210) |
| 10 | Spool Assembly(212) |
| 11 | Ball Bearing |
| 12 | Thumb Bar |
| 13 | Thumb Bar Cam |
| 14 | Release Slider |
| 15 | Release Slider Spring |
| 16 | Release Slider Screw |
| 17 | E-clip |
| 18 | Pinion Yoke |
| 19 | Yoke Spring |
| 20 | Pinion Assembly |
| 21 | Star Trip Latch |
| 22 | Ring Trip Latch |
| 23 | Ratchet Washer |
| 24 | Ratchet |
| 25 | Drive Gear Washer |
| 26 | Drive Gear |
| 27 | Ball Bearing |
| 28 | Tension Knob O-Ring — 1146073 |
| 29 | Tension Knob Washer — 1146842 |
| 30 | Tension Knob — 1145214 |

- | KEY | DESCRIPTION |
|-----|-------------------------|
| 31 | Star Drag |
| 32 | Handle Assembly |
| 33 | Handle Nut Lock Cap |
| 34 | Handle Nut Lock Screw |
| 35 | Thumb Screw |
| 36 | Handle Spring Washer |
| 37 | Right Side Cover Screw |
| 38 | Right Side Cover |
| 39 | Bearing Washer |
| 40 | Spring D Washer |
| 41 | Drag Washer |
| 42 | Drag Disc Washer |
| 43 | Stopper Assembly |
| 44 | Crankshaft |
| 45 | Crankshaft Retainer |
| 46 | Oscillating Gear |
| 47 | Pawl Cap |
| 48 | Line Guide Pawl |
| 49 | Line Guide Carrier Assm |
| 50 | Carrier Guide |
| 51 | Worm Shaft |
| 52 | Magnet Plate Screw |
| 55 | Frame |
| 56 | Crankshaft Bushing-B |
| 57 | Handle Nut |
| 58 | Hood (210) |
| 58 | Hood (212) |
| 59 | Thumb Bar Spring |
| 60 | Flipping Lever |
| 61 | Fixed Pin |
| 62 | Screw |
| 63 | Spring |