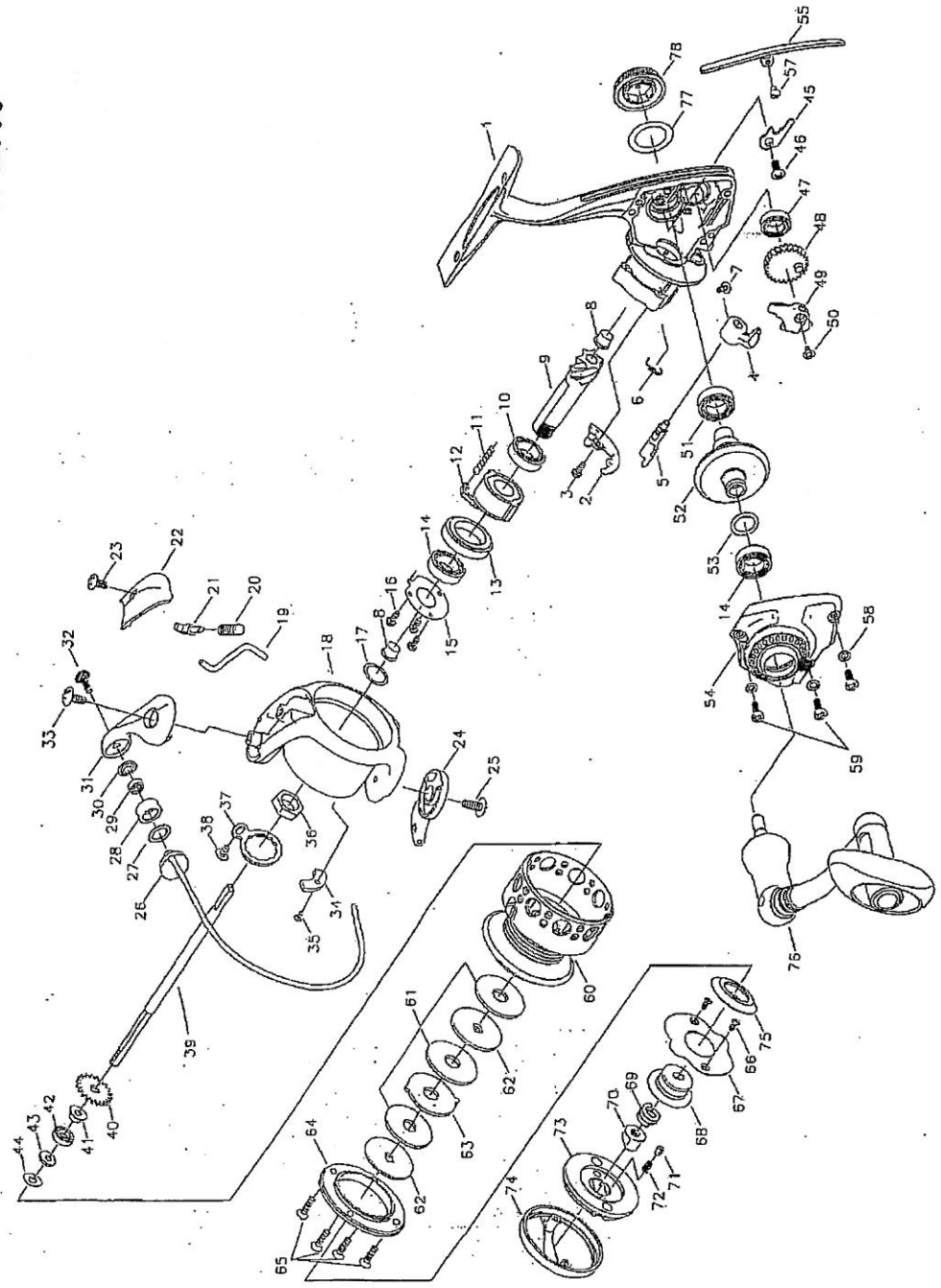


Supreme 8025mg

Use this part for ordering replacement parts for your Pflueger Spinning Reel. When ordering, please specify which reel you own and the model number printed on the reel body.

PFLUEGER SUPREME 8025MG NEW 2008



- 1 PART NAME
- 2 BODY ASSEMBLY
- 3 NUT CHM
- 4 NUT SCREW
- 5 NUT LEVER
- 6 NUT LEVER SHAFT
- 7 NUT LEVER SPRING
- 8 NUT LEVER SCREW
- 9 PINION BUSHING
- 10 PINION BALL BEARING
- 11 CLUTCH SPRING
- 12 ONE WAY CLUTCH ASSEMBLY
- 13 BEARING SLEEVE
- 14 BALL BEARING
- 15 BEARING COVER
- 16 BEARING COVER SCREW
- 17 CLUTCH WASHER
- 18 ROTOR
- 19 TRIP PLUNGER
- 20 BAIL ARM SPRING
- 21 BAIL ARM GUIDE
- 22 BAIL ARM COVER
- 23 BAIL ARM COVER SCREW
- 24 BAIL HOLDER
- 25 BAIL HOLDER SCREW
- 26 BAIL HOLDER ASSEMBLY
- 27 BAIL HOLDER WASHER
- 28 LINE ROLLER BEARING
- 29 LINE ROLLER SPACER
- 30 BAIL ARM
- 31 LINE TOLLER SCREW
- 32 COUNTER WEIGHT
- 33 COUNTER WEIGHT SCREW
- 34 COUNTER WEIGHT
- 35 ROTOR NUT
- 36 ROTOR NUT WASHER
- 37 ROTOR NUT SCREW
- 38 MAIN SHAFT
- 39 CLUTCH BEAR
- 40 SLEEVE
- 41 SPOOL BALL BEARING
- 42 MAIN SHAFT WASHER
- 43 SHEET WASHER
- 44 DIS SLIDER PLATE
- 45 PLATE SCREW
- 46 DIS GEAR BEARING
- 47 DIS GEAR
- 48 DIS SLIDER
- 49 DRIVE GEAR BEARING
- 50 DRIVE GEAR
- 51 GEAR WASHER ASSEMBLY
- 52 GEAR WASHER
- 53 REAR COVER
- 54 BODY SCREW
- 55 REAR COVER SCREW
- 56 COVER SCREW WASHER
- 57 COVER SCREW
- 58 SPOOL ASSEMBLY
- 59 DRAG WASHER
- 60 LINING WASHER
- 61 SPOOL WING
- 62 DRAG KNOB SCREW
- 63 DRAG KNOB WASHER
- 64 DRAG KNOB COVER
- 65 DRAG SPRING
- 66 DRAG NUT
- 67 DRAG CLICK PIN
- 68 DRAG CLICK SPRING
- 69 DRAG KNOB RING
- 70 DRAG SEAL
- 71 HANDLE ARM ASSEMBLY
- 72 SIDE CAP WASHER
- 73 SIDE CAP ASSEMBLY
- 74
- 75
- 76
- 77
- 78

REEL SPECIFICATIONS

Model #	Line Capacity	Gear Ratio	Weight	Class
8025MG	120 Yds/4# Line	5.2:1	6.5 oz.	ULTRALIGHT