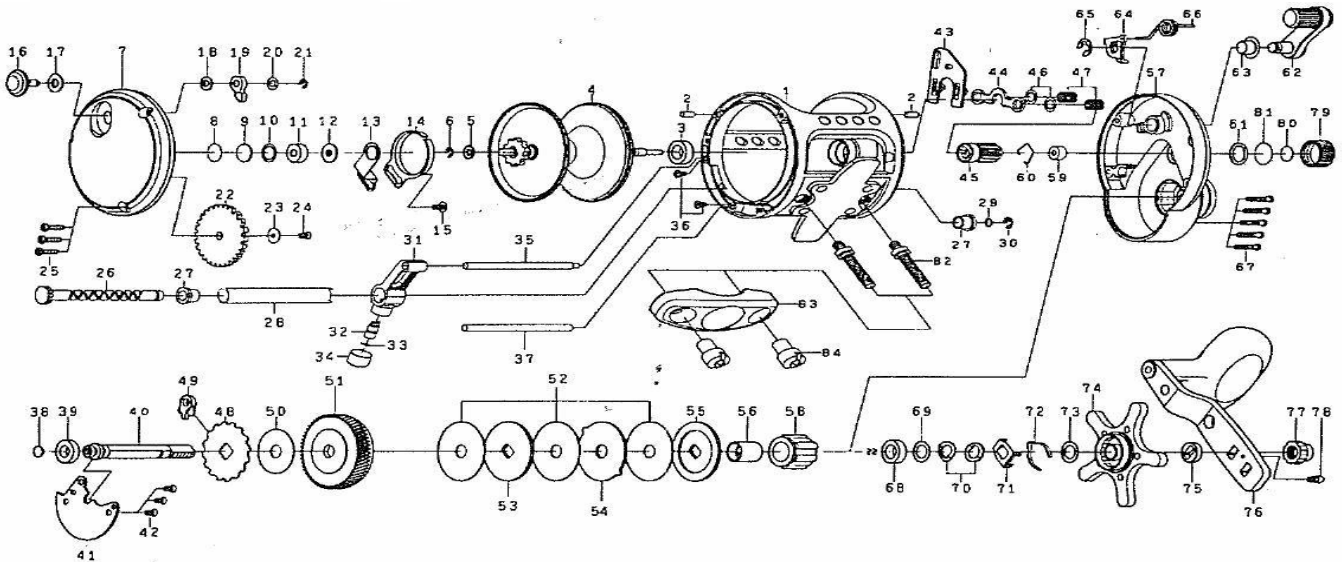


Please order by parts number, not key number  
 Veuillez indiquer le numéro de la pièce (Non "Key" No.)



CONVENTIONAL REEL

# SALTIST LW40A·LW50A



Key No.	Parts No.	Parts Name	Key No.	Parts No.	Parts Name
1	E63-1201	Frame assembly	48	G60-3901	Anti-reverse ratchet
2	G21-1701	Pin	49	E48-9001	Anti-reverse pawl
3	G42-7201	Ball bearing (A)	50	G60-4001	Drive shaft washer (B)
4	E62-7801	Spool assembly	51	E63-0301	Drive gear
5	E62-8201	Spool gear	52	E63-0401	Drag washer
6	320-1402	Spool gear retainer	53	G60-4301	Key washer (A)
7	E62-8501	Left side plate	54	G60-4401	Eared washer
8	G27-6300	Bearing washer (A)	55	E63-4501	Key washer (B)
9	G21-2401	Bearing washer (B)	56	E61-0701	Collar
10	F95-6702	Bearing washer (C)	57	E63-1501	Right side plate
11	G42-7701	Ball bearing (B)	58	E63-3301	Handle metal
12	E61-0501	Bearing washer (D)	59	E60-8801	Bushing
13	E62-8601	Click spring retainer	60	F03-2201	Bushing retainer
14	E61-0601	Click spring	61	B05-5201	"O" ring
15	351-7701	Click spring screw	62	E63-3401	Clutch lever
16	E63-4201	Click button	63	G60-5201	Clutch lever collar
17	E61-7301	Click button washer (A)	64	E61-7601	Clutch Gam
18	E61-7401	Click button washer (B)	65	320-7601	Clutch cam retainer
19	E61-1001	Click pawl	66	E61-1101	Clutch cam spring
20	373-1600	Click button washer (C)	67	E63-4301	Right side plate screw
21	320-1402	Click pawl retainer	68	G52-3403	Ball bearing (D)
22	E62-8701	Idle gear	69	E60-8901	Bearing washer (E)
23	375-3005	Idle gear washer	70	E25-3501	Drag spring washer
24	E45-4003	Idle gear screw	71	G58-8601	Click leaf spring holder
25	E62-7202	Left side plate screw	72	F03-2401	Click leaf spring
26	E62-9001	Worm shaft assembly	73	G69-4201	Washer
27	E57-3601	Worm shaft bush	74	E63-3701	Star drag
28	E62-9401	Level wind guard	75	E60-5101	Spacing sleeve
29	E62-9301	Worm shaft washer	76	E63-4101	Handle assembly
30	320-7601	Worm shaft retainer	77	G22-0301	Handle nut
31	E57-3101	Line guide assembly	78	G21-8201	Handle nut screw
32	E57-4001	Line guide pawl	79	E61-0901	Cast control cap
33	F95-0200	Line guide washer	80	B17-5503	Spacer (A)
34	E57-4101	Pawl cap	81	375-7501	Spacer (B)
35	E62-9901	Stabilizer bar (A)	82	E62-4501	Clamp bolt
36	352-0601	Stabilizer bar screw	83	E62-4401	Rod clamp
37	E63-0101	Stabilizer bar (B)	84	E62-6101	Clamp nut
38	F73-3501	Drive shaft washer (A)			
39	G27-9601	Ball bearing (C)			
40	E63-0201	Drive shaft			
41	G60-3602	Drive shaft retainer			
42	G21-2901	Drive shaft retainer screw			
43	E63-4601	Yoke plate			
44	G60-3801	Yoke			
45	G45-9701	Pinion gear			
46	E61-5101	Yoke washer			
47	F93-5201	Yoke spring			

### SALTIST LW50A SPECIAL PARTS

Key No.	Parts No.	Parts Name
1	E63-3001	Frame assembly
4	E63-2001	Spool assembly
26	E63-2301	Worm shaft assembly
28	E63-2501	Level wind guard
35	E63-2601	Stabilizer bar (A)
37	E63-2701	Stabilizer bar (B)
57	E63-3201	Right side plate