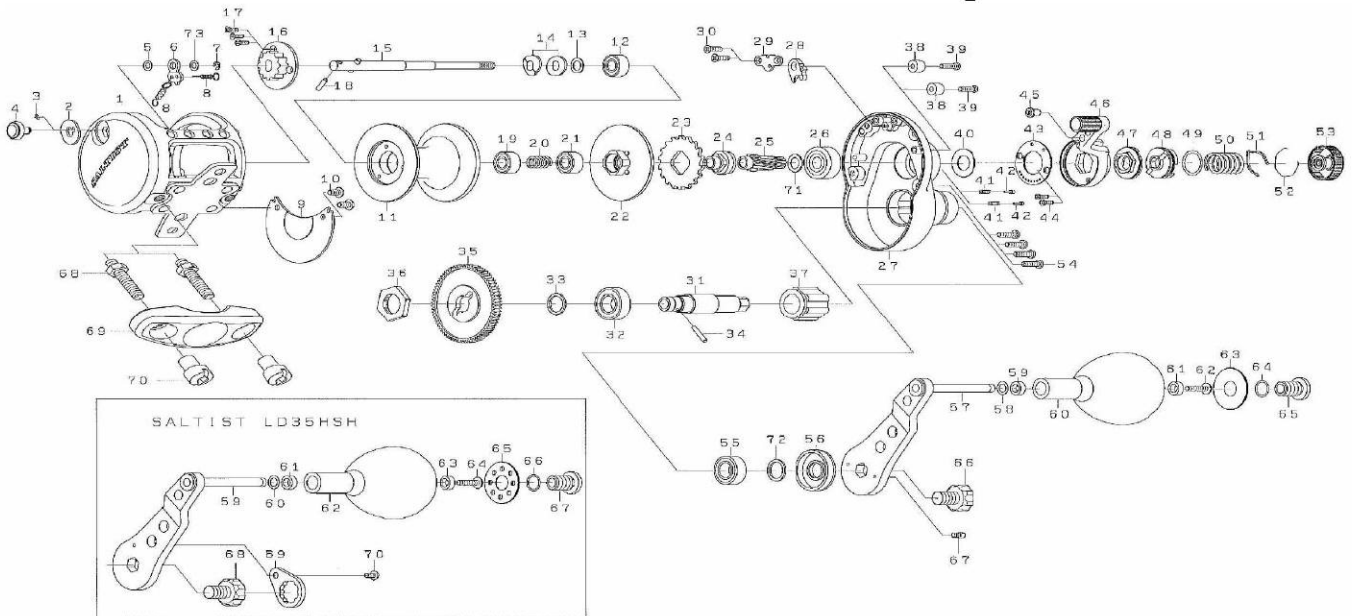




Please order by parts number, not key number
 Veuillez indiquer le numéro de la pièce (Non "Key" No.)

CONVENTIONAL REEL **SALTIST LD35H/LD35HSH**



Key No.	Parts No.	Parts Name
1	H49-9002	Frame
2	H42-0301	Click plate
3	H42-0401	Click spring (A)
4	H48-5901	Click button
5	F09-4802	Click button washer
6	H42-0501	Click pawl
7	320-1402	Click pawl retainer
8	H54-7801	Click spring (B)
9	H42-0701	Frame plate
10	F50-5703	Screw (A)
11	H49-9202	Spool
12	H42-8701	Ball bearing (A)
13	375-8500	Washer (A)
14	H51-3101	Drag spring washer
15	H49-9401	Drive shaft (A)
16	H42-1601	Drag click cap
17	G29-7001	Screw (B)
18	G32-2701	Drive shaft pin (A)
19	G53-6001	Ball bearing (B)
20	H51-2501	Spring (A)
21	G62-6301	Ball bearing (C)
22	H52-0101	Drag plate
23	H42-3401	Drag ratchet
24	H48-2101	Metal
25	H42-2801	Pinion gear
26	E17-5802	Ball bearing (D)
27	H42-1717	Right side plate
28	E48-9001	Stopper
29	H42-3501	Stopper retainer
30	G31-8503	Screw (C)
31	H43-5701	Drive shaft (B)
32	G47-2501	Ball bearing (E)
33	372-7608	Washer (C)
34	G16-3801	Drive shaft pin (B)
35	H43-5801	Drive gear
36	H43-5901	Drive shaft nut
37	F55-2703	Roller clutch
38	H42-3901	Collar (A)
39	351-7801	Screw (D)
40	H42-3801	Washer (D)
41	H53-0901	Spring (B)

Key No.	Parts No.	Parts Name
42	H53-0801	Pin (A)
43	H48-1901	Drag lever plate
44	G31-8503	Screw (E)
45	H42-4501	Pin (B)
46	H43-6101	Drag lever
47	H42-4601	Pre-set cam (A)
48	H42-4701	Pre-set cam (B)
49	171-1001	"O" ring
50	H48-4801	Drag knob spring
51	F03-2401	Click leaf spring
52	170-7701	Ring
53	H42-4801	Pre-set drag knob
54	G47-3704	Screw (F)
55	G52-2801	Ball bearing (F)
56	H42-5101	Collar (C)
57-65	H43-6201	Handle assembly
66	H33-8401	Handle nut
67	G21-8201	Handle screw
68	H45-8302	Clamp bolt
69	G38-7901	Rod clamp
70	F18-7702	Clamp nut
71	375-8500	Washer (F)
72	371-2800	Washer (G)
73	373-1600	Washer (H)

SALTIST LD35HSH Special Parts		
Key No.	Parts No.	Parts Name
11	H49-9203	Spool
25	H49-0801	Pinion gear
27	H42-1718	Right side plate
35	H49-0701	Drive gear
46	H49-0901	Drag lever
53	H42-4803	Pre-set drag knob
59-67	H49-1001	Handle assembly
68	H49-1101	Handle: nut
70	354-0801	Handle screw
59	B88-4701	Plate