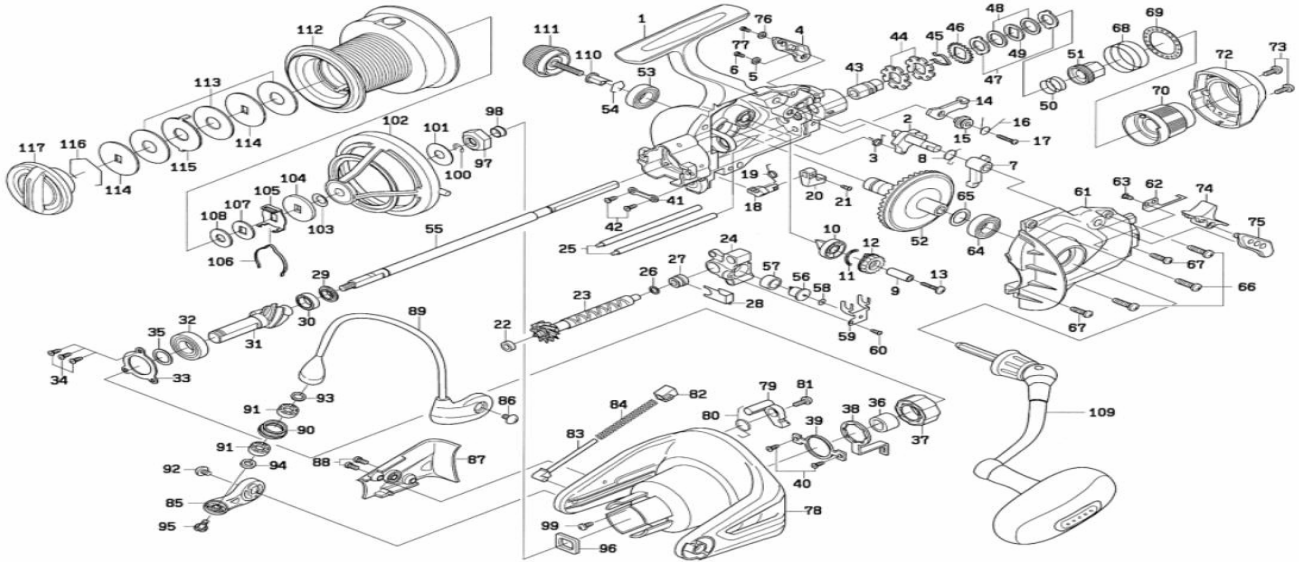


Please order by parts number, not key number
 Veuillez indiquer le numéro de la pièce (Non "Key" No.)



SEALINE BLACK 4500BRi/5500BRi



Key No.	Parts No.	Parts Name
1	H21-2301	Body
2	H04-3501	Clutch Cam (A)
3	H04-3601	Clutch Cam Spring (A)
4	H04-3702	Clutch Lever (A)
5	G09-3801	Washer (A)
6	351-7801	Screw (A)
7	H04-3801	Clutch Cam (B)
8	H04-3901	Clutch Cam Spring (B)
9	H04-4001	Collar (A)
10	H04-4101	Clutch Cam (C)
11	H04-4201	Clutch Cam Spring (C)
12	H04-4301	Gear
13	H04-4401	Screw (B)
14	H04-4501	Clutch Plate
15	H04-4601	Collar (B)
16	H04-4701	Clutch Plate Spring
17	351-5901	Screw (C)
18	H04-4801	Anti-Reverse Cam
19	H07-7901	Anti-Reverse Cam Spring
20	H04-5002	Anti-Reverse Lever
21	G69-9501	Screw (D)
22	G40-0301	Collar (F)
23	H04-5101	Worm Shaft
24	H04-5401	Oscillating Stider
25	H04-5601	Guide Shaft
26	B41-1700	Washer (B)
27	G38-9901	Collar (C)
28	H04-5701	Worm Shaft Retainer
29	H04-4901	Collar (D)
30	C43-1002	Ball Bearing (B)
31	H04-5801	Pinion Gear
32	G47-2501	Ball Bearing (C)
33	H04-5901	Bearing Retainer (A)
34	H06-6501	Screw (E)
35	G10-6501	Washer (C)
36	G08-8201	Spacing Sleeve
37	G31-4501	Roller Clutch
38	H04-6001	Anti-Reverse Plate
39	H04-6101	Roller Clutch Retainer (A)
40	H06-6501	Screw (F)
41	H04-6201	Roller Clutch Retainer (B)
42	H06-6501	Screw (G)
43	H04-6301	Tension Shaft
44	H04-6401	Clutch Ratchet
45	H12-9001	Tension Shaft Spring
46	H04-6601	Click Plate
47	H04-6701	Eared Washer (A)
48	H04-6801	Drag Washer (A)
49	H04-6901	Key Washer (A)
50	H05-9101	Tension Spring
51	H04-7001	Tension Metal
52	H04-7101	Drive Gear
53	G52-2801	Ball Bearing (D)
54	H04-7201	Bearing Retainer (B)
55	H04-7301	Main Shaft
56	G73-9001	Oscillating Pawl
57	H04-7401	Collar (E)
58	375-0800	Washer (D)
59	H04-7501	Oscillating Pawl Retainer
60	G69-9501	Screw (H)

Key No.	Parts No.	Parts Name
61	H04-7703	Side Cover
62	H04-7801	Click Pawl
63	H04-7901	Screw (I)
64	G52-2801	Ball Bearing (E)
65	371-2800	Washer (E)
66	H05-9202	Screw (J)
67	H05-9301	Screw (K)
68	H04-8001	Drag Click Spring
69	H04-8101	Drag Click Plate
70	H12-5501	Drag Knob (A)
72	H04-8402	Rear Cover
73	H04-8501	Screw (L)
74	H13-6802	Clutch Lever Bridge
75	H04-8702	Clutch Lever (B)
76	G09-3801	Washer (F)
77	351-7801	Screw (M)
78	H04-8902	Rotor
79	H04-9001	Bail Trip Lever
80	H04-9101	Bail Trip Lever Spring
81	H04-9201	Screw (N)
82	G09-1801	Bail Spring Holder
83	H20-3901	Bail Spring Shaft
84	H15-3401	Bail Spring
85	H04-9302	Bail Arm
86	G45-5601	Screw (O)
87	H04-9402	Cover (A)
88	G20-5101	Screw (P)
89	H21-2601	Bail Assembly
90	G74-0402	Line Roller
91	H03-5501	Collar (G)
92	G45-5602	Screw (S)
93	E09-6500	Washer (G)
94	H04-9901	Collar (H)
95	F60-8902	Screw (Q)
96	G39-2201	Rotor Nut Holding Plate
97	H05-0001	Rotor Nut
98	H05-0101	Collar (I)
99	G17-1402	Screw (R)
100	320-1611	Line Guard Retainer
101	G40-8301	Washer (H)
102	H21-2701	Line Guard
103	G87-8201	Line Guard Spring Washer
104	H05-0401	Washer (I)
105	H05-0601	Click Leal Spring Holder
106	F70-4902	Spool Click Leaf Spring
107	F04-3402	Washer (J)
108	E39-9200	Washer (K)
109	H21-2801	Handle Assembly
110	F40-9001	Collar (J)
111	H05-1302	Handle Screw
112-116	H21-2901	Spool Assembly
113	F75-5501	Drag Washer (B)
114	F88-1702	Key Washer (B)
115	F75-5701	Eared Washer (B)
116	F88-4001	Drag Washer Retainer
117	H09-0001	Drag Knob (B)

SEALINE BLACK 5500BRi SPECIAL PARTS

Key No.	Parts No.	Parts Name
112-116	H21-3101	Spool Assembly