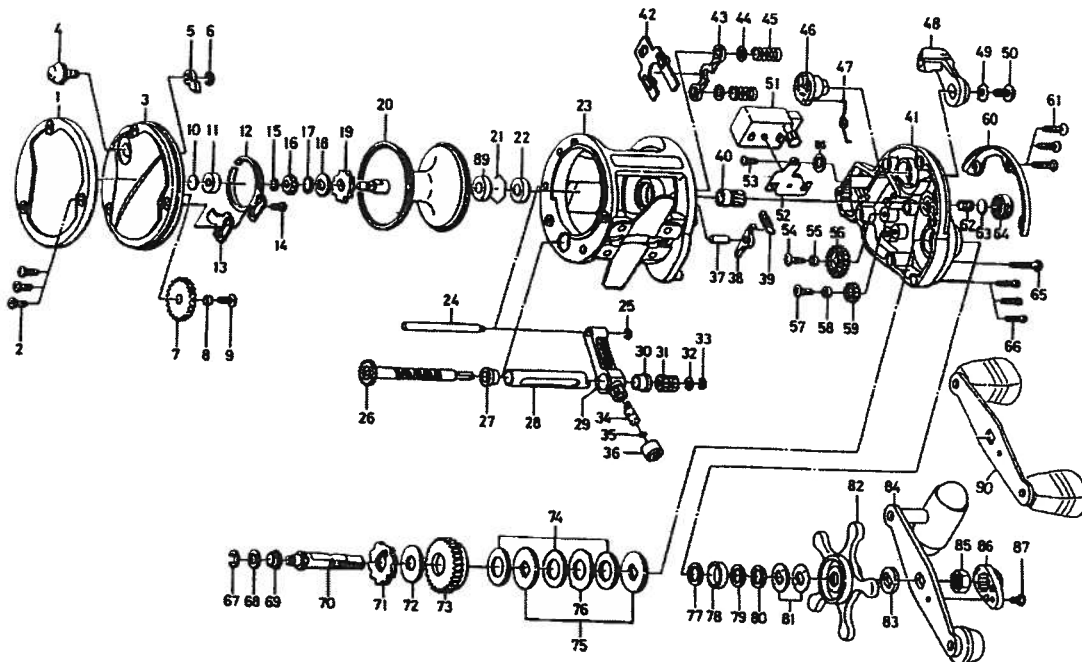


# CONVENTIONAL REEL SEALINE SG27LCA / 27LCA-W / 47LCA



| Key No. | Parts No. | Parts Name               |
|---------|-----------|--------------------------|
| 1       | F09-3901  | L/S OUTER RING           |
| 2       | F09-3601  | L/S PLT SCREW            |
| 3       | F09-3703  | L/S PLT                  |
| 4       | B21-6602  | CLICK BUTTON             |
| 5       | 030-6611  | CLICK PAWL               |
| 6       | 320-1402  | CLICK PAWL RET           |
| 7       | B21-5801  | IDLE GEAR                |
| 8       | B65-6201  | IDLE GEAR COLLAR         |
| 9       | E10-7401  | IDLE GEAR SCREW          |
| 10      | 375-7405  | BALL BEARING WASHER      |
| 11      | 637-2102  | BALL BEARING A           |
| 12      | 160-7922  | CLICK SPRING             |
| 13      | B21-5501  | CLICK SPRING RET         |
| 14      | B83-4402  | CLICK SPRING SCREW       |
| 15      | 320-8002  | SPOOL GEAR RET RING      |
| 16      | 403-2901  | SPOOL GEAR               |
| 17      | E15-4801  | CLICK LEVER WASHER       |
| 18      | E36-1402  | CLICK SPRING WASHER      |
| 19      | B21-6701  | CLICK GEAR               |
| 20      | G38-7201  | SPOOL                    |
| 21      | B27-0501  | BEARING RET              |
| 22      | F07-8301  | BUSHING A                |
| 23      | G23-7801  | FRAME                    |
| 24      | F09-3001  | STABILIZER BAR           |
| 25      | 320-5901  | STABILIZER BAR RET       |
| 26      | F09-2601  | WORM SHAFT               |
| 27      | E14-4801  | WORM BEARING             |
| 28      | F09-2801  | LEVEL WIND GUARD         |
| 29      | E36-2401  | LINE GUIDE               |
| 30      | E14-4801  | WORM BEARING             |
| 31      | F09-2901  | COUNTER GEAR             |
| 32      | B41-1702  | WORM SHAFT HOLDER WASHER |
| 33      | 320-5901  | WORM SHAFT RET           |
| 34      | 122-0601  | LINE GUIDE PAWL          |
| 35      | F95-0200  | LINE GUIDE WASHER        |
| 36      | E35-4101  | PAWL CAP                 |
| 37      | E25-2301  | A/R PAWL PIN             |
| 38      | B62-6801  | A/R PAWL                 |
| 39      | E23-4201  | A/R PAWL SPRING          |
| 40      | F13-5401  | PINION GEAR              |
| 41      | F09-1705  | R/S PLT                  |
| 42      | F09-3101  | YOKE PLT                 |
| 43      | E25-9101  | YOKE                     |
| 44      | E03-7706  | YOKE WASHER              |
| 45      | F93-5201  | YOKE SPRING              |
| 46      | F09-2001  | CLUTCH CAM               |
| 47      | E32-2301  | CLUTCH SPRING            |
| 48      | E42-6802  | CLUTCH LEVER             |
| 49      | 160-8001  | CLUTCH LEVER LOCK WASHER |
| 50      | E00-7602  | CLUTCH LEVER SCREW       |
| 51      | F09-2101  | COUNTER ASSEMBLY         |
| 52      | E24-1801  | COUNTER PLT              |
| 53      | E31-6701  | COUNTER SCREW            |

| Key No. | Parts No. | Parts Name           |
|---------|-----------|----------------------|
| 54      | E10-7401  | COUNTER GEAR SCREW   |
| 55      | B65-6201  | COUNTER GEAR COLLAR  |
| 56      | E24-1901  | COUNTER GEAR A       |
| 57      | E10-7401  | COUNTER GEAR SCREW   |
| 58      | B65-6201  | COUNTER GEAR COLLAR  |
| 59      | F09-2201  | COUNTER GEAR B       |
| 60      | F09-3501  | R/S OUTER RING       |
| 61      | F09-3601  | R/S PLT SCREW A      |
| 62      | B93-9601  | SPOOL TENSION SPRING |
| 63      | 375-7405  | SPACER A             |
| 64      | B93-9702  | CAST CONTROL CAP     |
| 65      | B00-9702  | R/S PLT SCREW B      |
| 66      | E11-9601  | R/S PLT SCREW C      |
| 67      | 320-7602  | DRIVE SHAFT RET      |
| 68      | 375-5805  | DRIVE SHAFT WASHER A |
| 69      | E25-2501  | DRIVE SHAFT BUSH     |
| 70      | E25-2601  | DRIVE SHAFT          |
| 71      | E25-2801  | A/R RATCHET          |
| 72      | 374-6604  | DRIVE SHAFT WASHER B |
| 73      | F09-3401  | DRIVE GEAR           |
| 74      | E32-6501  | DRAG WASHER          |
| 75      | E20-0201  | KEY WASHER           |
| 76      | 376-3101  | EARED WASHER         |
| 77      | 373-7806  | SPACER B             |
| 78      | F05-5502  | BALL BEARING B       |
| 79      | 373-7807  | SPACER C             |
| 80      | 373-7806  | SPACER D             |
| 81      | E25-3501  | DRAG SPRING WASHER   |
| 82      | E25-3601  | STAR DRAG            |
| 83      | E25-3901  | SPACING SLEEVE       |
| 84      | F09-4102  | HANDLE               |
| 85      | B86-2101  | HANDLE NUT           |
| 86      | E44-0001  | HANDLE NUT PLT       |
| 87      | 351-1803  | HANDLE NUT PLT SCREW |
| 88      | 373-1303  | COUNTER WASHER       |
| 89      | G38-7401  | BUSHING B            |

### SPECIAL PART FOR SG27LCA-W

| Key No. | Parts No. | Parts Name |
|---------|-----------|------------|
| 90      | G41-2901  | HANDLE     |

### SPECIAL PART FOR SG47LCA

| Key No. | Parts No. | Parts Name       |
|---------|-----------|------------------|
| 3       | F09-3704  | L/S PLT          |
| 20      | G38-7601  | SPOOL            |
| 23      | G23-7901  | FRAME            |
| 24      | F09-5801  | STABILIZER BAR   |
| 26      | F09-5501  | WORM SHAFT       |
| 28      | F09-5701  | LEVEL WIND GUARD |
| 40      | F09-3201  | PINION GEAR      |
| 41      | F09-1706  | R/S PLT          |
| 89      | G38-7801  | BUSHING B        |