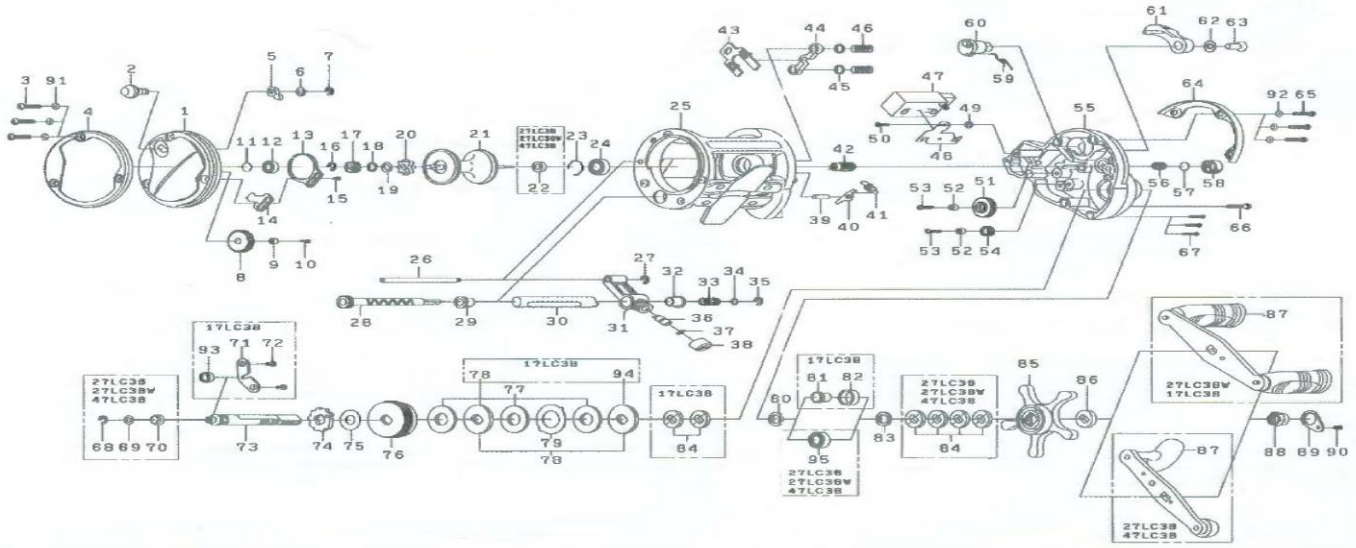


Please order by parts number, not key number  
 Veuillez indiquer le numéro de la pièce (Non "Key" No.)



# CONVENTIONAL REEL SG27LC3B/27LC3BW/47LC3B/17LC3B



| KEY NO. | PART NAME               | SG27LC3B PART NO. | SG27LC3BW PART NO. | SG47LC3B PART NO. | SG17LC3B PART NO. |
|---------|-------------------------|-------------------|--------------------|-------------------|-------------------|
| 1       | LEFT SIDE PLATE         | F09-3711          | F09-3711           | F09-3711          | E57-7105          |
| 2       | CLICK BUTTON            | B21-6602          | B21-6602           | B21-6602          | E57-7501          |
| 3       | LEFT SIDE PLATE SCREW   | G90-3601          | G90-3601           | G90-3601          | E73-6202          |
| 4       | LEFT SIDE OUTER RING    | F09-3903          | F09-3903           | F09-3903          | E57-8503          |
| 5       | CLICK PAWL              | O30-6611          | O30-6611           | O30-6611          | E47-9901          |
| 6       | WASHER(A)               | 373-1600          | 373-1600           | 373-1600          | 373-1600          |
| 7       | CLICK PAWL RETAINER     | B21-5801          | B21-5801           | B21-5801          | E57-7601          |
| 8       | IDLE GEAR               | B66-5201          | B66-5201           | B66-5201          | B66-5201          |
| 9       | IDLE GEAR COLLAR        | E10-7401          | E10-7401           | E10-7401          | E10-7401          |
| 10      | IDLE GEAR SCREW         | 375-7405          | 375-7405           | 375-7405          | 375-7405          |
| 11      | WASHER(B)               | G37-2102          | G37-2102           | G37-2102          | E57-7201          |
| 12      | CLICK SPRING            | E10-7401          | E10-7401           | E10-7401          | E10-7401          |
| 13      | CLICK SPRING RETAINER   | B21-5501          | B21-5501           | B21-5501          | E57-7301          |
| 14      | CLICK SPRING SCREW      | B53-4402          | B53-4402           | B53-4402          | B53-4402          |
| 15      | SPool GEAR RETAINER     | 320-8002          | 320-8002           | 320-8002          | 320-8002          |
| 16      | SPool GEAR              | 403-2901          | 403-2901           | 403-2901          | E57-8401          |
| 17      | WASHER(C)               | E15-4801          | E15-4801           | E15-4801          | E57-8301          |
| 18      | CLICK SPRING WASHER     | E36-1402          | E36-1402           | E36-1402          | E57-8201          |
| 19      | SPool GEAR              | B21-6701          | B21-6701           | B21-6701          | E57-8101          |
| 20      | SPool                   | E67-2901          | E67-2901           | E67-2901          | E67-4001          |
| 21      | SPool BUSHING(B)        | G38-7401          | G38-7401           | G38-7401          | -                 |
| 22      | BUSHING RETAINER        | B27-0501          | B27-0501           | B27-0501          | E57-3001          |
| 23      | BALL BEARING            | E15-2801          | E15-2801           | E15-2801          | E57-2901          |
| 24      | FRAME ASSEMBLY          | E67-2301          | E67-2301           | E67-2301          | E67-3801          |
| 25      | STABILIZER BAR          | F09-3001          | F09-3001           | F09-3001          | F09-3001          |
| 26      | STABILIZER BAR RETAINER | 320-5901          | 320-5901           | 320-5901          | 320-5901          |
| 27      | DRIVE SHAFT ASSEMBLY    | F09-2901          | F09-2901           | F09-2901          | F09-2901          |
| 28      | WORM SHAFT HOLDER(A)    | E14-4801          | E14-4801           | E14-4801          | E67-3601          |
| 29      | LEVEL WIND GUARD        | F09-2801          | F09-2801           | F09-2801          | E57-1101          |
| 30      | LINE GUIDE              | E39-3405          | E39-3405           | E39-3405          | E57-1002          |
| 31      | WORM SHAFT HOLDER(B)    | E14-4801          | E14-4801           | E14-4801          | E57-3601          |
| 32      | COUNTER GEAR(A)         | F09-2901          | F09-2901           | F09-2901          | E57-3801          |
| 33      | WORM SHAFT HOLDER       | E14-1102          | E14-1102           | E14-1102          | E57-3801          |
| 34      | WORM SHAFT RETAINER     | 320-5901          | 320-5901           | 320-5901          | 320-5901          |
| 35      | LINE GUIDE PAWL         | 1222-0601         | 1222-0601          | 1222-0601         | E57-4001          |
| 36      | LINE GUIDE WASHER       | F09-3201          | F09-3201           | F09-3201          | E57-4002          |
| 37      | PAWL CAP                | E35-4101          | E35-4101           | E35-4101          | E57-4101          |
| 38      | ANTI-REVERSE PAWL PIN   | E225-2301         | E225-2301          | E225-2301         | E57-5001          |
| 39      | ANTI-REVERSE PAWL SPR   | E225-2301         | E225-2301          | E225-2301         | E57-5001          |
| 40      | ANTI-REVERSE PAWL SPR   | E225-2301         | E225-2301          | E225-2301         | E57-5201          |
| 41      | YOKER                   | F13-5401          | F13-5401           | F13-5401          | E57-4801          |
| 42      | YOKER                   | O9-3101           | O9-3101            | O9-3101           | E57-4801          |
| 43      | YOKER WASHER            | E25-9101          | E25-9101           | E25-9101          | E57-4401          |
| 44      | YOKER SPRING            | E03-7706          | E03-7706           | E03-7706          | E57-4501          |
| 45      | COUNTER ASSEMBLY        | E33-5301          | E33-5301           | E33-5301          | E57-1801          |
| 46      | COUNTER PLATE           | F09-2101          | F09-2101           | F09-2101          | E57-1801          |
| 47      | COUNTER WASHER          | E24-1801          | E24-1801           | E24-1801          | E57-1801          |
| 48      | COUNTER SCREW           | 373-1300          | 373-1300           | 373-1300          | 373-1300          |
| 49      | COUNTER GEAR(B)         | E31-6701          | E31-6701           | E31-6701          | E31-6701          |
| 50      | COUNTER GEAR COLLAR     | E24-1901          | E24-1901           | E24-1901          | E57-2101          |
| 51      | COUNTER GEAR SCREW      | E36-6201          | E36-6201           | E36-6201          | E57-2101          |
| 52      | COUNTER GEAR(C)         | E10-7401          | E10-7401           | E10-7401          | E10-7401          |
| 53      | RIGHT SIDE PLATE        | F09-2201          | F09-2201           | F09-2201          | E57-3201          |
| 54      | SPool TENSION SPRING    | B93-9601          | B93-9601           | B93-9601          | B93-9601          |
| 55      | WASHER(D)               | 375-7405          | 375-7405           | 375-7405          | 375-7405          |
| 56      | CAST CONTROL CAP        | B93-9702          | B93-9702           | B93-9702          | B93-9702          |
| 57      | CLUTCH SPRING           | E32-2301          | E32-2301           | E32-2301          | E57-1301          |
| 58      | CLUTCH CAM              | F09-2001          | F09-2001           | F09-2001          | E57-1401          |
| 59      | CLUTCH LEVER            | E43-3805          | E43-3805           | E43-3805          | E57-1401          |
| 60      | CLUTCH LEVER LOCK WAS   | 160-8001          | 160-8001           | 160-8001          | 160-8001          |
| 61      | CLUTCH LEVER SCREW      | E00-7802          | E00-7802           | E00-7802          | E00-7802          |
| 62      | RIGHT SIDE OUTER RING   | F09-3601          | F09-3601           | F09-3601          | F09-3601          |
| 63      | RIGHT SIDE PLATE SCREW  | B00-9702          | B00-9702           | B00-9702          | F73-6202          |
| 64      | RIGHT SIDE PLATE SCREW  | E11-9601          | E11-9601           | E11-9601          | B00-8602          |
| 65      | DRIVE SHAFT RETAINER    | 320-7602          | 320-7602           | 320-7602          | C35-2302          |
| 66      | DRIVE SHAFT WASHER(A)   | 375-5805          | 375-5805           | 375-5805          | -                 |
| 67      | DRIVE SHAFT BUSHING     | E25-2501          | E25-2501           | E25-2501          | -                 |
| 68      | DRIVE SHAFT PLATE       | -                 | -                  | -                 | E57-5501          |
| 69      | DRIVE SHAFT PLATE SCRE  | -                 | -                  | -                 | E57-5601          |
| 70      | DRIVE SHAFT             | E25-2601          | E25-2601           | E25-2601          | E57-5601          |
| 71      | CLUTCH WHEEL            | E25-2801          | E25-2801           | E252801           | E57-5602          |
| 72      | DRAG SPRING WASHER(B)   | 374-6604          | 374-6604           | 374-6604          | E57-5901          |
| 73      | DRIVE SHAFT             | F09-3401          | F09-3401           | F09-3401          | E57-5901          |
| 74      | DRAG WASHER             | E32-5503          | E32-5503           | E32-5503          | E57-6102          |
| 75      | KEY WASHER(A)           | E20-0201          | E20-0201           | E20-0201          | E57-6201          |
| 76      | KEY WASHER              | E43-3101          | E43-3101           | E43-3101          | E57-6201          |
| 77      | WASHER(E)               | 373-7806          | 373-7806           | 373-7806          | E57-6501          |
| 78      | SPACING SLEEVE(A)       | -                 | -                  | -                 | E57-6601          |
| 79      | BUSHING(C)              | -                 | -                  | -                 | E57-7001          |
| 80      | WASHER(F)               | 373-7807          | 373-7807           | 373-7807          | E57-6501          |
| 81      | DRAG SPRING WASHER      | E25-3501          | E25-3501           | E25-3501          | E57-6401          |
| 82      | STAR DRAG               | E25-3901          | E25-3901           | E25-3901          | E57-5901          |
| 83      | SPACING SLEEVE(B)       | E25-3901          | E25-3901           | E25-3901          | E25-3901          |
| 84      | HANDLE ASSEMBLY         | E67-3401          | E67-3401           | E67-3401          | E57-3601          |
| 85      | HANDLE NUT              | G09-3314          | G09-3314           | G09-3314          | G09-3314          |
| 86      | HANDLE NUT PLATE        | G40-3218          | G40-3218           | G40-3218          | G40-3218          |
| 87      | BALL BEARING            | 353-8302          | 353-8302           | 353-8302          | 353-8302          |
| 88      | DRIVE SHAFT WASHING     | B85-3001          | B85-3001           | B85-3001          | B85-3001          |
| 89      | WASHER(G)               | B85-3001          | B85-3001           | B85-3001          | B85-3001          |
| 90      | WASHER(H)               | -                 | -                  | -                 | E57-6202          |
| 91      | BALL BEARING(C)         | -                 | -                  | -                 | -                 |
| 92      | KEY WASHER(B)           | -                 | -                  | -                 | -                 |
| 93      | BALL BEARING(D)         | G52-3401          | G52-3401           | G523401           | -                 |