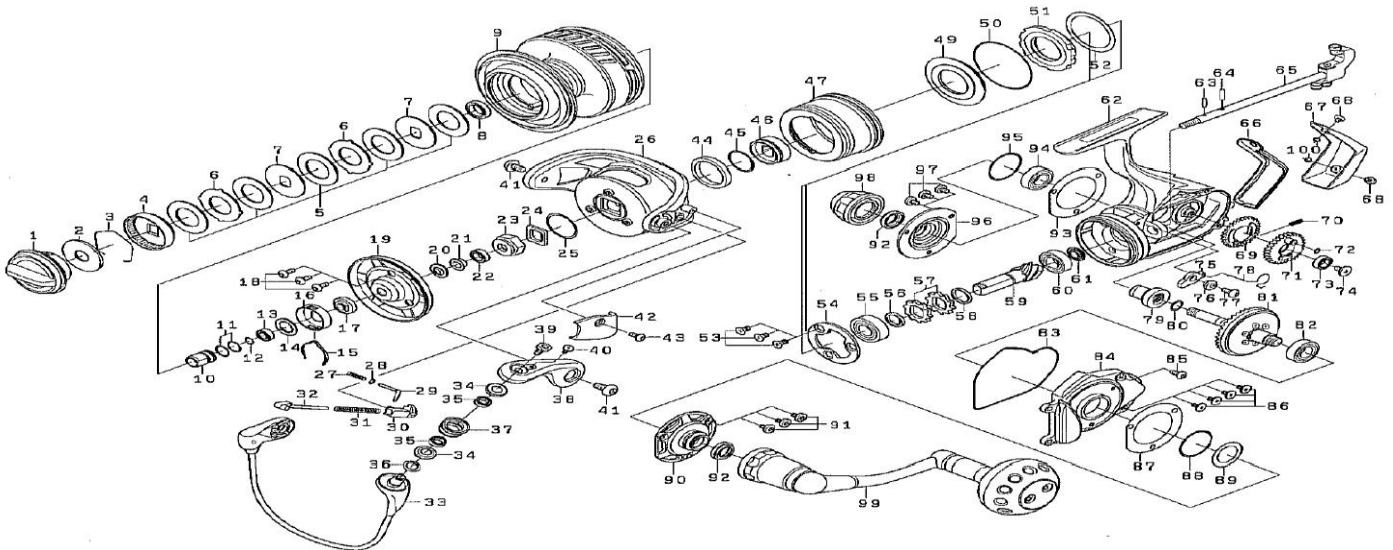


Please order by parts number, not key number
 Veuillez indiquer le numéro de la pièce (Non "Key" No.)

DAIWA
 SPINNING REEL

SALTIGA 7000HDF



Key No.	Parts No.	Parts Name	Key No.	Parts No.	Parts Name
1	H87-7501	DRAG KNOB	52	F19-7302	ONEWAY CLUTCH WASHER
2	H61-6701	DRAG KNOB WASHER	53	F20-6902	SCREW
3	F71-0001	DRAG RING	54	H50-1901	PINION BEARING(A) PLATE
4	G16-5603	DRAG RATCHET	55	G42-6301	BALL BEARING
5	H24-7202	DRAG WASHER	56	H68-3501	COLLAR
6	G16-5902	DRAG LIP WASHER	57	E26-2701	RATCHET
7	G16-2702	DRAG DISC WASHER	58	372-7603	RATCHET WASHER
8	G15-6801	BALL BEARING	59-81	Z02-0536	GEAR UN
3-9	H87-7301	SPOOL ASSY.	60	B86-1703	BALL BEARING
10	G33-9202	SPOOL METAL(A)	61	H68-3001	PINION BEARING(B) COLLAR
11	G33-9401	O-RING	62	H87-6701	BODY
12	G33-9101	O-RING	63	G33-9301	SPOOL METAL PIN
13	G31-4901	BALL BEARING	64	G33-8901	MAINSHAFT PIN
14	G34-1 500	SPOOL WASHER	65	H68-2701	MAINSHAFT
15	G34-1401	CLICK LEAF SPRING	66	H68-4301	REAR CAP PACKING
16	G34-1301	CLICK HOLDER	67	H68-4402	REAR CAP
17	G33-9001	SPOOL METAL(B)	68	G94-6802	REAR CAP SCREW
18	H50-3901	SCREW	69	G33-4901	O/S GEAR
19	H68-5701	ROTOR COVER	70	G15-7401	O/S GEAR SPRING
20	H68-5601	ROTOR PACKING	71	H68-2601	O/S GEAR
21	H68-5501	ROTOR NUT COLLAR	72	G21-3001	O-RING
22	B86-1702	BALL BEARING	73	B86-1702	BALL BEARING
23	H68-5402	ROTOR NUT	74	H34-7101	SCREW
24	H68-5301	ROTOR NUT PLATE	75	H68-3601	STOPPER
25	F27-4501	O-RING	76	G33-6201	STOPPER COLLAR
26	H68-4502	ROTOR	77	351-6413	SCREW
27	H78-2801	ROTOR BRAKE SPRING	78	G33-6601	STOPPER SPRING
28	E27-2501	ROTOR BRAKE WASHER	79	G33-4702	O/S GEAR
29	H68-4601	ROTOR BRAKE SHAFT	80	G33-6701	O/S GEAR PACKING
30	H68-4701	ARM LEVER SPRING	82	G42-6301	BALL BEARING
31	G41-8101	ARM LEVER SPRING	83	H68-3901	DRIVE BEARING PACKING
32	G33-7401	ARM LEVER SHAFT	84	H68-3804	SIDE COVER
33	H87-6901	BAIL	85	G16-0106	SCREW
34	G16-2001	ROLLER BEARING	86	H50-5201	SCREW
35	G37-0905	BALL BEARING	87	H68-2401	DRIVE BEARING COVER PLATE
36	E09-6500	ROLLER WASHER	88	H03-6301	O-RING
37	H79-4603	LINE ROLLER	89	H68-4000	DRIVE WASHER
38	H50-3604	ARM LEVER	90	H68-2502	DRIVE BEARING COVER
39	H50-4702	SCREW	91	G94-6802	SCREW
40	H84-2801	SCREW	92	H68-5801	HANDLE PACKING
41	H50-3701	SCREW	93	H68-2401	DRIVE BEARING COVER PLATE
42	H68-4801	ARM LEVER SPRING	94	G42-6301	BALL BEARING
43	H50-3901	SCREW	95	H03-6301	O-RING
44	H68-7201	CLUTCH RING WASHER	96	H68-2502	DRIVE BEARING COVER
45	G33-8401	O-RING	97	G94-6802	SCREW
46	H68-8601	CLUTCH RING	98	H68-6302	HANDLE CAP
47	H68-4102	INFINITE COVER	99	H87-7101	HANDLE
49	H53-5301	MAG SEALED	100	G68-4801	WASHER
50	H50-2601	O-RING			
51	F76-5401	ONEWAY CLUTCH			