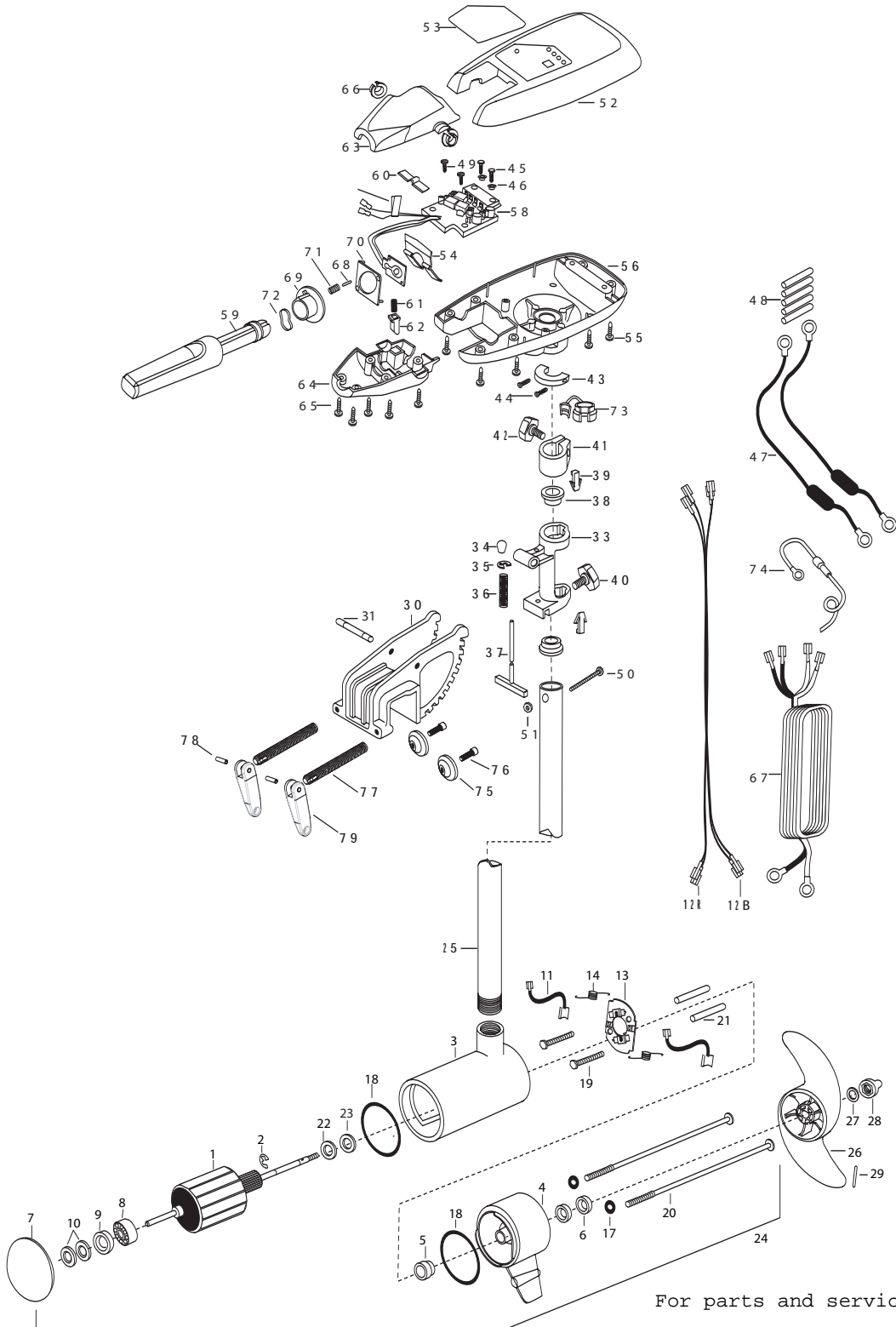


RT80/S
80 lbs Thrust
24 volt 56 amps
42" Shaft

for use with "AG" serial numbers
3-year warranty from the date of purchase

For parts and service
call toll free: 1-888-404-1119
www.mikesreelrepair.com



For parts and service
call toll free: 1-888-404-1119
www.mikesreelrepair.com

1	2-100-214	ARMATURE ASSEMBLY 36V VARS SW	29	2262658	PIN-DRIVE SS		
2	788-040	RETAINING RING	■	2991830	BRACKET & HINGE ASSEMBLY (SW)	58	2344006 CTRL BOARD ASSEMBLY-RT 80
3	2-200-397	CENTER HOUSING ASSEMBLY- 4.0 SW TXT WHT	30	2031934	BRACKET DIE CAST SW WHITE 10P	59	2990915 HANDLE ASSEMBLY W/O U-JOINT
4	2-300-340	BRUSH END HOUSING ASSEMBLY 4 SW WHT	31	2010512	PIN-DRIVE LOK 3/8X2-1/2 SS	60	2302742 SPRING-DETENT (OFF) SS
5	144-017	BEARING -FLANGE (SERVICE ONLY)	33	2031856	HINGE-MACH SS RT WHITE	61	2302745 SPRING-RELEASE BUTTON SS
6	880-025	**SEAL [2.EA]	34	2010100	KNOB-TILT	62	2303720 RELEASE BUTTON-HANDLE
7	421-376	PLAIN END HOUSING ASSEMBLY 4.0 WHT	35	2333001	E-RING- SS	63	2060411 HANDLE (TOP HALF) MAXIMIZE
8	140-010	BALL BEARING	36	2332700	SPRING- (T-BAR) SS	64	2060415 HANDLE (LOWER HALF)
9	990-045	THRUST SPACER	37	2033601	T-BAR (E-COAT)	65	2303412 SCREW-6-20 X 5/8 SELF TAP [5.EA]
10	992-010	SPRING WASHER [2.EA]	38	2037301	BUSHING-HINGE [2.EA]	66	2060005 BEARING-HANDLE PIVOT [2.EA]
11	188-094	BRUSH 4" W/TERMINAL [2.EA]	39	2062800	TENSION BLOCK- "SNAP IN" [2.EA]	67	2050609 LEADWIRE (10 GA) SPADE TERM.
12B	640-018	BRUSH WIRE BLACK 10 AWG 62"	40	2011386	SCREW-TENSION/NEW KNOB SS	68	2302600 PIN-ACTUATOR
12R	640-123	BRUSH WIRE RED 10 AWG 64"	41	2061520	COLLAR-DEPTH	69	2302850 ACTUATOR-CAM
13	738-004	BRUSH PLATE -4" TERMINAL	42	2011366	SCREW-COLLAR/NW KNOB SS	70	2302851 ACTUATOR-FWD/REV
14	975-041	SPRING -TORSION [2.EA]	43	2061517	COLLAR-CTRL BOX SW WHITE	71	2302740 SPRING- (ACTUATOR)
17	701-009	**O-RING -THRU BOLT [2.EA]	44	2263434	SCREW #8-3/4 PPH TYPE 25 SS [2.EA]	72	2302741 SPRING-CAM (ZNC PLTD STEEL)
18	701-043	**O-RING [2.EA]	45	2301310	SCREW-8-18 X 1/2 SS [2.EA]	73	2052900 STRAIN RELIEF-C.CORD/SP.C
19	830-027	SCREW -SELF THREADED 10-32 X 2"[2.EA]	46	2301710	WASHER-INSUL. (TRANSF.BAR) [2.EA]	74	2340610 CONNECTOR CABLE 12"
20	830-096	THRU BOLT 12-24 X 11.56" SS [2.EA]	47	2998200	CIRCUIT BRKR ASSEMBLY,36V- [2.EA]	75	2331700 WASHER, CLAMP SCREW SS [2.EA]
21	973-025	SPACER -BRUSH PLATE [2.EA]	48	2305400	SHRINK TUBE-3/8 OD X 1-1/ [5.EA]	76	2263452 SCREW 1/4-20 X 3/4 SS [2.EA]
22	990-051	WASHER-STEEL THRUST	49	2372100	SCREW-8-18 X 5/8 THD* SS [2.EA]	77	2051301 CLAMP SCREW [2.EA]
23	990-052	WASHER- NYLATRON	50	2263406	SCREW-#10-24 X 2 (SS) PPH	78	2052625 PIN-HANDLE
24	2316224	MOTOR ASSEMBLY 36V VARS WHITE	51	2333101	NUT-HEX 10-24 UNC-2B NYLOCK	79	2050925 HANDLE-SCREW
25	2032034	TUBE (COMPOSITE) 42" WHITE	52	2300219	COVER- CONTROL BOX (SW) RT WHITE	■	2991301 CLAMP SCREW-HANDLE ASSEMBLY
■	1378132	PROPELLER KIT	53	2095684	DECAL-COVER RT80/B/S		(INCLUDES ITEMS 77,78,79)
26	2331160	PROPELLER (WW2)	54	2302743	SPRING-DETENT HANDLE-TILT		
27	2091701	WASHER- PROP LARGE MAX	55	2303412	SCREW-6-20 X 5/8 SELF TAP [6.EA]		
28	2198401	ANODE- ZINC 4.0 LWR UNIT	56	2062596	CONTROL BOX,SW, WHITE .725 BORE		

** Seal & Oring Kit P/N 2889460 * This item is part of an assembly. This item cannot be sold separately due to machining and /or assembly that is required.

P/N 2094912 REV. A 7-05

For parts and service

call toll free: 1-888-404-1119

www.mikesreelrepair.com

For parts and service
call toll free: 1-888-404-1119
www.mikesreelrepair.com

