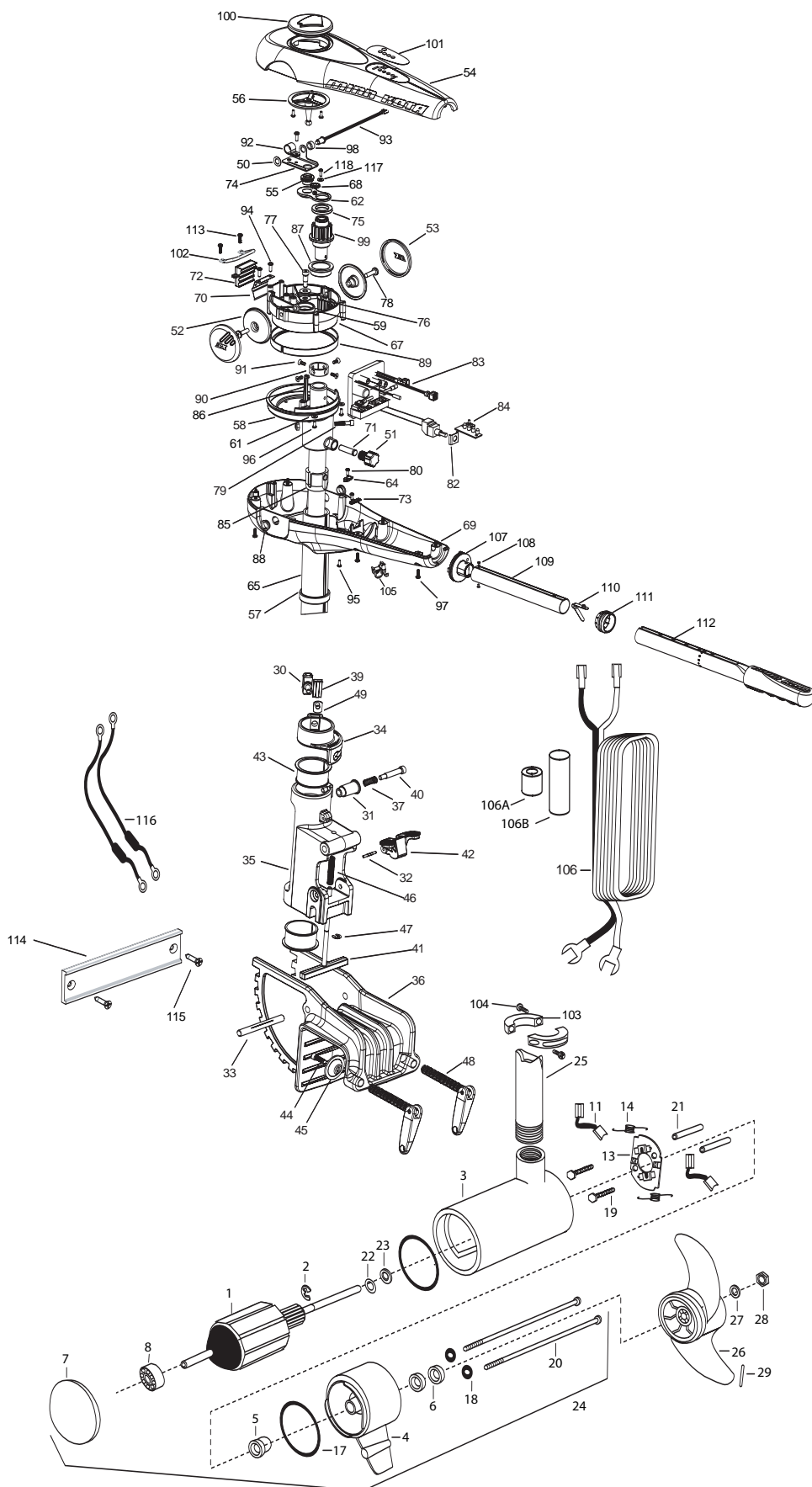


**RT101/S- 3X STEERING  
SUPER DUTY BRACKET**  
101 LBS THRUST  
36 VOLT 46 AMPS  
42" & 52" SHAFT

for use with "WWAF" serial numbers  
3-year warranty from the date of purchase

For Parts and Service  
Call 1-888-404-1119  
[www.mikesreelrepair.com](http://www.mikesreelrepair.com)



1	2-100-215	ARMATURE ASSEMBLY 36V 4 VARS FW 101#	*40	2073402	SCREW 5/16 X 1 1/4" SHOULDER	82	2074000	POT CLIP
2	788-040	RETAINING RING	41	2073604	T-BAR	83	2074061	CONTROL BOARD ASSEMBLY
3	2-200-310	CENTER HOUSING ASSEMBLY 4.0 FW TXT	42	2077202	TILT LEVER	84	2074082	BATTERY METER
4	2-300-340	BRUSH END HOUSING ASSEMBLY 4.0 FW	43	2077310	BUSHING HINGE [2 EA.]	85	2075100	TENSION SLEEVE
5	144-017	BEARING -FLANGE (SERVICE ONLY)	44	2263452	SCREW 1/4-20 SHCS [2 EA.]	86	2076701	KEY - TUBE
6	880-025	SEAL [2.EA]	45	2331700	WASHER CLAMP [2 EA.]	87	2077305	BEARING UPPER
7	421-360	PLAIN END HOUSING ASSEMBLY 4.0	46	2332700	SPRING	88	2077316	BUSHING-PIVOT [2 EA.]
8	140-010	BALL BEARING	47	2013000	E-RING [2 EA.]	89	2077320	BEARING - GEAR CARRIER
11	188-094	BRUSH 4"W/TERMINAL [2.EA]	48	2991301	CLAMP / HANDLE ASSEMBLY	90	2071560	COLLAR TUBE
12B	640-018	BRUSH WIRE- BLACK 10 AWG 62 1/2 (42")	49	2263101	T-NUT	91	2223468	SCREW 8-32 [4 EA.]
	640-022	BRUSH WIRE-BLACK 10 AWG 72 1/2 (52")	50	2013100	SPEED NUT	92	2263201	CLAMP WIRE HARNESS
12R	640-123	BRUSH WIRE- RED 10 AWG 64 XLP (42")	51	2070105	KNOB-TENSION	93	2264015	LIGHT INDICATOR
	640-127	BRUSH WIRE - RED 10 AWG 74 XLP (52")	52	2070110	PIVOT KNOB [2 EA.]	94	2372100	SCREW 8-18 SS [2 EA.]
13	738-004	BRUSH PLATE - 4" TERMINAL	53	2070118	COVER-PIVOT KNOB [2 EA.]	95	2073416	SCREW 8-32 SS SHCS [2 EA.]
14	975-041	SPRING -TORSION [2.EA]	54	2070206	COVER 3:1	96	2332103	SCREW 6-20 SS [5 EA.]
17	701-009	O-RING -THRU BOLT [2.EA]	55	2070801	COUPLER SOCKET	97	2012100	SCREW 8-18 X 5/8" [6 EA.]
18	701-043	O-RING ( 2 REQ'D)	56	2070810	COUPLER DRIVE	98	2071525	SPACER-INDICATOR LIGHT
19	830-027	SCREW -SELF TREADED 10-32 X 2" [2.EA]	57	2071500	COLLAR SUPPORT-LOWER	99	2992205	PINION - MAIN
20	830-096	THRU BOLT 12-24 X 11.56" SS [2.EA]	58	2071513	YOKE-GEAR CARRIER	100	2998601	INDICATOR ASSEMBLY
21	973-025	SPACER -BRUSH PLATE [2.EA]	59	2071710	WASHER NYLATRON [2 EA.]	101	2075617	DECAL COVER RT 101
22	990-051	WASHER-THRUST, STEEL	60	2071712	WASHER SS	102	2072815	BRACKET TILT STOP
23	990-052	WASHER- NYLATRON	61	2071714	WASHER FLAT #6 [2 EA.]	103	2261622	COLLAR HALF [2 EA.]
24	2316258	MOTOR ASSEMBLY 36V VARS TXT 42"	62	2071900	IDLER PLATE	104	2263453	SCREW 1/4-20 X1" [2 EA.]
	2316256	MOTOR ASSEMBLY 36V VARS TXT 52"	64	2071905	BRACKET- SENSOR SWITCH	105	2052900	STRAIN RELIEF
25	2072016	TUBE (COMP) 42"	65	2072096	OUTER TUBE 3:1 42"	106	2090600	LEADWIRE
	2072017	TUBE (COMP) 52"		2072097	OUTER TUBE 3:1 52"	106A	2307310	BEAD - FERRITE [2 EA] (CE MODELS ONLY)
■	1378132	PROPELLER KIT	67	2072210	GEAR CARRIER	106B	2075401	HEAT SHRINK 1.10 OD X 3.5" (CE MODELS ONLY)
26	2331160	PROPELLER W/WEDGE 2	68	2072215	GEAR- IDLER	107	2990404	PIVOT HANDLE ASSEMBLY
27	2091701	WASHER-5/16 SS	69	2072502	CONTROL BOX	108	2072102	SCREW #6 X 1/4" [2 EA.]
28	2198401	ANODE	70	2072705	SPRING DETENT	109	2070425	HANDLE TUBE
29	2262658	PIN-DRIVE	71	2072710	SPRING TENSION SLEEVE	110	2070411	LATCH-BUTTON
■	2991827	BRACKET/HINGE ASSEMBLY	72	2072810	DETENT BLOCK-TILT	111	2070010	BEARING
30	2011386	SCREW-TENSION	73	2072811	DETENT BLOCK-SWITCH	112	2990931A	HANDLE ASSEMBLY-EXT.
31	2070100	KNOB ORIENTATION COLLAR	74	2072900	RETAINER COUPLER	113	2332101	SCREW #8-32 X 1/2" SS [2 EA.]
32	2070512	PIN HINGE	75	2073000	RING PRELOAD	■	2994844	TRANSOM STABILIZER ASSEMBLY
33	2070514	PIN PIVOT	76	2073100	HEX NUT - NYLOC [3 EA.]	114	2058415	TRANSOM EXTRUSION
34	2071505	ORIENTATION COLLAR	77	2073400	SCREW 5/16 X 1/2 SHOULDER	115	2053421	SCREW 1/4 -14 X 1" PPH
35	2071873	HINGE 3:1 BRACKET	78	2073408	SCREW [2 EA.]	116	2998200	CIRCUIT BREAKER ASSEMBLY
36	2071942	BRACKET FW BLACK	79	2073410	SCREW	117	2071720	#4 WASHER SS
*37	2072700	SPRING	80	2073414	SCREW 6-32 PPH	118	2373440	#4 SCREW SS
39	2072800	TENSION BLOCK						

Seal & Oring Kit P/N 2889460 \* This item is part of an assembly. This item cannot be sold separately due to machining and /or assembly that is required.

P/N 2074928

REV. C 4-05

For Parts and Service  
Call 1-888-404-1119  
www.mikesreelrepair.com

For Parts and Service  
Call 1-888-404-1119  
[www.mikesreelrepair.com](http://www.mikesreelrepair.com)

