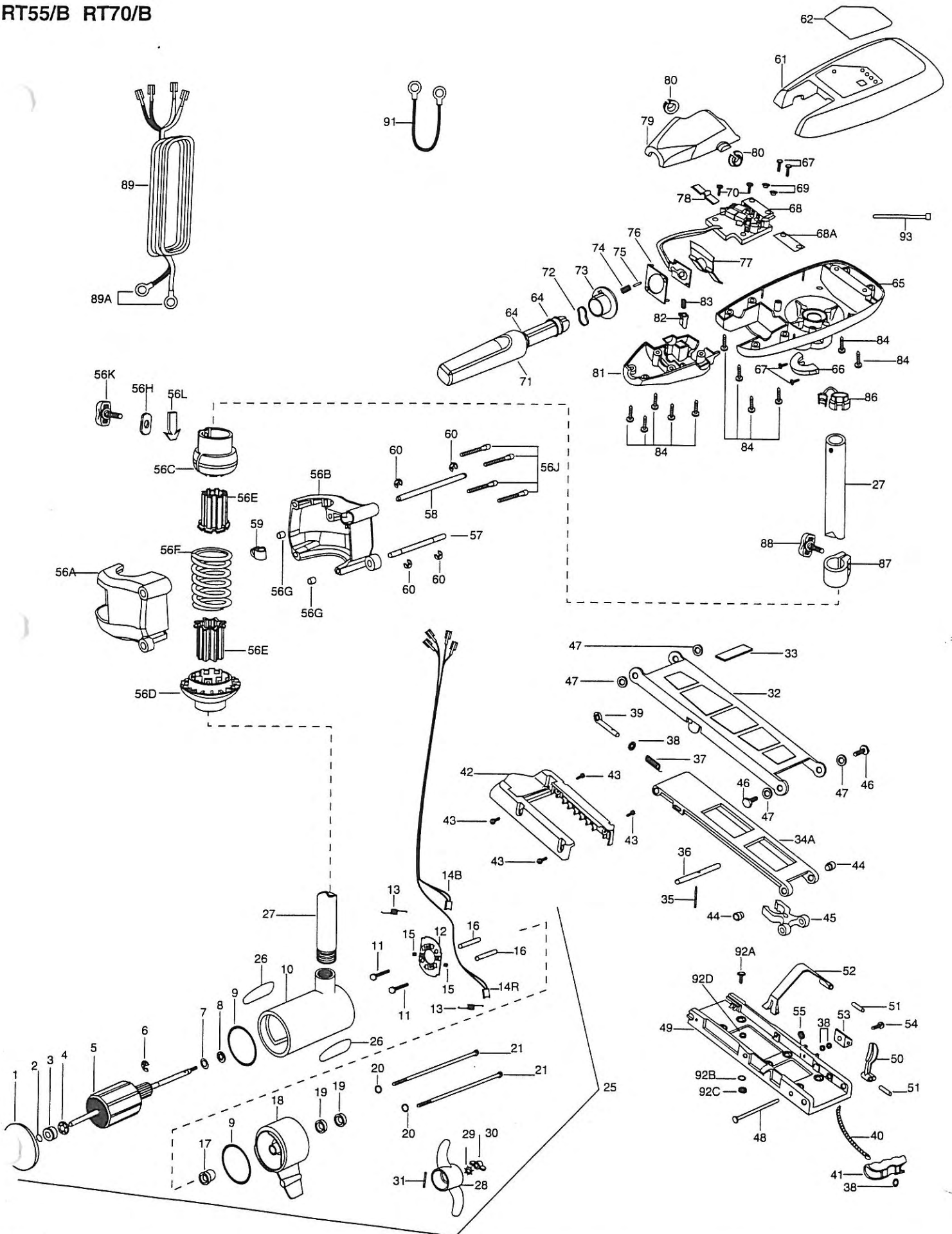
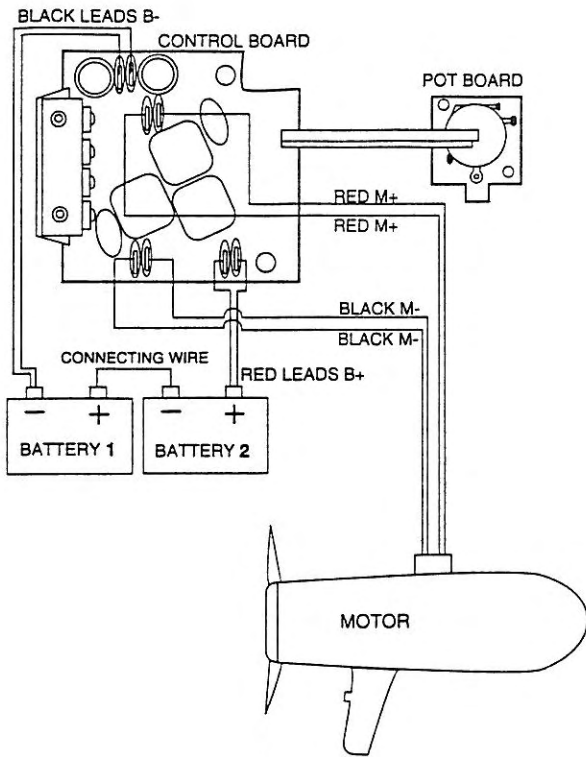


RT55/B RT70/B



Item	Part No.	Description	Item	Part No.	Description	Item	Part No.	Description
1	409-025	Front Endbell	34*A	225-4323	Arm- Lower (order item 34)	68	233-4005	Control Board Assembly (RT55/B)
2	406-050	Thrust Disc	35	215-2610	Spring Pin	68	234-4005	Control Board Assembly (RT70/B)
3	409-600	Spherical Bearing	36	223-3601	Lock Bar	68A	236-5105	Insulating Pad
4	409-301	Bearing Retainer	37	215-2701	Spring	69	230-1710	Washer- Insulated (2 req'd)
5	410-204	Armature Assembly RT55/B	38	215-1700	Washer- Eye Shaft (4 req'd)	70	230-1310	Screw (2 req'd)
5	410-205	Armature Assembly RT70/B	39	215-3601	Eye Shaft	71	299-0915	Handle Assembly
6	409-300	E-Ring	40	225-1600	Rope	72	230-2741	Spring- Cam
7	409-170	Thrust Washer- Steel (as req'd)	41	215-0400	Pull Grip	73	230-2850	Actuator- Cam
8	409-171	Thrust Washer- Nylatron (as req'd)	42	226-3900	Motor Rest	74	230-2740	Spring- Actuator
9	409-460	O-Ring (2 req'd)	43	230-3431	Screw (4 req'd)	75	230-2600	Pin- Actuator
10	409-258	Center Section w/Magnets	44	223-6000	Bearing- Nyliner (2 req'd)	76	230-2851	Actuator- Forward/Reverse
11	405-341	Brush Plate Screw (2 req'd)	45	229-3801	Tube Lock	77	230-2743	Spring- Detent
12	409-401	Brush Plate Assembly	46	229-3511	Bolt- Upper Arm (2 req'd)	78	230-2742	Spring- Detent (Off)
13	406-083	Brush Spring (2 req'd)	47	229-3500	Bushing (4 req'd)	79	206-0411	Handle- Top Half
14B	409-072	Brush Assembly- Black (42")	48	223-0500	Hinge Pin	80	206-0005	Bearing- Handle Pivot (2 req'd)
14B	409-074	Brush Assembly- Black (48")	49	225-1943	Bow Plate	81	206-0415	Handle- Lower Half
14R	409-071	Brush Assembly- Red (42")	50	226-7200	Latch Lever	82	230-3720	Release Button
14R	409-073	Brush Assembly- Red (48")	51	226-0505	Pin- Roll Latch Lever (2 req'd)	83	230-2745	Spring- Release Button
15	409-343	Brush Set Screw (2 req'd)	52	226-3801	Strap- Hold Down	84	230-3412	Screw (11 req'd)
16	405-151	Brush Plate Spacer (2 req'd)	53	226-1910	Bracket- Hold Down Strap	86	233-2900	Strain Relief
17	409-000	Flange Bearing	54	226-3442	Screw	87	203-1520	Collar- Depth
18	409-034	Rear Endbell	55	233-3101	Nut- Hex	88	201-1366	Screw- Collar
19	409-461	Seal (2 req'd)	56	277-1933	BowGuard Assembly (56A — 56L)	89	233-0600	Leadwire- w/ Ring Terminals
20	409-462	O-Ring- Thru Bolt (2 req'd)	56*A	226-1923	Bracket Base- Left	89A	209-0700	Replacement Ring Terminals (2 req'd)
21	409-352	Thru Bolt (2 req'd)	56*B	226-1933	Bracket Base- Right	91	234-0610	Connector Cable- 24v only (RT70/B)
25	233-7080	Motor & Tube Assembly (RT55/B-42")	56*C	226-1520	Spring Sleeve- Upper	92	299-4812	Bag Assembly (92A — 92D)
25	233-7081	Motor & Tube Assembly (RT55/B-48")	56*D	226-1530	Spring Sleeve- Lower	92*A	233-3500	Mounting Bolt (6 req'd)
25	231-7040	Motor & Tube Assembly (RT70/B-42")	56*E	226-4700	Insert Tube (2 req'd)	92*B	233-3102	Mounting Nut (6 req'd)
25	231-7041	Motor & Tube Assembly (RT70/B-48")	56*F	226-2701	Spring- Breakaway	92*C	215-1726	Flat Washer (6 req'd)
26	206-6649	Decal (2 req'd)	56*G	226-7310	Bushing- Dowel (2 req'd)	92*D	230-1720	Mounting Washer- Rubber (6 req'd)
27	203-2053	Tube (42")	56H	226-3101	Nut- Insert	93	225-6300	Tie Wrap
27	203-2054	Tube (48" Optional)	56*J	226-3470	Screw (4 req'd)			
28	233-1120	Propeller	56K	201-1386	Screw- Tension			
29	209-1700	Lockwasher	56L	226-2800	Tension Block			
30	209-3100	Nut- Prop	57	226-0530	Hinge Pin- Lower			
31	209-2600	Pin- Drive	58	226-0520	Hinge Pin- Upper			
	299-1959	Bow Mount Assembly (32 — 60)	59	226-2310	Guide- Rope			
32	226-4203	Arm- Upper	60	226-3011	E-Ring (4 req'd)			
33	226-5120	Bumper	61	230-0227	Control Box Cover			
34	277-4303	Arm- Lower Assembly (34A — 41+ 59)	62	219-5626	Decal- Cover (RT55/B)			
			62	219-5636	Decal- Cover (RT70/B)			
			64	206-0000	Handle Bearing (2 req'd)			
			65	206-2584	Control Box			
			66	206-1511	Collar- Control Box			
			67	237-2100	Screw (4 req'd)			

* This item is p an assembly. This item cannot be sold separately due to machining and assembly that is required.



RT55/B

