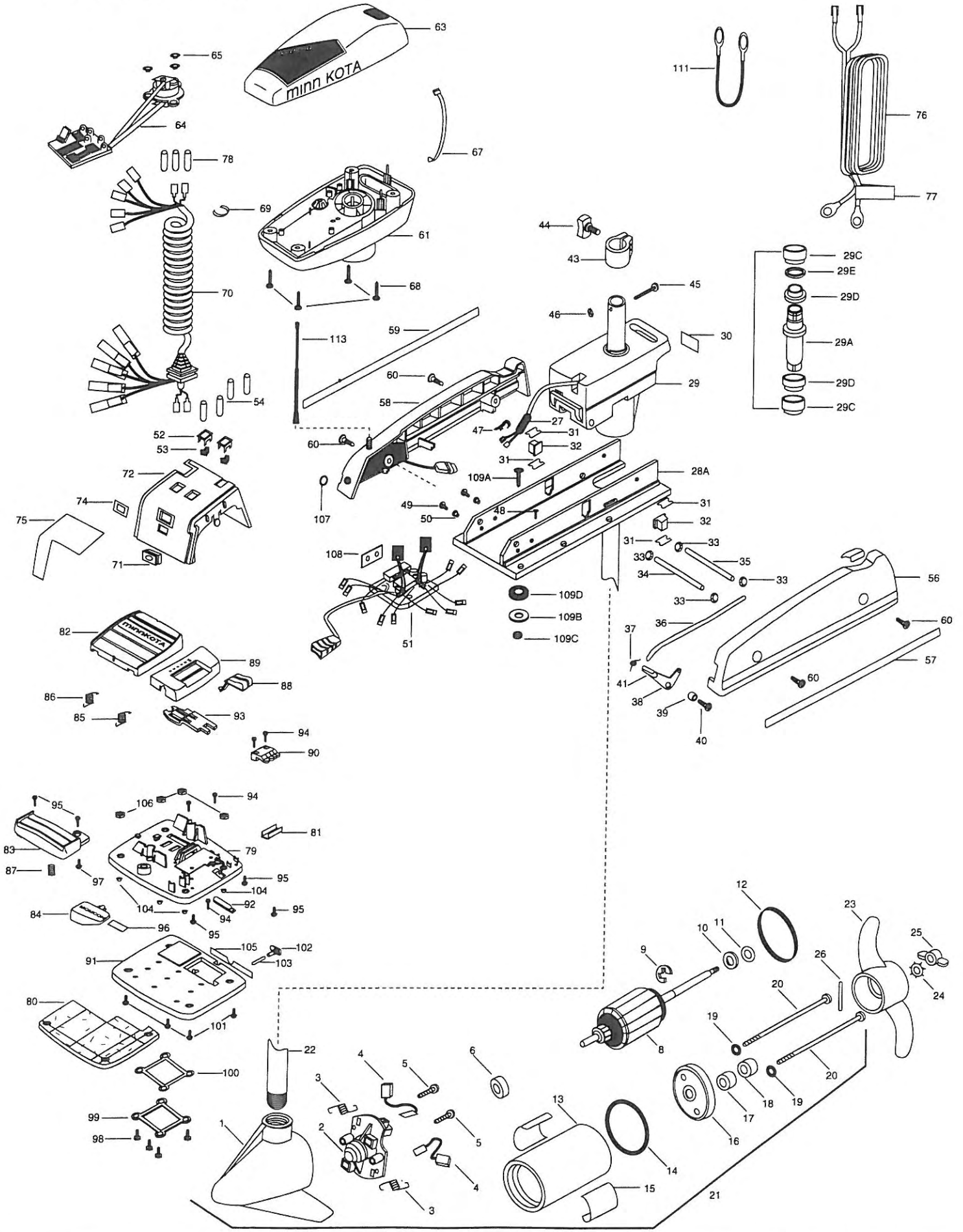


RT42AP/C RT48AP/C



In the U.S.A., replacement parts may be ordered directly from MINN KOTA Parts Dept., JWA North America, 1531 E. Madison Avenue, Mankato, Minnesota 56001. In Canada, parts may be ordered from any of the Canadian Authorized Service Centers shown on the enclosed list. Be sure to provide the model and SERIAL numbers of your motor when ordering parts. Please use the correct part numbers from the parts list. Payment for any parts ordered from the MINN KOTA parts department, may be by cash, personal check, Discover Card, MasterCard, VISA, or UPS C.O.D. To order, call 1-800-227-6433 or FAX 1-800-527-4464.

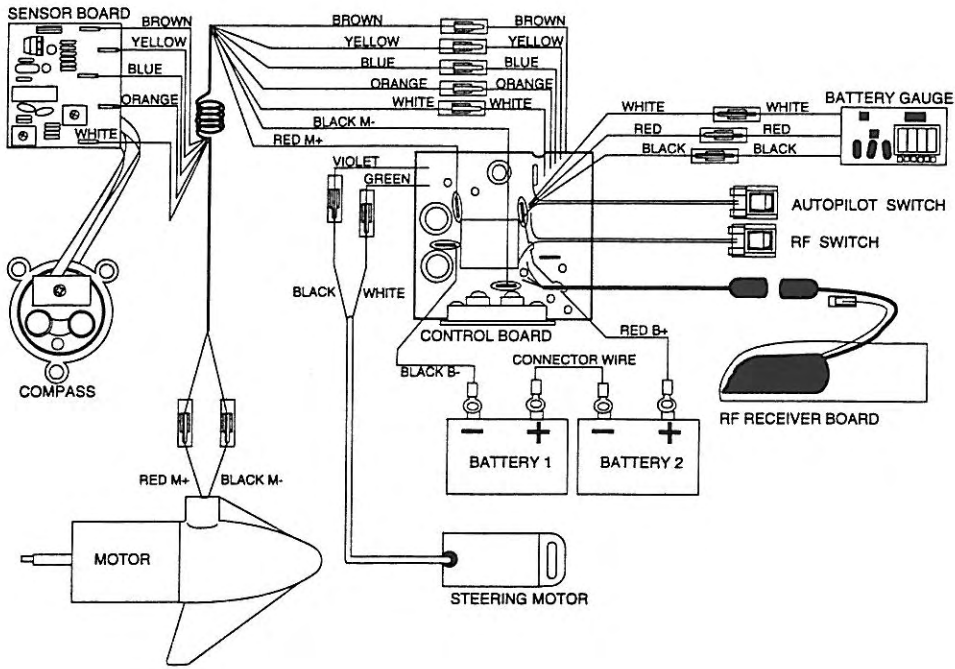
Hors de États-Unis, veuillez vous reporter à la liste ci-jointe pour le Centre de Service Agréé MINN KOTA le plus proche. Ne pas oublier de fournir les numéros de Modèle et de Série de votre Moteur lorsque vous placez une commande. Employez toujours le numéro de pièce exact se trouvant sur la liste des pièces de remplacement.

Fora da América do Norte, queira consultar a lista anexa para identificar o Centro de Serviço Autorizado MINN KOTA. Não deixe de incluir o número do MODELO e o número de SÉRIE do seu motor ao pedir peças. Sempre use os números corretos das peças da lista de peças.

1	409022	FRONT ENDBELL	46	2333101	NUT-HEX SS	99	2300250	COVER-BATTERY COMPARTMENT
2	406403	BRUSH PLATE ASSEMBLY	47	2302935	STRAIN RELIEF-DR. HOUSING	100	2304602	GASKET-BATTERY COMPARTMENT
3	406082	BRUSH SPRING (2 REQ'D)	48	2332100	SCREW-8-32 X 3/8	101	2303425	SCREW- 1/4-20 (4 REQ'D)
4	406071	BRUSH ASSEMBLY (2 REQ'D)	49	2332101	SCREW-8-32 X 1/2 SS (2 REQ'D)	102	2304080	SWITCH-RF FOOT PEDAL
5	406342	BRUSH PLATE SCREW (2 REQ'D)	50	2301710	WASHER-INSUL. TRANSF. BAR (2 REQ'D)	103	2304081	MAGNET- SWITCH
6	406010	BALL BEARING	51	2304025	CTRL BRD ASSY-12V AP/C	104	2305131	RUBBER BUMPER (4 REQ'D)
8	409204	ARMATURE ASSEMBLY RT42AP/C		2304027	CTRL BRD ASSY-24V AP/C	105	2306622	DECAL- OFF/ON
	409205	ARMATURE ASSEMBLY RT48AP/C	52	2304072	BEZEL-SWITCH (2 REQ'D)	106	2303115	HEX NUT 1/4-20
9	405300	E-RING	53	2304073	SWITCH-ROCKER (2 REQ'D)	107	2306620	DECAL- LENS COVER
10	406170	THRUST WASHER- STEEL (AS REQ'D)	54	2305400	SHRINK TUBE-3/8 OD (4 REQ'D)	108	2305141	INSULATION PAD
11	405171	THRUST WASHER- NYLON (AS REQ'D)	56	2993801	SIDEPLATE(LEFT)W/REST PAD	109	2994805	BAG ASSEMBLY (ITEMS 109A-109D)
12	406490	GASKET RT42AP/C	57	2004919	DECAL-LF SIDEPLATE	*109A	2333500	BOLT-MOUNTING SS (4 REQ'D)
13	409254	CENTER SECTION W/MAGNETS RT42AP/C	58	2303926	SIDEPLATE-W/RCVR-A/P	*109B	2151726	WASHER-STANDARD 5/16 SS (4 REQ'D)
	409255	CENTER SECTION W/MAGNETS RT48AP/C	59	2004918	DECAL-RT SIDEPLATE	*109C	2333102	NUT-MOUNTING (4 REQ'D)
14	406470	O-RING RT42AP/C	60	2303430	SCREW-1/4-20 X 5/8 (4 REQ'D)	*109D	2301720	WASHER-MOUNTING (6 REQ'D)
15	2066649	DECAL RIPTIDE (2 REQ'D)	61	2302515	CONTROL BOX (PLASTIC)	111	2090620	CONNECTOR CABLE (24V ONLY)
16	409032	REAR ENDBELL	63	2300216	CONTROL BOX COVER	113	2001515	RF ANTENNA
17	406461	SEAL	64	2994000	CONTROL BOARD COMPASS ASSY			
18	406471	SEAL- CUP	65	2302960	GROMMET-COMPASS (3 REQ'D)			
19	405462	O-RING —THRU BOLT (2 REQ'D)	66	2332103	SCREW-6-20 X 3/8 (2 REQ'D)			
20	406353	THRU BOLT (2 REQ'D)	67	2256300	TIE WRAP-5.5"-BLACK			
21	2099065	MOTOR ASSEMBLY RT42/AP/C	68	2372100	SCREW-8-18 X 5/8 SS (4 REQ'D)			
	2099057	MOTOR ASSEMBLY RT48/AP/C	69	2303001	RING-PIG			
22	2032053	TUBE 42"	70	2301220	COIL CORD-W/STRAIN RELIEF 42"			
	2032054	TUBE 48" OPTIONAL		2301221	COIL CORD-W/STRAIN RELIEF 48"			
23	2091150	PROPELLER (W.WEDGE)	71	2302920	GROMMET-LEADWIRE/SPCOVER			
24	2051700	LOCKWASHER-PROP	72	2306532	COVER-SPEED CONTROL			
25	2053100	NUT-PROP	74	2306606	DECAL -HOLE RT			
26	2092600	PIN-DRIVE	75	2305607	DECAL-ON/OFF RT42AP/C			
27	2304079	RF FILTER		2305608	DECAL-ON/OFF RT48AP/C			
*28	2991941	BASE ASSEMBLY	76	2090600	LEADWIRE (10 GA) RINGS			
28A	2301913	BASE MACHINED	77	2305800	DECAL LEADWIRE (BATTERY)			
29	2301841	DRIVE HOUSING-QUICK RELEASE	78	2065400	WIRE INSULATOR (3 REQ'D)			
*29A	2302001	DRIVE HOUSING SLEEVE	79	2994706	FOOT PEDAL ASSY.W/WEDGE (ITEMS 79A-106)			
29B	2887301	BUSHING KIT (29C, 29D, 29E)	79A	2304511	FOOT PEDAL BASE-CORDLESS			
*29C	2307302	BUSHING- INSIDE (2 REQ'D)	*80	2004705	FLOTATION MATERIAL			
*29D	2307303	BUSHING- OUTSIDE (2 REQ'D)	81	2308500	WEAR PLATE			
*29E	2304600	O-RING	82	2304516	FOOT PEDAL-UPPER			
*29F	2307025	MOTOR DRIVE HOUSING W/WIRE & GROMMET	83	2304520	FOOT PEDAL-LOWER			
30	2305519	DECAL-STEERING MTR	84	2307210	LEVER MOM/CON			
31	2305110	PAD-PIVOT SUPPORT (4 REQ'D)	85	2302730	SPRING-LONG-UPPER PEDAL			
32	2305100	PAD-PIVOT (2 REQ'D)	86	2302731	SPRING-SHORT-UPPER PEDAL			
33	2013100	NUT-SPEED	87	2302732	SPRING-LOWER PEDAL SS			
34	2300500	PIN-LATCH (PD BASE)	88	2300120	KNOB-SPEED SELECTOR			
35	2300510	PIN-PIVOT (PD BASE)	89	2300122	HOUSING-SPEED SELECTOR			
36	2303610	ROD-RELEASE (11 GA.)	90	2302840	ACTUATOR-BOARD			
37	2302700	SPRING- RELEASE LEVER	91	2994709	WEDGE ASSEMBLY			
38	2303710	LEVER-RELEASE	92	2302841	ACTUATOR-MOM/CON			
39	2301700	SPACER-RELEASE LEVER	93	2302842	ACTUATOR-STEERING			
40	2303430	SCREW-1/4-20 x 5/8	94	2302100	SCREW-6-20 X 1/2 (5 REQ'D)			
42	2300101	RELEASE-KNOB	95	2372100	SCREW-8-18 X 5/8 SS (5 REQ'D)			
43	2031521	COLLAR DRIVE W/INSERT	96	2266610	ON/OFF SWITCH			
44	2011366	SCREW-COLLAR KNOB	97	2335130	BUMPER ACTUATOR			
45	2332102	SCREW-10-24 X 1-3/4 SS	98	2301310	SCREW-#8 THD 1/2 SS (4 REQ'D)			

* This item is part of an assembly. This item cannot be sold separately due to machining and /or assembly that is required.

48PD/AP/C RT48/AP/C



36-42PD/AP/C RT42/AP/C

