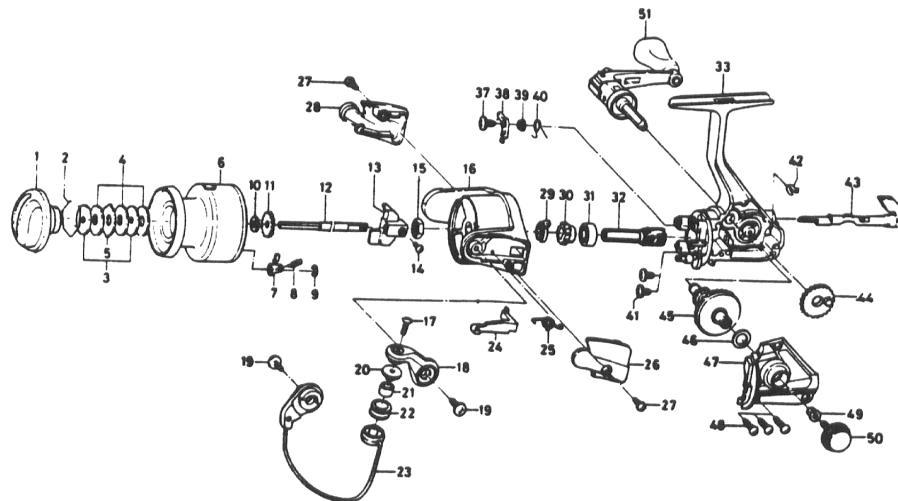


6Y2928010



Please order by parts number, not key number
 Bitte, Best: -Nr. angeben (Nicht "key" -Nr.)
 Veuillez indiquer le numero de la pièce (Non "key" No.)

SPINNING REEL REGAL-S1500B



Key NO.	Parts No.	Parts Name
2-9	6-F33-0101	Spool assembly
1	6-F32-8501	Drag knob
2	6-F37-3301	Drag washer retainer
3	6-E46-7201	Key washer
4	6-E13-6001	Drag washer
5	6-373-3603	Eared washer
6	6-F33-0201	Spool assembly
7	6-B07-5304	Click pawl
8	6-E40-3101	Click spring
9	6-320-5901	Click retainer
10	6-E46-7101	Spool washer
11	6-270-6501	Click gear
12	6-E49-8401	Main shaft
13	6-F12-2301	Oscillating slider
14	6-351-0311	Oscillating slider screw
15	6-341-9201	Rotor nut
16	6-F32-7801	Rotor
17	6-B67-9304	Line roller screw
18	6-F32-3001	Bail arm
19	6-B84-2102	Bail arm screw
20	6-F06-6301	Line roller collar
21	6-F31-6801	Line roller bushing
22	6-E50-6001	Line roller
23	6-F32-8001	Bail assembly
24	6-E49-6401	Bail trip lever
25	6-E49-6801	Bail spring
26	6-F32-4201	Bail spring cover
27	6-E24-8101	Bail spring cover screw
28	6-F32-6301	Bail trip cover
29	6-F12-2101	Anti-reverse pawl spring A
30	6-F32-7701	Anti-reverse ratchet
31	6-634-1301	Ball bearing
32	6-F12-1601	Pinion gear
33	6-F33-0001	Body assembly
37	6-F12-5701	Anti-reverse pawl screw
38	6-F12-1901	Anti-reverse pawl
39	6-F12-3501	Anti-reverse pawl collar
40	6-F12-3401	Anti-reverse pawl spring B
41	6-E03-7801	Bearing retainer screw
42	6-F12-2001	Anti-reverse cam spring
43	6-F08-5122	Anti-reverse lever
44	6-F12-2201	Oscillating gear
45	6-F12-1501	Drive gear
46	6-375-8500	Drive gear washer
47	6-F32-7601	Side cover
48	6-E15-8602	Side cover screw
49	6-501-8501	Handle collar
50	6-B92-5004	Handle lock screw
51	6-F32-8201	Handle assembly