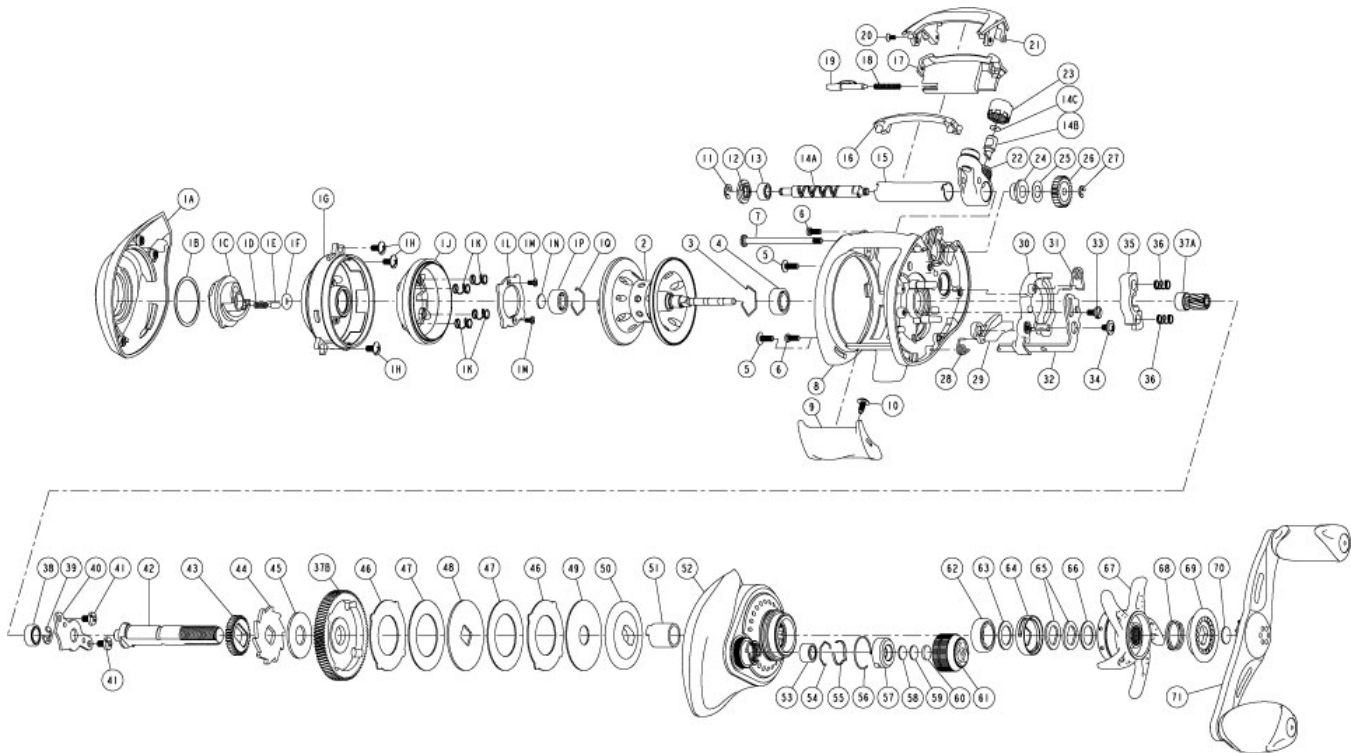


# QUANTUM<sup>®</sup>

## TKVD150HPT



**Quantum TKVD150HPT Baitcast Reel Part List**

| Key # | Description                            | Part No.  | Key # | Description                         | Part No.  |
|-------|--|-----------|-------|-------------------------------------|-----------|
| 1     | Palm Side Cover Kit include            | PW4023-01 | 28    | Kick Lever Spring                   | GX097-01  |
|       | 1A - Palm Side Cover Assembly          | N/A       | 29    | Kick Lever                          | PW077-01  |
|       | 1B - Centrifugal Dial Washer           | N/A       | 30    | Release Slider                      | PW039-01  |
|       | 1C - Centrifugal Dial Assembly         | N/A       | 31    | Release Slider Spring               | YV104-01  |
|       | 1D - Centrifugal Dial Click Spring     | N/A       | 32    | Release Slider Link                 | PW036-01  |
|       | 1E - Centrifugal Dial Click Pawl       | N/A       | 33    | Release Slider Link Screw           | EW125-01  |
|       | 1F - Centrifugal Dial Friction Ring    | N/A       | 34    | Release Slider Screw                | CX076-03  |
|       | 1G - Spool Cover                       | N/A       | 35    | Pinion Yoke                         | PW025-01  |
|       | 1H - Spool Cover Screw                 | N/A       | 36    | Yoke Spring                         | GX040-01  |
|       | 1J - Brake Ring Assembly               | N/A       | 37    | Gear Kit Include                    | PW4011-01 |
|       | 1K - Brake Ring Slider Spring          | N/A       |       | 37A - Pinion Gear Assembly          | N/A       |
|       | 1L - Brake Ring Slider Spring Retainer | N/A       |       | 37B - Drive Gear                    | N/A       |
|       | 1M - Brake Ring Spring Retainer Screw  | N/A       | 38    | Crank Shaft Ball Bearing - L        | SW017-01  |
|       | 1N - Spool Tension Shim                | N/A       | 39    | E-Clip                              | QW120-01  |
|       | 1P - Spool Shaft Ball Bearing - Palm   | N/A       | 40    | Crank Shaft Retainer                | PW002-01  |
|       | 1Q - Clip Ring                         | N/A       | 41    | Crank Shaft Retainer Screw          | JX107-02  |
| 2     | Spool Assembly                         | PW321-01  | 42    | Crank Shaft                         | PW008-01  |
| 3     | Clip Ring                              | EX080-01  | 43    | O/S Drive Gear                      | PW112-01  |
| 4     | Spool Shaft Ball Bearing - Gear        | EX017-02  | 44    | Trip Ratchet                        | PW083-01  |
| 5     | Gear Side Cover Screw - B              | QW053-07  | 45    | Trip Ratchet Washer                 | YW111-01  |
| 6     | Gear Side Cover Screw - A              | LF057-01  | 46    | Drag Key Washer                     | PW048-01  |
| 7     | Stabilizer Bar - A                     | PW061-01  | 47    | Drag Disc - A                       | PW059-01  |
| 8     | Frame                                  | N/A       | 48    | Drag "D" Washer                     | YW045-01  |
| 9     | Thumb Bar                              | PW009-01  | 49    | Drag Disc - B                       | YW059-01  |
| 10    | Thumb Bar Screw                        | CW125-01  | 50    | Drag Washer                         | PW045-01  |
| 11    | E-Clip                                 | NX092-01  | 51    | One Way Clutch Sleeve               | UX052-01  |
| 12    | Bearing Retainer                       | PW067-01  | 52    | Gear Side Cover Assembly            | PW324-01  |
| 13    | Worm Shaft Ball Bearing                | XX117-01  | 53    | Tension Knob Ball Bearing           | SW117-01  |
| 14    | Worm Shaft Kit Include                 | HV4072-02 | 54    | Tension Knob Ball Bearing Clip Ring | PW080-01  |
|       | 14A - Worm Shaft                       | N/A       | 55    | Tension Knob Click Spring           | PW114-01  |
|       | 14B - Line Guide Pawl                  | N/A       | 56    | Tension Knob Click Ratchet Retainer | YW080-01  |
|       | 14C - Line Guide Carrier Washer        | N/A       | 57    | Tension Knob Click Ratchet          | PW113-01  |
| 15    | Worm Shaft Guide                       | DW016-01  | 58    | Spool Tension Washer                | QW032-04  |
| 16    | Top Support                            | PW094-02  | 59    | Spool Tension Support Washer        | PW032-01  |
| 17    | Front Support                          | PW099-01  | 60    | Spool Cushion Washer                | EX082-02  |
| 18    | Side Cover Locking Lever Spring        | ZW096-01  | 61    | Spool Tension Knob Assembly         | PW333-01  |
| 19    | Side Cover Locking Lever               | YX119-02  | 62    | Crank Shaft Ball Bearing            | TW058-01  |
| 20    | Hood Screw                             | DW107-01  | 63    | Crank Shaft Ball Bearing Washer     | ZW032-01  |
| 21    | Hood                                   | PW027-01  | 64    | Drag Click Spring Assembly          | YX4114-01 |
| 22    | Line Guide Carrier Assembly            | PW347-01  | 65    | Spring "D" Washer                   | JX046-01  |
| 23    | Line Guide Carrier Screw               | ZW007-01  | 66    | Star Drag                           | PW055-01  |
| 24    | Worm Shaft Bushing - Gear Side         | PW068-01  | 67    | Handle Ratchet Spring               | UX040-01  |
| 25    | O/S Pinion Gear Washer                 | EX035-01  | 68    | Handle Ratchet                      | UX054-01  |
| 26    | O/S Pinion Gear                        | PW085-01  | 69    | Handle Washer                       | UX032-01  |
| 27    | E-Clip                                 | NX090-01  | 70    | Handle Assembly                     | PW318-01  |