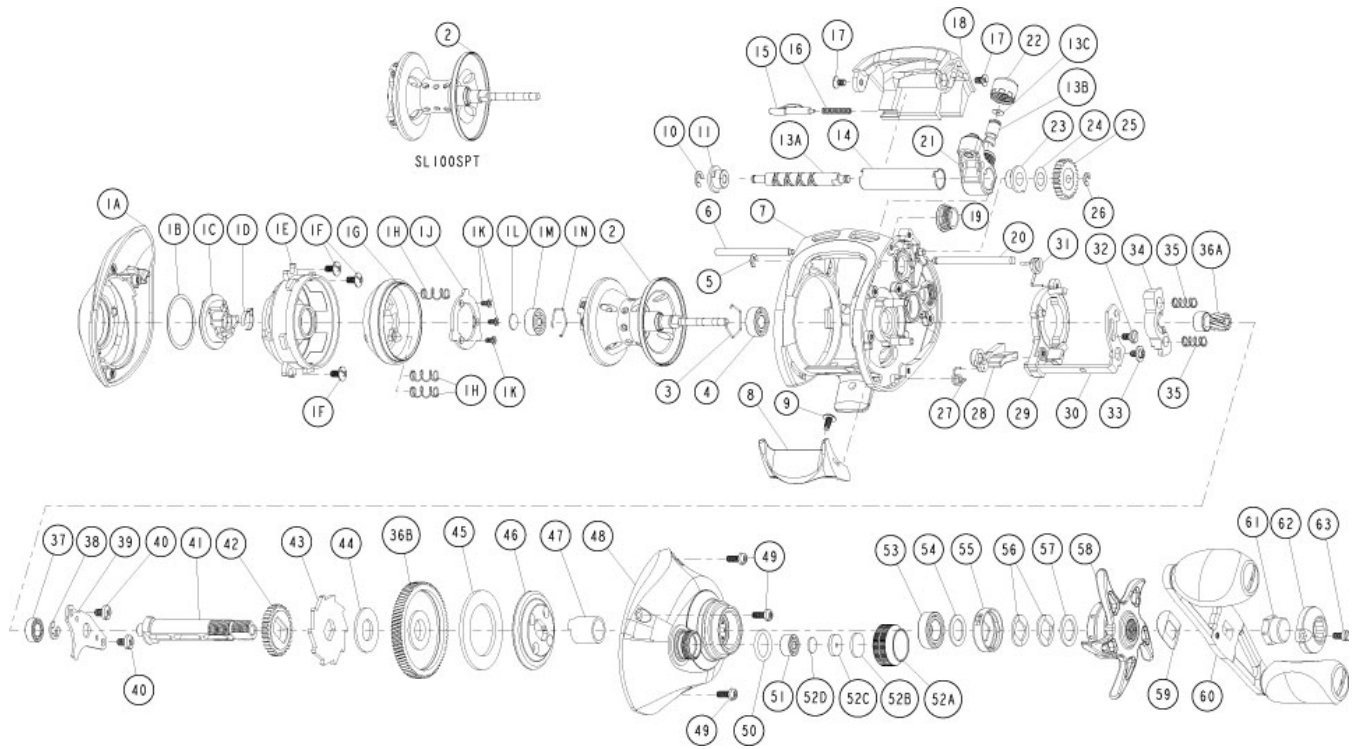


# QUANTUM

## SL100HPT



Quantum SL100HPT Bait Cast Reel Part List

| Key # | Description                       | Part No.  | Key # | Description                     | Part No.  |
|-------|-----------------------------------|-----------|-------|---------------------------------|-----------|
| 1     | Palm Side Cover Kit includes      | EW4023-04 | 28    | Kick Lever                      | DW077-01  |
| 1A    | Palm Side Cover Assembly          | IN KIT    | 29    | Release Slider                  | DW039-01  |
| 1B    | Centrifugal Dial Washer           | IN KIT    | 30    | Release Slider Link             | DW036-01  |
| 1C    | Centrifugal Dial Assembly         | IN KIT    | 31    | Release Slider Spring           | DW104-01  |
| 1D    | Centrifugal Dial Spring           | IN KIT    | 32    | Release Slider Link Screw       | EW125-02  |
| 1E    | Spool Cover                       | IN KIT    | 33    | Release Slider Screw            | CX076-03  |
| 1F    | Spool Cover Screw                 | IN KIT    | 34    | Pinion Yoke                     | EW025-01  |
| 1G    | Brake Ring Assembly               | IN KIT    | 35    | Yoke Spring                     | GX040-01  |
| 1H    | Brake Ring Slider Spring          | IN KIT    | 36    | Gear Kit Includes               | DW4011-03 |
| 1J    | Brake Ring Slider Spring Retainer | IN KIT    | 36A   | Pinion Gear Assembly            | IN KIT    |
| 1K    | Brake Ring Spring Retainer Screw  | IN KIT    | 36B   | Drive Gear                      | IN KIT    |
| 1L    | Spool Tension Shim                | IN KIT    | 37    | Crank Shaft Ball Bearing - L    | SW017-01  |
| 1M    | Spool Shaft Ball Bearing - Palm   | IN KIT    | 38    | E-Clip                          | QW120-01  |
| 1N    | Clip Ring                         | IN KIT    | 39    | Crank Shaft Retainer            | DW002-02  |
| 2     | Spool Assembly                    | DW321-09  | 40    | Crank Shaft Retainer Screw      | JX107-02  |
| 3     | Clip Ring                         | EX080-01  | 41    | Crank Shaft                     | EW008-01  |
| 4     | Spool Shaft Ball Bearing - Gear   | EX017-02  | 42    | O/S Drive Gear                  | DW112-01  |
| 5     | E-Clip                            | NX090-01  | 43    | Trip Ratchet                    | DW083-01  |
| 6     | Stabilizer Bar - A                | DW061-01  | 44    | Trip Ratchet Washer             | QW111-01  |
| 7     | Frame                             | N/A       | 45    | Drag Disc                       | UX059-01  |
| 8     | Thumb Bar                         | DW009-02  | 46    | Drag Washer                     | EW045-01  |
| 9     | Thumb Bar Screw                   | CW125-01  | 47    | One Way Clutch Sleeve           | UX052-01  |
| 10    | E-Clip                            | NX092-01  | 48    | Gear Side Cover Assembly        | DW324-19  |
| 11    | Worm Shaft Bushing - Palm         | AB067-01  | 49    | Gear Side Cover Screw           | BV123-05  |
| 13    | Worm Shaft Kit Includes           | HV4072-02 | 50    | Tension Knob O-Ring             | IN KIT    |
| 13A   | Worm Shaft                        | IN KIT    | 51    | Tension Knob Ball Bearing       | IN KIT    |
| 13B   | Line Guide Pawl                   | IN KIT    | 52    | Spool Tension Knob Kit includes | DW4033-07 |
| 13C   | Line Guide Carrier Washer         | IN KIT    | 52A   | Spool Tension Knob              | IN KIT    |
| 14    | Worm Shaft Guide                  | DW016-01  | 52B   | Spool Cushion Washer            | IN KIT    |
| 15    | Side Cover Locking Lever          | YX119-02  | 52C   | Spool Tension Collar            | IN KIT    |
| 16    | Side Cover Locking Lever Spring   | ZW096-01  | 52D   | Spool Tension Washer            | IN KIT    |
| 17    | Hood Screw                        | HX107-02  | 53    | Crank Shaft Ball Bearing        | TW058-01  |
| 18    | Hood                              | DW027-06  | 54    | Crank Shaft Ball Bearing Washer | TW035-02  |
| 19    | Oil Cap Screw                     | DW150-07  | 55    | Drag Click Spring Assembly      | YX4114-02 |
| 20    | Stabilizer Bar - B                | WP061-01  | 56    | Drag "D" Washer                 | JX046-01  |
| 21    | Line Guide Carrier                | DW047-04  | 57    | Star Drag Washer                | ZW032-01  |
| 22    | Line Guide Carrier Screw          | ZW007-01  | 58    | Star Drag                       | DW055-07  |
| 23    | Worm Shaft Bushing - Gear Side    | DW068-01  | 59    | Handle Washer                   | NX054-01  |
| 24    | O/S Pinion Gear Washer            | EX035-01  | 60    | Handle Assembly                 | HX318-01  |
| 25    | O/S Pinion Gear                   | DW085-01  | 61    | Handle Nut                      | DW003-05  |
| 26    | E-Clip                            | NX090-01  | 62    | Handle Nut Cap                  | DW034-02  |
| 27    | Kick Lever Spring                 | GX097-01  | 63    | Handle Nut Cap Screw            | DW050-02  |