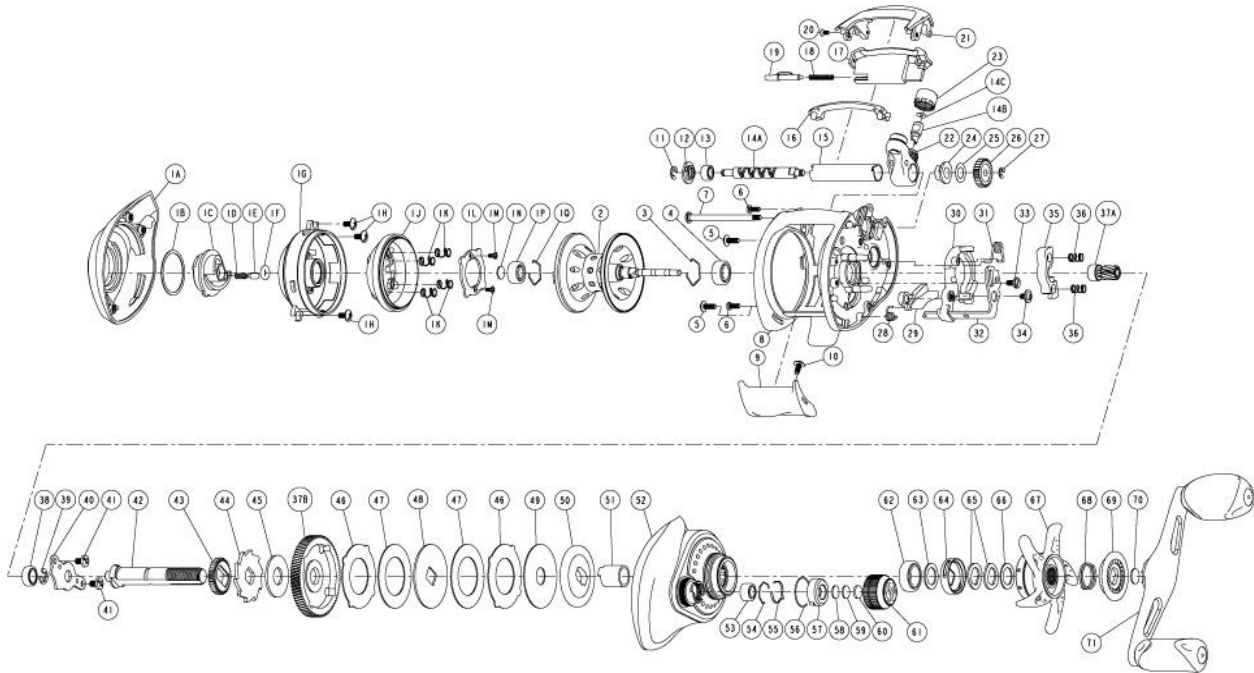


# QUANTUM<sup>®</sup>

## RX150SPT



| Quantum RX150SPT Bait Cast Reel Part List |  |           |                            |                                     |           |
|---|--|-----------|----------------------------|-------------------------------------|-----------|
| Key #                                     | Description                            | Part No.  | Key #                      | Description                         | Part No.  |
| 1   | Palm Side Cover Kit include            | PW4023-02 | 29                         | Kick Lever                          | PW077-01  |
|   | 1A - Palm Side Cover Assembly          | PW323-02  | 30                         | Release Slider                      | PW039-01  |
|   | 1B - Centrifugal Dial Washer           | DW111-01  | 31                         | Release Slider Spring               | YW104-01  |
|   | 1C - Centrifugal Dial Assembly         | PW326-03  | 32                         | Release Slider Link                 | PW036-01  |
|   | 1D - Centrifugal Dial Click Spring     | YW114-01  | 33                         | Release Slider Link Screw           | EW125-01  |
|   | 1E - Centrifugal Dial Click Pawl       | PW098-01  | 34                         | Release Slider Screw                | CX076-03  |
|   | 1F - Centrifugal Dial Friction Ring    | NX105-01  | 35                         | Pinion Yoke                         | PW025-01  |
|   | 1G - Spool Cover                       | PW051-01  | 36                         | Yoke Spring                         | GX040-01  |
|   | 1H - Spool Cover Screw                 | EW123-01  | 37                         | Gear Kit Include                    | YW4011-01 |
|   | 1J - Brake Ring Assembly               | PW342-01  | 37A - Pinion Gear Assembly | YW311-01                            |           |
|   | 1K - Brake Ring Slider Spring          | DW070-01  | 37B - Drive Gear           | YW012-01                            |           |
|   | 1L - Brake Ring Slider Spring Retainer | PW129-01  | 38                         | Crank Shaft Ball Bearing - L        | SW017-01  |
|   | 1M - Brake Ring Spring Retainer Screw  | DW107-01  | 39                         | E-Clip                              | QW120-01  |
|   | 1N - Spool Tension Shim                | QW032-04  | 40                         | Crank Shaft Retainer                | PW002-01  |
|   | 1P - Spool Shaft Ball Bearing - Palm   | QV017-01  | 41                         | Crank Shaft Retainer Screw          | JX107-02  |
|   | 1Q - Clip Ring                         | HV080-01  | 42                         | Crank Shaft                         | PW008-01  |
| 2   | Spool Assembly                         | PW321-02  | 43                         | O/S Drive Gear                      | PW112-01  |
| 3   | Clip Ring                              | EX080-01  | 44                         | Trip Ratchet                        | PW083-01  |
| 4   | Spool Shaft Ball Bearing - Gear        | EX017-02  | 45                         | Trip Ratchet Washer                 | YW111-01  |
| 5   | Gear Side Cover Screw - B              | QW053-07  | 46                         | Drag Key Washer                     | PW048-01  |
| 6   | Gear Side Cover Screw - A              | LF057-01  | 47                         | Drag Disc - A                       | PW059-01  |
| 7   | Stabilizer Bar - A                     | PW061-01  | 48                         | Drag "D" Washer                     | YW045-01  |
| 8   | Frame                                  | PW001-05  | 49                         | Drag Disc - B                       | YW059-01  |
| 9   | Thumb Bar                              | PW009-01  | 50                         | Drag Washer                         | PW045-01  |
| 10  | Thumb Bar Screw                        | CW125-01  | 51                         | One Way Clutch Sleeve               | UX052-01  |
| 11  | E-Clip                                 | NX092-01  | 52                         | Gear Side Cover Assembly            | PW324-05  |
| 12  | Bearing Retainer                       | PW067-01  | 53                         | Tension Knob Ball Bearing           | SW117-01  |
| 13  | Worm Shaft Ball Bearing                | XX117-01  | 54                         | Tension Knob Ball Bearing Clip Ring | PW080-01  |
| 14  | Worm Shaft Kit Include                 | HV4072-02 | 55                         | Tension Knob Click Spring           | PW114-01  |
|   | 14A - Worm Shaft                       | HV072-02  | 56                         | Tension Knob Click Ratchet Retainer | YW080-01  |
|   | 14B - Line Guide Pawl                  | CX006-01  | 57                         | Tension Knob Click Ratchet          | PW113-01  |
|   | 14C - Line Guide Carrier Washer        | BV035-01  | 58                         | Spool Tension Washer                | QW032-04  |
| 15  | Worm Shaft Guide                       | DW016-01  | 59                         | Spool Tension Support Washer        | PW032-01  |
| 16  | Top Support                            | PW094-01  | 60                         | Spool Cushion Washer                | EX082-02  |
| 17  | Front Support                          | PW099-01  | 61                         | Spool Tension Knob Assembly         | PW333-02  |
| 18  | Side Cover Locking Lever Spring        | ZW096-01  | 62                         | Crank Shaft Ball Bearing            | TW058-01  |
| 19  | Side Cover Locking Lever               | YX119-02  | 63                         | Crank Shaft Ball Bearing Washer     | TW035-02  |
| 20  | Hood Screw                             | DW107-01  | 64                         | Drag Click Spring Assembly          | YX4114-01 |
| 21  | Hood                                   | PW027-02  | 65                         | Spring "D" Washer                   | JX046-01  |
| 22  | Line Guide Carrier Assembly            | PW347-02  | 66                         | Star Drag Washer                    | ZW032-01  |
| 23  | Line Guide Carrier Screw               | ZW007-01  | 67                         | Star Drag                           | PW055-02  |
| 24  | Worm Shaft Bushing - Gear Side         | PW068-01  | 68                         | Handle Ratchet Spring               | UX040-01  |
| 25  | O/S Pinion Gear Washer                 | EX035-01  | 69                         | Handle Ratchet                      | UX054-01  |
| 26  | O/S Pinion Gear                        | PW085-01  | 70                         | Handle Washer                       | UX032-01  |
| 27  | E-Clip                                 | NX090-01  | 71                         | Handle Assembly                     | GW318-01  |
| 28  | Kick Lever Spring                      | GX097-01  |                            |                                     |           |