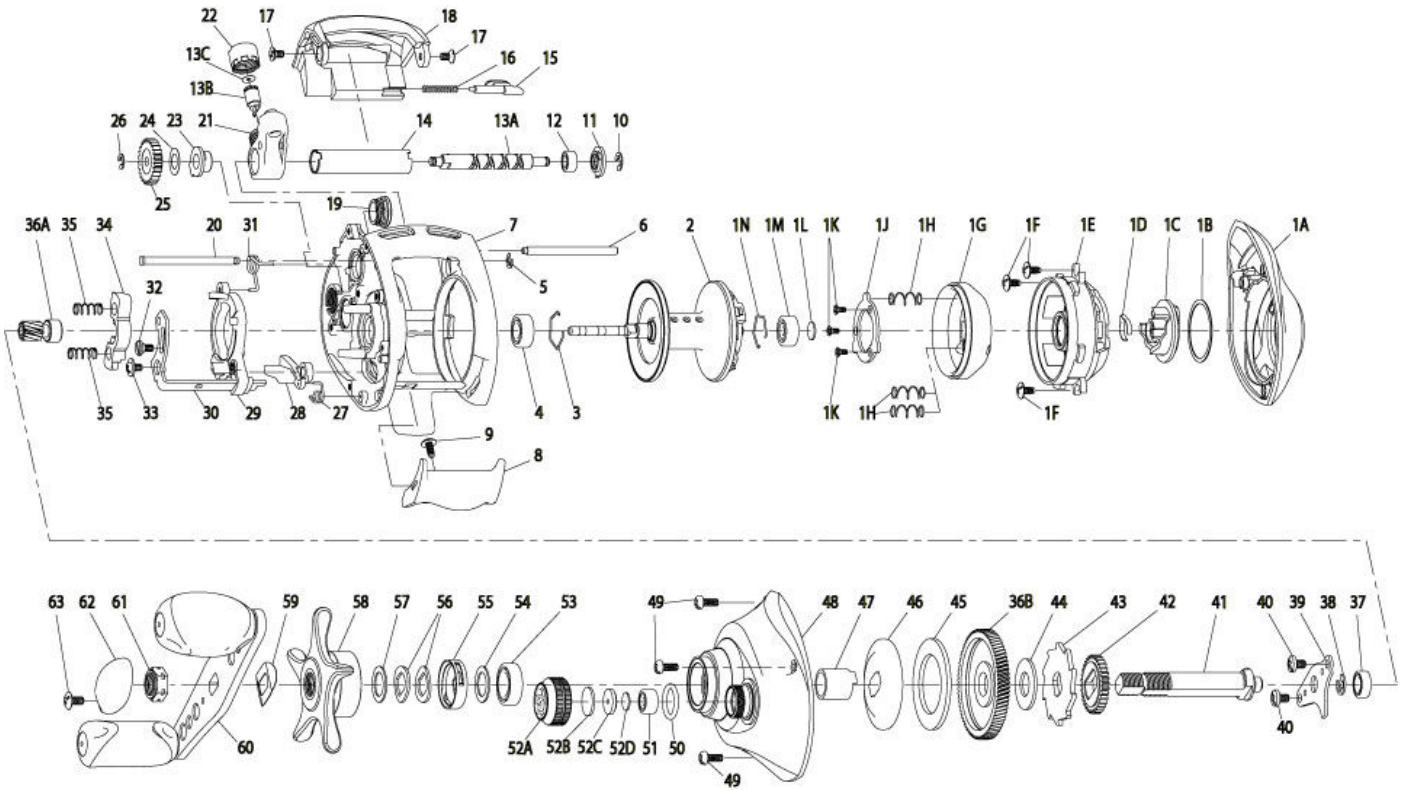




For part availability and pricing,
please call (800) 588-9030

KT101SPT



Quantum KT101SPT Bait Cast Reel Part List						
Key #	Description	Part No.	Key #	Description	Part No.	
1	Palm Side Cover Kit includes	FW4023-03	28	Kick Lever	FW077-01	
	1A - Palm Side Cover Assembly	N/A	29	Release Slider	FW039-01	
	1B - Centrifugal Dial Washer	N/A	30	Release Slider Link	FW036-01	
	1C - Centrifugal Dial Assembly	N/A	31	Release Slider Spring	FW104-01	
	1D - Centrifugal Dial Spring	N/A	32	Release Slider Link Screw	EW125-01	
	1E - Spool Cover	N/A	33	Release Slider Screw	CX076-03	
	1F - Spool Cover Screw	N/A	34	Pinion Yoke	FW025-01	
	1G - Brake Ring Assembly	N/A	35	Yoke Spring	GX040-01	
	1H - Brake Ring Slider Spring	N/A	36	Gear Kit Includes	UX4011-02	
	1J - Brake Ring Slider Spring Retainer	N/A	36A - Pinion Gear Assembly	N/A		
	1K - Brake Ring Spring Retainer Screw	N/A	36B - Drive Gear	N/A		
	1L - Spool Tension Shim	N/A	37	Crank Shaft Ball Bearing - L	SW017-01	
	1M - Spool Shaft Ball Bearing - Palm	N/A	38	E-Clip	QW120-01	
	1N - Clip Ring	N/A	39	Crank Shaft Retainer	DW002-01	
	2	Spool Assembly	EW321-06	40	Crank Shaft Retainer Screw	JX107-02
	3	Clip Ring	EX080-01	41	Crank Shaft	DW008-04
	4	Spool Shaft Ball Bearing - Gear	EX017-02	42	O/S Drive Gear	DW112-01
5	E-Clip	NX090-01	43	Trip Ratchet	DW083-02	
6	Stabilizer Bar - A	DW061-02	44	Trip Ratchet Washer	QW111-01	
7	Frame	FW001-10	45	Drag Disc	UX059-01	
8	Thumb Bar	FW009-01	46	Drag Washer	DW045-01	
9	Thumb Bar Screw	CW125-01	47	One Way Clutch Sleeve	UX052-01	
10	E-Clip	NX092-01	48	Gear Side Cover Assembly	DW324-12	
11	Bearing Retainer	DW067-01	49	Gear Side Cover Screw	BV123-03	
12	Worm Shaft Ball Bearing	XX117-01	50	Tension Knob O-Ring	QW101-01	
13	Worm Shaft Kit includeS	HV4072-01	51	Tension Knob Ball Bearing	SW117-01	
	13A - Worm Shaft	N/A	52	Spool Tension Knob Kit Include	DW4033-06	
	13B - Line Guide Pawl	N/A	52A - Spool Tension Knob Assembly	N/A		
	13C - Line Guide Carrier Washer	N/A	52B - Spool Cushion Washer	N/A		
14	Worm Shaft Guide	DW016-02	52C - Spool Tension Collar	N/A		
15	Side Cover Locking Lever	TX119-02	52D - Spool Tension Washer	N/A		
16	Side Cover Locking Lever Spring	ZW096-01	53	Crank Shaft Ball Bearing	TW058-01	
17	Hood Screw	HX107-02	54	Crank Shaft Ball Bearing Washer	ZW032-01	
18	Hood	FW027-03	55	Drag Click Spring Assembly	YX4114-01	
19	Oil Cap Screw	DW150-04	56	Drag "D" Washer	JX046-01	
20	Stabilizer Bar - B	WP061-02	57	Star Drag Washer	ZW032-01	
21	Line Guide Carrier	DW047-03	58	Star Drag Assembly	YX355-12	
22	Line Guide Carrier Screw	ZW007-02	59	Handle Washer	NX054-01	
23	Worm Shaft Bushing - Gear Side	DW068-01	60	Handle Assembly	AB318-01	
24	O/S Pinion Gear Washer	EX035-01	61	Handle Nut	QW003-02	
25	O/S Pinion Gear	DW085-01	62	Handle Nut Cap	JX034-04	
26	E-Clip	NX090-01	63	Handle Nut Cap Screw	QW123-01	
27	Kick Lever Spring	MX097-01				