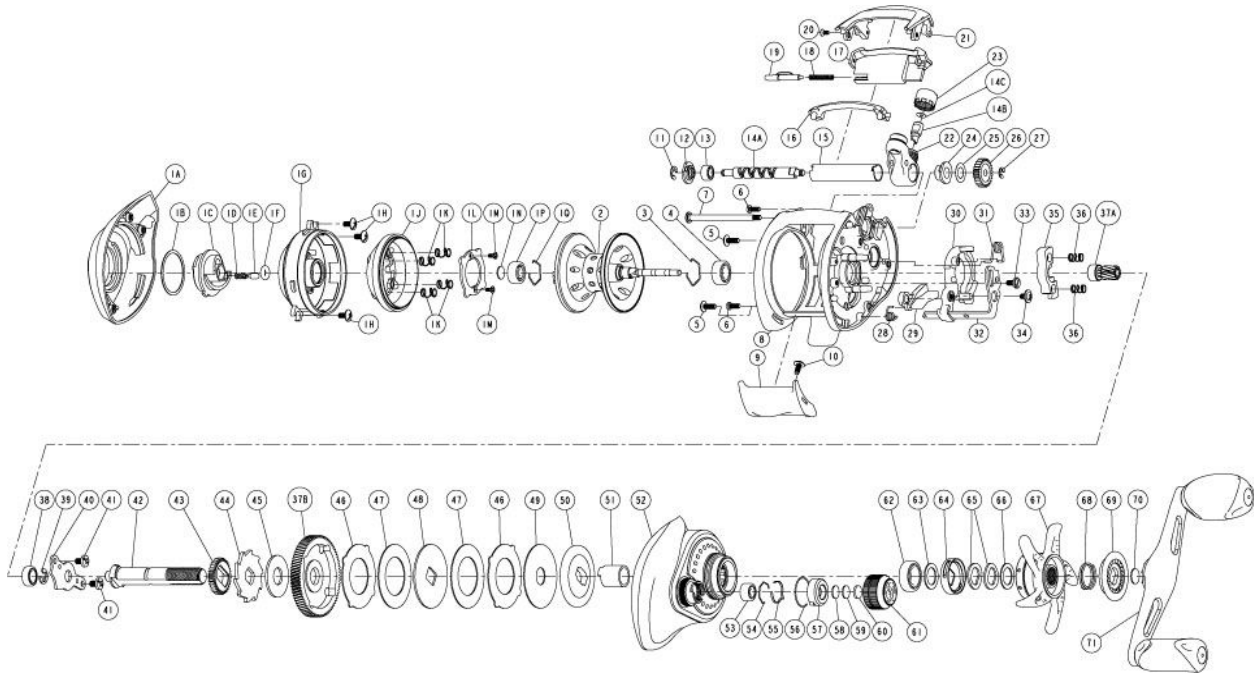


QUANTUM[®]

ES150SPT



| Quantum ES150SPT Bait Cast Reel Part List | | | | | |
|---|--|-----------|----------------------------|-------------------------------------|-----------|
| Key # | Description | Part No. | Key # | Description | Part No. |
| 1 | Palm Side Cover Kit include | PW4023-03 | 29 | Kick Lever | PW077-01 |
| | 1A - Palm Side Cover Assembly | N/A | 30 | Release Slider | PW039-01 |
| | 1B - Centrifugal Dial Washer | N/A | 31 | Release Slider Spring | YV104-01 |
| | 1C - Centrifugal Dial Assembly | N/A | 32 | Release Slider Link | PW036-01 |
| | 1D - Centrifugal Dial Click Spring | N/A | 33 | Release Slider Link Screw | EW125-01 |
| | 1E - Centrifugal Dial Click Pawl | N/A | 34 | Release Slider Screw | CX076-03 |
| | 1F - Centrifugal Dial Friction Ring | N/A | 35 | Pinion Yoke | PW025-01 |
| | 1G - Spool Cover | N/A | 36 | Yoke Spring | GX040-01 |
| | 1H - Spool Cover Screw | N/A | 37 | Gear Kit Include | YW4011-01 |
| | 1J - Brake Ring Assembly | N/A | 37A - Pinion Gear Assembly | N/A | |
| | 1K - Brake Ring Slider Spring | N/A | 37B - Drive Gear | N/A | |
| | 1L - Brake Ring Slider Spring Retainer | N/A | 38 | Crank Shaft Ball Bearing - L | SW017-01 |
| | 1M - Brake Ring Spring Retainer Screw | N/A | 39 | E-Clip | QW120-01 |
| | 1N - Spool Tension Shim | N/A | 40 | Crank Shaft Retainer | PW002-01 |
| | 1P - Spool Shaft Ball Bearing - Palm | N/A | 41 | Crank Shaft Retainer Screw | JX107-02 |
| | 1Q - Clip Ring | N/A | 42 | Crank Shaft | PW008-01 |
| 2 | Spool Assembly | PW321-05 | 43 | O/S Drive Gear | PW112-01 |
| 3 | Clip Ring | EX080-01 | 44 | Trip Ratchet | PW083-01 |
| 4 | Spool Shaft Ball Bearing - Gear | EX017-02 | 45 | Trip Ratchet Washer | YW111-01 |
| 5 | Gear Side Cover Screw - B | QW053-07 | 46 | Drag Key Washer | PW048-01 |
| 6 | Gear Side Cover Screw - A | LF057-01 | 47 | Drag Disc - A | PW059-01 |
| 7 | Stabilizer Bar - A | PW061-01 | 48 | Drag "D" Washer | YW045-01 |
| 8 | Frame | PW001-07 | 49 | Drag Disc - B | YW059-01 |
| 9 | Thumb Bar | PW009-02 | 50 | Drag Washer | PW045-01 |
| 10 | Thumb Bar Screw | CW125-01 | 51 | One Way Clutch Sleeve | UX052-01 |
| 11 | E-Clip | NX092-01 | 52 | Gear Side Cover Assembly | PW324-07 |
| 12 | Bearing Retainer | PW067-01 | 53 | Tension Knob Ball Bearing | SW117-01 |
| 13 | Worm Shaft Ball Bearing | XX117-01 | 54 | Tension Knob Ball Bearing Clip Ring | PW080-01 |
| 14 | Worm Shaft Kit Include | HV4072-02 | 55 | Tension Knob Click Spring | PW114-01 |
| | 14A - Worm Shaft | N/A | 56 | Tension Knob Click Ratchet Retainer | YW080-01 |
| | 14B - Line Guide Pawl | N/A | 57 | Tension Knob Click Ratchet | PW113-01 |
| | 14C - Line Guide Carrier Washer | N/A | 58 | Spool Tension Washer | QW032-04 |
| 15 | Worm Shaft Guide | DW016-01 | 59 | Spool Tension Support Washer | PW032-01 |
| 16 | Top Support | PW094-03 | 60 | Spool Cushion Washer | EX082-02 |
| 17 | Front Support | PW099-02 | 61 | Spool Tension Knob Assembly | PW333-03 |
| 18 | Side Cover Locking Lever Spring | ZW096-01 | 62 | Crank Shaft Ball Bearing | TW058-01 |
| 19 | Side Cover Locking Lever | YX119-02 | 63 | Crank Shaft Ball Bearing Washer | TW035-02 |
| 20 | Hood Screw | DW107-01 | 64 | Drag Click Spring Assembly | YX4114-01 |
| 21 | Hood | PW027-03 | 65 | Spring "D" Washer | JX046-01 |
| 22 | Line Guide Carrier Assembly | PW347-03 | 66 | Star Drag Washer | ZW032-01 |
| 23 | Line Guide Carrier Screw | ZW007-01 | 67 | Star Drag | PW055-03 |
| 24 | Worm Shaft Bushing - Gear Side | PW068-01 | 68 | Handle Ratchet Spring | UX040-01 |
| 25 | O/S Pinion Gear Washer | EX035-01 | 69 | Handle Ratchet | UX054-01 |
| 26 | O/S Pinion Gear | PW085-01 | 70 | Handle Washer | UX032-01 |
| 27 | E-Clip | NX090-01 | 71 | Handle Assembly | GW318-11 |
| 28 | Kick Lever Spring | GX097-01 | | | |