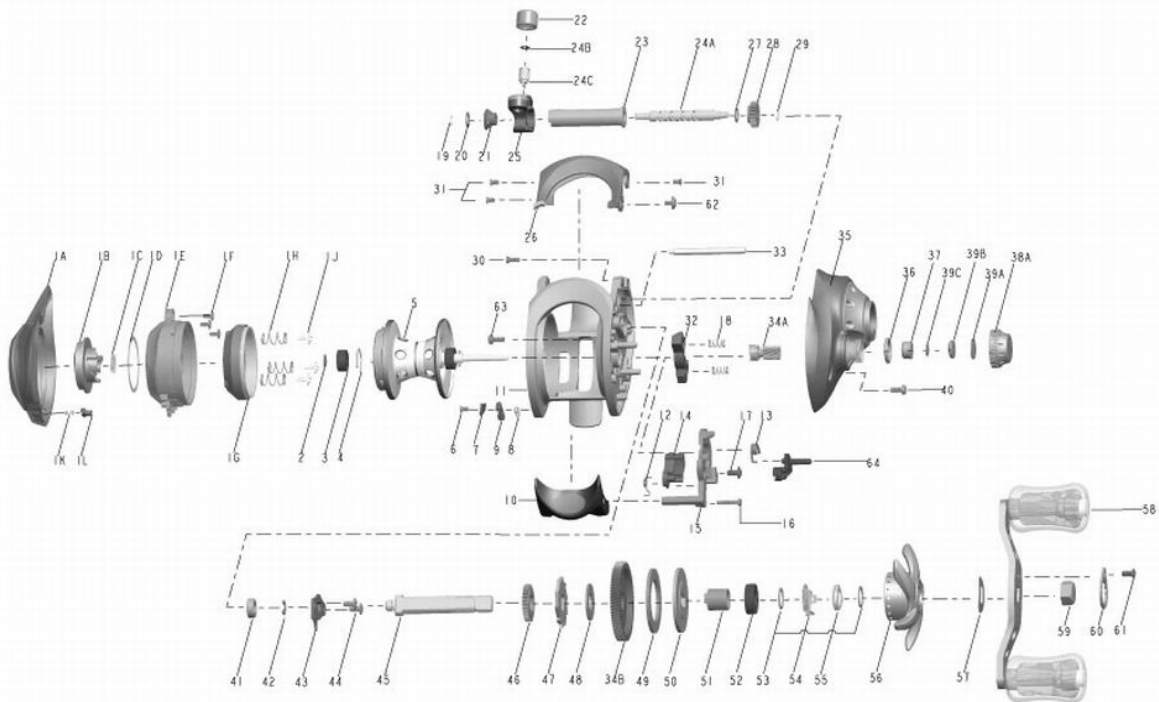


# QUANTUM<sup>®</sup>

**Code**  
**CD860CXA**



**Quantum Code CD860CXA Bait Cast Reel Part List**

Key #	Description	Part No.	Key #	Description	Part No.
1	Palm Side Cover Kit	KW4023-02	28	Worm Shaft Pinion Gear	HV085-01
1A	Palm Side Cover Assembly		29	Worm Shaft E-Clip (Gear Side)	NX090-01
1B	Cast Control Dial		30	Gear Side Cover Screw "B"	LW123-01
1C	Control Dial Clicker Spring		31	Front Support Screw "A"	KW107-01
1D	Control Dial Washer		32	Pinion Yolk	KW025-01
1E	Spool Cover		33	Pillar	KW061-01
1F	Spool Cover Screw		34	Gear Kit	LW4011-01
1G	Brake Ring Assembly		34A	Pinion Gear	
1H	Brake Ring Spring		34B	Drive Gear	
1J	Brake Ring Screw		35	Gear Side Cover Assembly	KW324-07
1K	Side Cover Locking Pin Spring		36	Spool Tension Knob O-Ring	QW101-01
1L	Side Cover Locking Pin		37	Spool Tension Knob Bearing	SW117-01
2	Spool Shaft Washer (Palm Side)		38	Spool Tension Knob Kit	KW4033-01
3	Spool Shaft Ball Bearing (Palm Side)		38A	Spool Tension Knob	
4	Bearing Clip Ring		39	Spool Tension Washer Kit	
5	Spool Assembly		39	Spool Tension Washer Kit	QW4032-01
6	Locking Lever Retainer Screw	QW032-04	39A	Spool Cushion Washer	
7	Locking Lever Retainer	QV017-01	39B	Spool Tension Collar	
8	Locking Lever Spring	HV080-01	39C	Spool Tension Washer	
9	Locking Lever	KW321-02	40	Gear Side Cover Screw "A"	BV123-01
10	Thumb Bar Assembly	KW107-01	41	Crank Shaft Bearing (Frame Side)	SW017-01
11	Frame	KW056-01	42	Crank Shaft E-Clip	QW120-01
12	Kick Lever Spring	KW096-01	43	Crank Shaft Retainer Plate	KW002-01
13	Release Slider Spring	KW119-01	44	Crank Shaft Retainer Plate Screw	QW125-02
14	Kick Lever	KW309-02	45	Crank Shaft	KW008-01
15	Release Slider	KW001-05	46	Worm Shaft Drive Gear	ZW112-01
16	Thumb Bar Screw	KW097-01	47	Trip Ratchet	KW083-01
17	Release Slider Screw	MW104-01	48	Trip Ratchet Washer	QW111-01
18	Pinion Yolk Spring	KW077-01	49	Drag Washer	UX059-01
19	Worm Shaft E-Clip (Palm Side)	KW039-01	50	Drag Key Washer	KW045-01
20	Worm Shaft Washer (Palm Side)	ZW053-01	51	One Way Clutch Sleeve	KW052-01
21	Worm Shaft Bushing	KW125-01	52	Crank Shaft Bearing (Handle Side)	TW058-02
22	Line Guide Pawl Screw	KW040-01	53	Star Drag Washer	KW032-01
23	Worm Shaft Guide	KW090-01	54	Star Drag Clicker Spring Assembly	ZW4114-01
24	Worm Shaft Kit	KW038-01	55	Star Drag Spring Washer	JX046-01
24A	Worm Shaft	KW067-01	56	Star Drag Assembly	KW355-01
24B	Line Guide Pawl Washer	KW007-01	57	Handle Spring Washer	QW054-01
24C	Line Guide Pawl	KW016-01	58	Handle Assembly	KW318-02
25	Line Guide Carrier Assembly	KW4072-01	59	Handle Nut	KW003-01
26	Front Support		60	Handle Nut Retainer	KW034-02
27	Worm Shaft Washer (Gear Side)		61	Handle Nut Retainer Screw	KW057-01
			63	Gear Side Cover Screw "C"	KW123-01
			64	Flippin' Lever	KW087-01