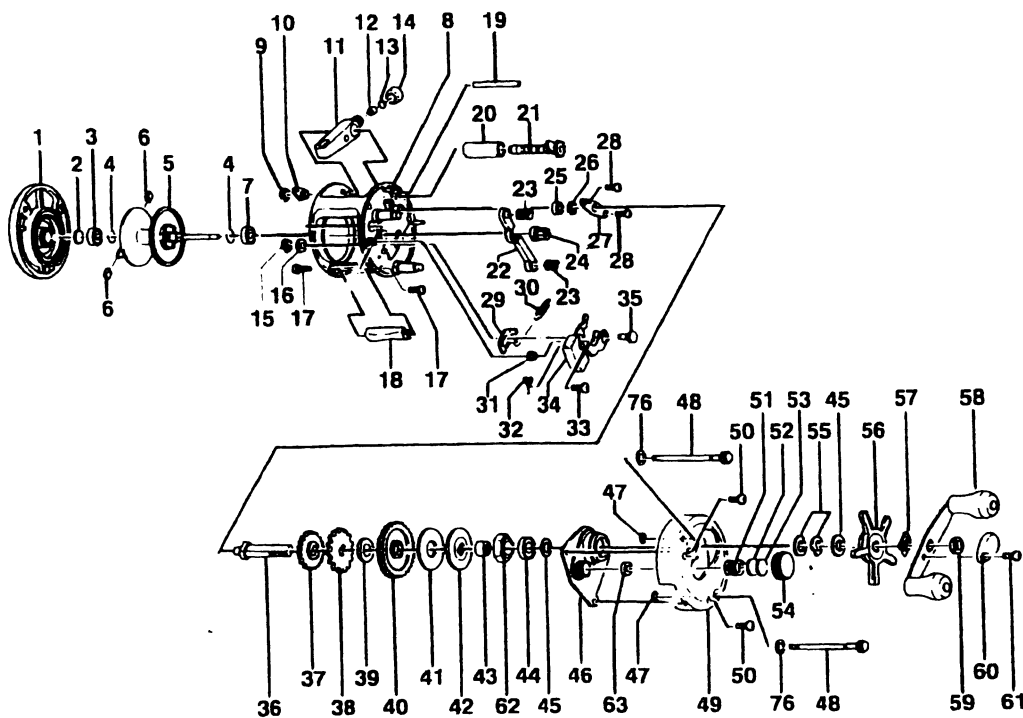


SPECIFICATIONS:

Medium Freshwater
 165 yds / 12 lb line Capacity
 Gear Ratio:
 IR4C / BT200C - 5.2:1
 IR4CX - 6.3:1
 9.5 oz. Weight
 Thumb Button Clutch
 Continuous Anti-Reverse
 Bearings:
 IR4C - 3 BB; 1 RB
 BT200C - 1 BB; 1 RB
 Retrieve Rate (inches per handle turn):
 IR4C / BT200C - 21"
 IR4CX - 25"



FEATURES:

Machined, 1-Piece Aluminum Frame
 Centrifugal Brake Cast Control System
 Machine Forges Aluminum Spool
 Brass Magnum Gears
 Stainless Steel Bearings
 Aluminum Side Plates
 Color:
 IR4C / IR4CX - Light Gold
 BT200C - Gold

Key		Part No.				Key		Part No.			
No.	Description	IR4C	IR4CX	BT200C	Price	No.	Description	IR4C	IR4CX	BT200C	Price
1	Right Side Cover Ass'y	XX323-03	⊘	LV323-03	13.96	34	Release Slider Assy	JX339-02	⊘	⊘	1.85
2	Spool Shaft Washer	XX038-02	⊘	⊘	0.27	35	Post - Kick Lever Guide	JX102-01	⊘	⊘	0.91
3	Bearing - Spool Shaft	JX106-01	⊘	⊘	6.52	36	Crank Shaft	JX008-01	⊘	⊘	2.97
4	Clip Ring	JX080-01	⊘	⊘	0.27	37	O/S Drive Gear	JX112-01	⊘	⊘	0.47
5	Spool Assy	JX321-02	⊘	⊘	14.16	38	Trip Ratchet	JX083-01	⊘	⊘	0.96
6	Brake Shoe "B"	XX044-01	⊘	⊘	0.27	39	Ratchet Washer	JX111-01	⊘	W111-0	0.47
7	Bearing - Spool Shaft	JX106-01	⊘	⊘	6.52	40	Drive Gear	JX012-01	XX012-01	JX012-01	7.90
8	Frame Assy	JX301-04	JX301-05	JX301-10	30.54	41	Drag Disc	JX059-01	⊘	⊘	1.48
9	E-Clip - Worm Shaft	QW120-01	⊘	⊘	0.27	42	Drag "D" Washer	JX045-01	⊘	⊘	0.91
10	Bushing - Worm Shaft	JX067-01	⊘	⊘	0.32	43	Sleeve - One Way Bearin	CW052-01	⊘	ZW052-0	2.97
11	Line Guide Carrier Assy	JX347-02	⊘	⊘	2.39	44	Bearing - Crank Shaft (U)	TW058-01	⊘	⊘	7.43
12	Line Guide Pawl	JX006-01	⊘	JX006-02	1.85	45	Crank Shaft Washer	JX038-01	⊘	⊘	0.32
13	Washer - Line Guide Pawl	JX035-01	⊘	⊘	0.27	46	Crank Shaft Guide	JX066-02	⊘	⊘	3.45
14	Screw - Line Guide Carrier	JX007-02	⊘	⊘	0.54	47	O-Ring - Thumb Screw	JX073-01	⊘	⊘	0.32
15	E-Clip - Kick Lever Guide Post	NX092-01	⊘	⊘	0.31	48	Thumb Screw	N/A	⊘	JX074-03	1.28
16	Washer - Kick Lever Guide	XX035-01	⊘	⊘	0.27	48	Thumb Screw Assy	XX374-01	⊘	N/A	1.28
17	Screw - Thumb Rest	JX050-01	⊘	⊘	0.32	49	Left Side Cover	JX024-04	JX024-07	JX024-14	10.04
18	Thumb Rest	JX009-02	⊘	⊘	0.64	50	Screw - Left Side Cover	QW123-01	⊘	⊘	0.15
19	Line Guide Carrier Guide	JX061-01	⊘	⊘	1.01	51	Spring - Tension knob	JX105-01	⊘	⊘	0.32
20	Worm Shaft Guide	JX016-01	⊘	⊘	0.74	52	Washer - Spool Tension	QW032-02	⊘	⊘	0.54
21	Worm Shaft Assy	JX372-01	⊘	⊘	7.11	53	Washer - Cushion	JX082-01	⊘	⊘	0.22
22	Pinion Yoke	JX025-01	⊘	⊘	0.54	54	Spool Tension Knob	XX033-01	⊘	JX033-02	2.90
23	Yoke Spring	JX040-01	⊘	⊘	0.22	55	Spring "D" Washer	JX046-01	⊘	⊘	0.69
24	Pinion Gear	JX011-01	XX011-01	JX011-01	5.52	56	Star Drag	N/A	⊘	JX055-02	3.55
25	Bushing - Crank shaft (L)	JX017-01	⊘	⊘	0.79	56	Star Drag Assy	XX355-02	⊘	N/A	3.55
26	E-Clip - Crank Shaft	QW120-01	⊘	⊘	0.27	57	Handle Washer	NX054-01	⊘	⊘	0.27
27	Retainer - Crank Shaft	JX002-01	⊘	⊘	0.59	58	Handle Assy	UW318-01	⊘	W318-0	7.21
28	Screw - Crank Shaft Retainer	JX107-01	⊘	⊘	0.15	59	Handle Nut	QW003-01	⊘	⊘	0.37
29	Kick Lever	JX077-01	⊘	⊘	0.59	60	Handle Nur Cap	JX034-02	⊘	⊘	0.37
30	Spring - Kick Lever	JX097-01	⊘	⊘	0.15	61	Handle Nur Cap Screw	QW123-01	⊘	⊘	0.15
31	Bushing - Release Slider Guid	JX068-01	⊘	⊘	1.11	62	One Way Bearing	UQ063-02	⊘	ZW063-0	9.55
32	Spring - Release Slider	JX104-01	⊘	⊘	0.22	65	Washer - Thumb Screw	JX121-01	⊘	N/A	0.22
33	Screw - Release Slider	XX050-01	⊘	⊘	0.15						

MODEL	EFFECTIVE DATE OF	DISCONTINUED:
INTRODUCED: 1998	PARTS LIST/DIAGRAM: Sept. '98	N / A