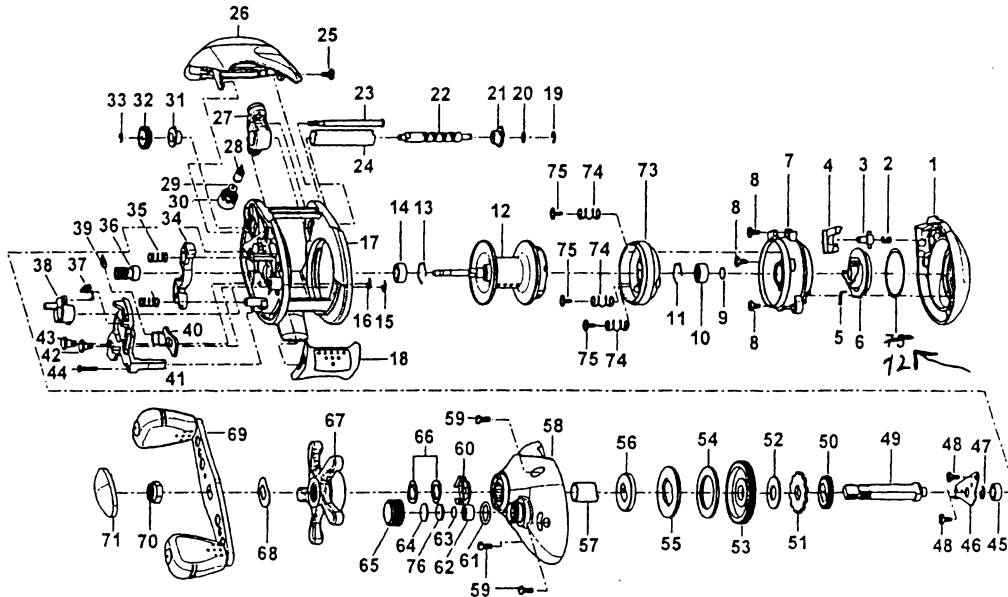


### SPECIFICATIONS:

Medium FW / Light SW  
 Line Capacity: 125 yds. / 12 lb.  
 Gear Ratio: 5.1:1  
 Weight: 8.4 oz.  
 Bearings: 3BB, 1RB

### FEATURES:

ACS External Centrifugal Cast Control  
 Continuous Anti-Reverse  
 One-Piece Frame and Spool  
 Flippin' Switch  
 Quick Release Side Cover  
 Color: Gray



Key #	Description	Part No.		Key #	Description	Part No.	
		AC501CX	AC401C			AC501CX	AC401C
1	Palm Side Cover Assembly	BX323-01	BX323-02	40	Kick Lever	BX077-01	⇐⇐⇐
2	Palm Side Cover Locking Spring	QV096-01	⇐⇐⇐	41	Release Slider	BX039-01	⇐⇐⇐
3	Palm Side Cover Locking Pin	HV095-01	⇐⇐⇐	42	Release Slider Guide Pin	HV102-01	⇐⇐⇐
4	Palm Side Cover Release Button	HV119-01	⇐⇐⇐	43	Kick Lever Guide Pin	HV118-01	⇐⇐⇐
5	Centrifugal Dial Spring	HV108-01	⇐⇐⇐	44	Thumb Bar Screw	ZW053-01	⇐⇐⇐
6	Centrifugal Dial	BX026-01	⇐⇐⇐	45	Crank Shaft Bearing (L)	SW017-01	⇐⇐⇐
7	Spool Cover	BX051-01	⇐⇐⇐	46	E-Clip	QW120-01	⇐⇐⇐
8	Spool Cover Screw	QV125-02	⇐⇐⇐	47	Crank Shaft Retainer	HV002-01	⇐⇐⇐
9	Spool Shaft Washer	QW032-04	⇐⇐⇐	48	Crank Shaft Retainer Screw	QV125-02	⇐⇐⇐
10	Spool Shaft Bearing (Palm)	QV017-01	⇐⇐⇐	49	Crank Shaft	HV008-02	⇐⇐⇐
11	Clip Ring	HV080-01	⇐⇐⇐	50	O/S Drive Gear	ZW112-01	⇐⇐⇐
12	Spool Assembly	HV321-03	HV321-04	51	Trip Ratchet	QW083-01	⇐⇐⇐
13	Clip Ring	HV080-01	⇐⇐⇐	52	Trip Ratchet Washer	QW111-01	⇐⇐⇐
14	Spool Shaft Bearing (Gear)	JX106-01	⇐⇐⇐	53	Drive Gear	HV012-02	XV012-02
15	E-Clip	NX092-01	⇐⇐⇐	54	Drag Disc	HV059-01	⇐⇐⇐
16	E-Clip	NX092-01	⇐⇐⇐	55	Drag Key Washer	HV045-01	⇐⇐⇐
17	Frame	BX001-01	⇐⇐⇐	56	Link	HV036-01	⇐⇐⇐
18	Thumb Bar	BX009-01	⇐⇐⇐	57	One Way Bearing Sleeve	HV052-01	⇐⇐⇐
19	E-Clip	NX092-01	⇐⇐⇐	58	Gear Side Cover Assembly	BX324-01	BX324-02
20	Worm Shaft Washer	QW035-03	⇐⇐⇐	59	Gear Side Cover Screw	BV123-02	BV123-01
21	Worm Shaft Bushing (Palm)	HV067-01	⇐⇐⇐	60	Drag Click Spring Assembly	ZW4114	⇐⇐⇐
22	Worm Shaft	HV072-01	⇐⇐⇐	61	Tension Knob O-Ring	QW101-01	⇐⇐⇐
23	Stablizer Bar	ZW061-01	⇐⇐⇐	62	Tension Knob Bearing	SW117-01	N/A
24	Worm Shaft Guide	HV016-01	⇐⇐⇐	62	Tension Knob Bushing	N/A	QW117-01
25	Hood Screw	QV125-02	⇐⇐⇐	63	Spool Tension Washer	QW032-04	⇐⇐⇐
26	Hood Assembly	BX327-01	BX327-02	64	Spool Cushion Washer	QW082-01	⇐⇐⇐
27	Line Guide Carrier Assembly	HV347-02	HV347-01	65	Spool Tension Knob	HV033-02	HV033-01
28	Line Guide Pawl	ZW006-01	⇐⇐⇐	66	Spring "D" Washer	QW046-02	⇐⇐⇐
29	Line Guide Carrier Washer	BV035-01	⇐⇐⇐	67	Star Drag Assembly	HV355-04	HV355-03
30	Line Guide Carrier Screw	ZW007-02	⇐⇐⇐	68	Handle Washer	QW054-01	⇐⇐⇐
31	Worm Shaft Bushing (Gear)	HV068-01	⇐⇐⇐	69	Handle Assembly	HV318-02	HV318-01
32	O/S Pinion Gear	HV085-01	⇐⇐⇐	70	Handle Nut	RV003-02	⇐⇐⇐
33	E-Clip	NX090-01	⇐⇐⇐	71	Handle Nut Cap	RV034-02	RV034-01
34	Pinion Yoke	BX025-01	⇐⇐⇐	72	Centrifugal Dial Washer	QV111-01	⇐⇐⇐
35	Pinion Yoke Spring	QW040-01	⇐⇐⇐	73	Brake Ring Assembly	BX342-01	⇐⇐⇐
36	Pinion Gear Assembly	VW311-02	ZW311-02	74	Brake Ring Slider Spring	QV070-01	⇐⇐⇐
37	Release Slider Spring	BX104-01	⇐⇐⇐	75	Brake Ring Retainer Screw	QV076-01	⇐⇐⇐
38	Fillipping Switch	BX087-02	BX087-01	76	Spool Tension Collar	QW081-01	⇐⇐⇐
39	Kick Lever Spring	QV097-01	⇐⇐⇐				12/99