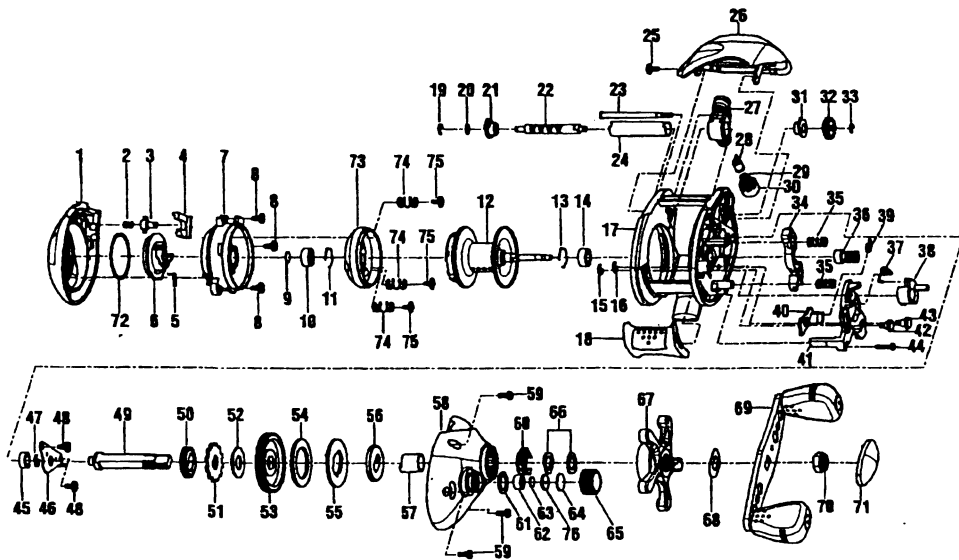


### SPECIFICATIONS:

Medium FW / Light SW  
 Line Capacity: 125 yds. / 12 lb.  
 Gear Ratio: 5.1:1  
 Weight: 8.4 oz.  
 Bearings: 3BB, 1RB

### FEATURES:

ACS External Centrifugal Cast Control  
 Continuous Anti-Reverse  
 One-Piece Frame and Spool  
 Flippin' Switch  
 Quick Release Side Cover  
 Color: Gray



### Key

No.	Part No.	Description
1	HV323-02	Palm Side Cover Assembly
2	QV096-01	Palm Side Cover Locking Spring
3	HV095-01	Palm Side Cover Locking Pin
4	HV119-01	Palm Side Cover Release Button
5	HV108-01	Centrifugal Dial Spring
6	HV026-01	Centrifugal Dial
7	HV051-01	Spool Cover
8	QV125-02	Spool Cover Screw
9	QW032-04	Spool Shaft Washer
10	QV017-01	Spool Shaft Bearing (Palm)
11	HV080-01	Clip Ring
12	HV321-02	Spool Assembly
13	HV080-01	Clip Ring
14	JX106-01	Spool Shaft Bearing (Gear)
15	NX092-01	E-Clip
16	NX092-01	E-Clip
17	HV001-01	Frame
18	HV009-01	Thumb Bar
19	NX092-01	E-Clip
20	QW035-03	Worm Shaft Washer
21	HV067-01	Worm Shaft Bushing (Palm)
22	HV072-01	Worm Shaft
23	ZW061-01	Stablizer Bar
24	HV016-01	Worm Shaft Guide
25	QV125-02	Hood Screw
26	HV327-02	Hood Assembly
27	HV347-01	Line Guide Carrier Assembly
28	ZW006-01	Line Guide Pawl
29	BV035-01	Line Guide Carrier Washer
30	ZW007-01	Line Guide Carrier Screw
31	HV068-01	Worm Shaft Bushing (Gear)
32	HV085-01	O/S Pinion Gear
33	NX090-01	E-Clip
34	HV025-01	Pinion Yoke
35	QW040-01	Pinion Yoke Spring
36	ZW311-01	Pinion Gear Assembly
37	HV104-01	Release Slider Spring
38	HV087-01	Flipping Switch
39	QV097-01	Kick Lever Spring

### Key

No.	Part No.	Description
40	HV077-01	Kick Lever
41	HV039-01	Release Slider
42	HV102-01	Release Slider Guide Pin
43	HV118-01	Kick Lever Guide Pin
44	ZW053-01	Thumb Bar Screw
45	SW017-01	Crank Shaft Bearing (L)
46	QW120-01	E-Clip
47	HV002-01	Crank Shaft Retainer
48	QV125-02	Crank Shaft Retainer Screw
49	HV008-01	Crank Shaft
50	ZW112-01	O/S Drive Gear
51	QW083-01	Trip Ratchet
52	QW111-01	Trip Ratchet Washer
53	XV012-01	Drive Gear
54	HV059-01	Drag Disc
55	HV045-01	Drag Key Washer
56	HV036-01	Link
57	HV052-01	One Way Bearing Sleeve
58	HV324-02	Gear Side Cover Assembly
59	BV123-01	Gear Side Cover Screw
60	ZW4114	Drag Click Spring Assembly
61	QW101-01	Tension Knob O-Ring
62	N/A	Tension Knob Bearing
63	QW117-01	Tension Knob Bushing
64	QW032-04	Spool Tension Washer
65	QW082-01	Spool Cushion Washer
66	HV033-01	Spool Tension Knob
67	QW046-02	Spring "D" Washer
68	HV355-01	Star Drag Assembly
69	QW054-01	Handle Washer
70	HV318-01	Handle Assembly
71	RV003-01	Handle Nut
72	RV034-01	Handle Nut Cap
73	QV111-01	Centrifugal Dial Washer
74	HV342-01	Brake Ring Assembly
75	QV070-01	Brake Ring Slider Spring
76	QV076-01	Brake Ring Retainer Screw
77	QW081-01	Spool Tension Collar