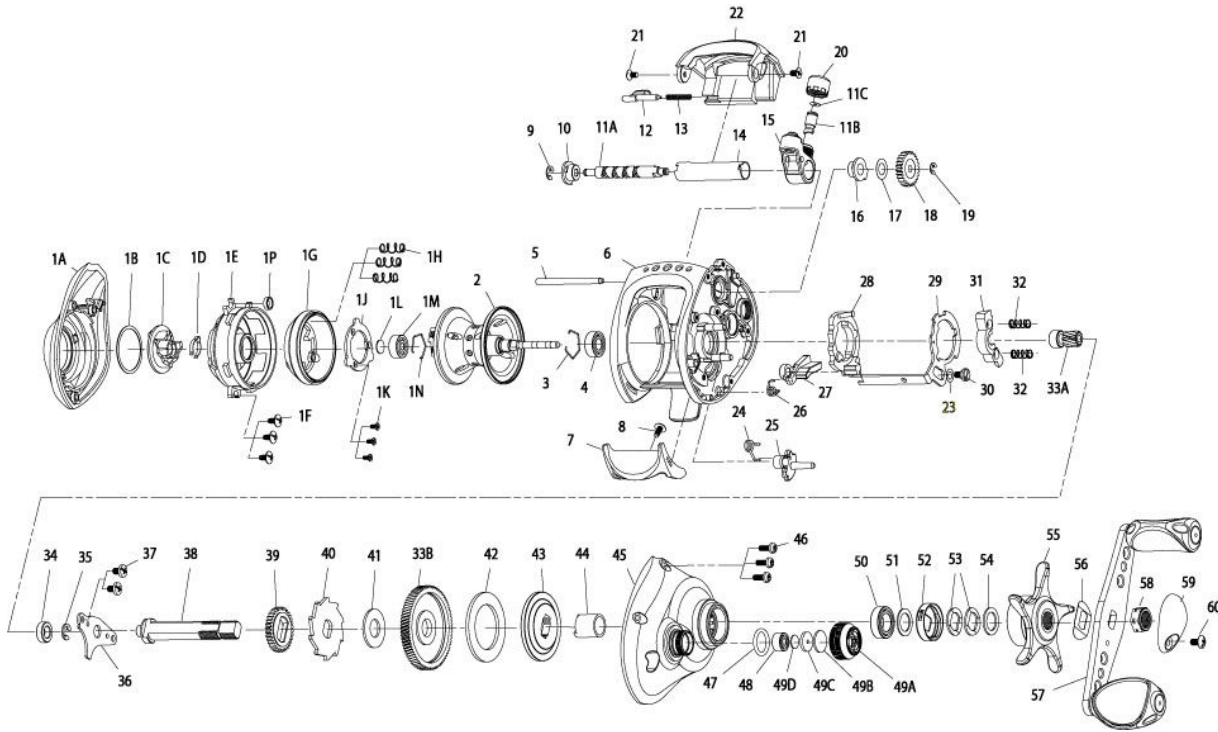


QUANTUM

AC100HPT



Quantum AC100HPT Bait Cast Reel Part List

Key #	Description	Part No.	Key #	Description	Part No.
1	Palm Side Cover Kit includes 1A - Palm Side Cover Assembly 1B - Centrifugal Dial Washer 1C - Centrifugal Dial Assembly 1D - Centrifugal Dial Spring 1E - Spool Cover 1F - Spool Cover Screw 1G - Brake Ring Assembly 1H - Brake Ring Slider Spring 1J - Brake Ring Slider Spring Retainer 1K - Brake Ring Spring Retainer Screw 1L - Spool Tension Shim 1M - Spool Shaft Ball Bearing - Palm 1N - Clip Ring 1P - Collar-Screw	AB4023-01 N/A N/A N/A N/A N/A N/A N/A N/A N/A N/A N/A N/A N/A N/A	26	Kick Lever Spring	GX097-01
2	Spool Assembly	EW321-05	27	Kick Lever	DW077-01
3	Clip Ring	EX080-01	28	Release Slider	AB039-01
4	Spool Shaft Ball Bearing - Gear	EX017-02	29	Release Slider Link	AB036-01
5	Stabilizer Bar - A	DW061-02	30	Release Slider Link Screw	AB125-01
6	Frame	AB001-02	31	Pinion Yoke	AB025-01
7	Thumb Bar	AB009-01	32	Yoke Spring	GX040-01
8	Thumb Bar Screw	CW125-01	33	Gear Kit Includes 33A - Pinion Gear Assembly 33B - Drive Gear	VX4011-01 N/A N/A
9	E-Clip	NX092-01	34	Crank Shaft Ball Bearing -A	SW017-01
10	Bearing Retainer	AB067-01	35	E-Clip	QW120-01
11	Worm Shaft Kit includes 11A - Worm Shaft 11B - Line Guide Pawl 11C - Line Guide Carrier Washer	HV4072-01 N/A N/A N/A	36	Crank Shaft Retainer	DW002-01
12	Side Cover Locking Lever	YX119-02	37	Crank Shaft Retainer Screw	JX107-02
13	Side Cover Locking Lever Spring	ZW096-01	38	Crank Shaft	DW008-03
14	Worm Shaft Guide	DW016-02	39	O/S Drive Gear	DW112-01
15	Line Guide Carrier	DW047-03	40	Trip Ratchet	DW083-02
16	Worm Shaft Bushing - Gear Side	DW068-01	41	Trip Ratchet Washer	QW111-01
17	O/S Pinion Gear Washer	EX035-01	42	Drag Disc	UX059-01
18	O/S Pinion Gear	DW085-01	43	Drag Washer	DW045-01
19	E-Clip	NX090-01	44	One Way Clutch Sleeve	UX052-01
20	Line Guide Carrier Screw	ZW007-02	45	Gear Side Cover Assembly	AB324-02
21	Hood Screw	HX107-02	46	Gear Side Cover Screw	BV123-03
22	Hood	AB027-01	47	Tension Knob O-Ring	QW101-01
23	Link Washer	EX121-01	48	Tension Knob Ball Bearing	SW117-01
24	Release Slider Spring	AB104-01	49	Spool Tension Knob Kit Includes 49A - Spool Tension Knob Assembly 49B - Spool Cushion Washer 49C - Spool Tension Collar 49D - Spool Tension Washer	DW4033-06 N/A N/A N/A N/A
25	Flipping Lever	AB087-01	50	Crank Shaft Ball Bearing -B	TW058-01
			51	Crank Shaft Ball Bearing Washer	ZW032-01
			52	Drag Click Spring Assembly	YX4114-01
			53	Drag "D" Washer	JX046-01
			54	Star Drag Washer	ZW032-01
			55	Star Drag Assembly	YX355-09
			56	Handle Washer	NX054-01
			57	Handle Assembly	AB318-01
			58	Handle Nut	QW003-01
			59	Handle Nut Cap	JX034-04
			60	Handle Nut Cap Screw	QW123-01