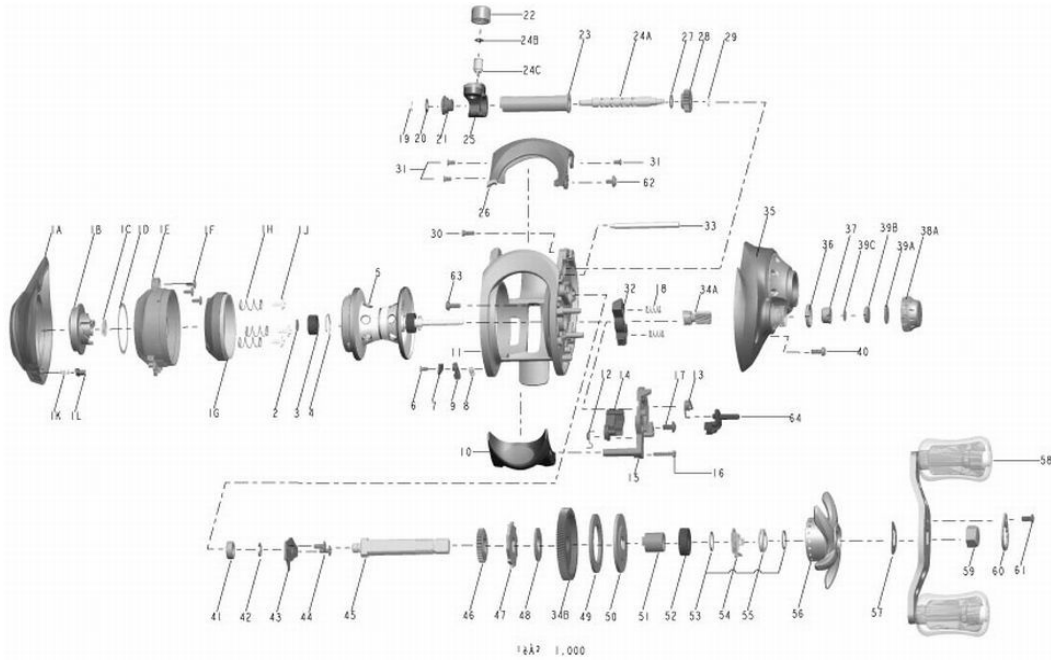




Walleye Grade Baitcast
WCB1060CX

For Parts and Service
Call 1-888-404-1119
www.mikesreelrepair.com



Quantum Walleye Grade WCB1060CX BaitCast Reel Part List

| Key # | Description | Part No. | Key # | Description | Part No. |
|-------|--------------------------------------|-----------|-------|-----------------------------------|-----------|
| 1 | Palm Side Cover Kit | KW4023-04 | 29 | Worm Shaft E-Clip (Gear Side) | NX090-01 |
| 1A | Palm Side Cover Assembly | N/A | 30 | Gear Side Cover Screw "B" | LW123-01 |
| 1B | Cast Control Dial | N/A | 31 | Front Support Screw "A" | KW107-01 |
| 1C | Control Dial Clicker Spring | N/A | 32 | Pinion Yolk | KW025-01 |
| 1D | Control Dial Washer | N/A | 33 | Pillar | KW061-01 |
| 1E | Spool Cover | N/A | 34 | Gear Kit | LW4011-01 |
| 1F | Spool Cover Screw | N/A | 34A | Pinion Gear | N/A |
| 1G | Brake Ring Assembly | N/A | 34B | Drive Gear | N/A |
| 1H | Brake Ring Spring | N/A | 35 | Gear Side Cover Assembly | KW324-08 |
| 1J | Brake Ring Screw | N/A | 36 | Spool Tension Knob O-Ring | QW101-01 |
| 1K | Side Cover Locking Pin Spring | N/A | 37 | Spool Tension Knob Bearing | SW117-01 |
| 1L | Side Cover Locking Pin | N/A | 38 | Spool Tension Knob Kit | KW4033-01 |
| 2 | Spool Shaft Washer (Palm Side) | N/A | 38A | Spool Tension Knob | N/A |
| 3 | Spool Shaft Ball Bearing (Palm Side) | N/A | 39 | Spool Tension Washer Kit | N/A |
| 4 | Bearing Clip Ring | N/A | 39 | Spool Tension Washer Kit | QW4032-01 |
| 2 | Spool Shaft Washer (Palm Side) | QW032-04 | 39A | Spool Cushion Washer | N/A |
| 3 | Spool Shaft Ball Bearing (Palm Side) | QV017-01 | 39B | Spool Tension Collar | N/A |
| 4 | Bearing Clip Ring | HV080-01 | 39C | Spool Tension Washer | N/A |
| 5 | Spool Assembly | DV321-01 | 40 | Gear Side Cover Screw "A" | BV123-01 |
| 6 | Locking Lever Retainer Screw | KW107-01 | 41 | Crank Shaft Bearing (Frame Side) | SW107-01 |
| 7 | Locking Lever Retainer | KW056-01 | 42 | Crank Shaft E-Clip | QW120-01 |
| 8 | Locking Lever Spring | KW096-01 | 43 | Crank Shaft Retainer Plate | KW002-01 |
| 9 | Locking Lever | KW119-01 | 44 | Crank Shaft Retainer Plate Screw | QW125-02 |
| 10 | Thumb Bar Assembly | KW309-01 | 45 | Crank Shaft | KW008-01 |
| 11 | Frame | KW001-06 | 46 | Worm Shaft Drive Gear | ZW112-01 |
| 12 | Kick Lever Spring | KW097-01 | 47 | Trip Ratchet | KW083-01 |
| 13 | Release Slider Spring | MW104-01 | 48 | Trip Ratchet Washer | QW111-01 |
| 14 | Kick Lever | KW077-01 | 49 | Drag Washer | UX059-01 |
| 15 | Release Slider | KW039-01 | 50 | Drag Key Washer | KW045-01 |
| 16 | Thumb Bar Screw | ZW053-01 | 51 | One Way Clutch Sleeve | KW052-01 |
| 17 | Release Slider Screw | KW125-01 | 52 | Crank Shaft Bearing (Handle Side) | TW058-02 |
| 18 | Pinion Yolk Spring | KW040-01 | 53 | Star Drag Washer | KW032-01 |
| 19 | Worm Shaft E-Clip (Palm Side) | NX090-01 | 54 | Star Drag Clicker Spring Assembly | ZW4114-01 |
| 20 | Worm Shaft Washer (Palm Side) | KW038-01 | 55 | Star Drag Spring Washer | JX046-01 |
| 21 | Worm Shaft Bushing | KW067-01 | 56 | Star Drag Assembly | KW355-03 |
| 22 | Line Guide Pawl Screw | KW007-01 | 57 | Handle Spring Washer | QW054-01 |
| 23 | Worm Shaft Guide | KW016-01 | 58 | Handle Assembly | KW318-02 |
| 24 | Worm Shaft Kit | KW4072-01 | 59 | Handle Nut | KW003-01 |
| 24A | Worm Shaft | N/A | 60 | Handle Nut Retainer | KW034-02 |
| 24B | Line Guide Pawl Washer | N/A | 61 | Handle Nut Retainer Screw | KW057-01 |
| 24C | Line Guide Pawl | N/A | 62 | Front Support Screw "B" | QW123-01 |
| 25 | Line Guide Carrier Assembly | KW347-02 | 63 | Gear Side Cover Screw "C" | KW123-01 |
| 26 | Front Support | KW099-02 | 64 | Flippin' Lever | KW087-01 |
| 27 | Worm Shaft Washer (Gear Side) | KW035-01 | 65 | Star Drag Washer "B" | N/A |
| 28 | Worm Shaft Pinion Gear | HV085-01 | | | |